



CATHCART HOUSE

APARTMENT F17



c o r u m

www.corumproperty.co.uk



1 | BEDROOM
1 | BATHROOM
1 | PUBLIC ROOM

Apartment F17 is a spacious, 1 bedroom, south facing apartment, set within the stunning Cathcart House development by leading builders FM Group.

The apartment itself extends to circa 738 sq/ft and features an open plan living kitchen area with large windows allowing plenty of natural light to floor the apartment.

There is a spacious master bedroom, plenty of storage and dedicate utility room, whilst the kitchen's at Cathcart House are individually designed by the award winning supplier Jackton Moore and include integrated appliances.

The bathrooms come with designer sanitary ware and tiling by Porcelanosa. The main bathroom is complete with bath and overhead shower whilst the master en-suite has shower.

You can book an appointment to view the stunning, fully furnished show flat with Corum today by using the contact details.

With completion dates set for this December, you can be moved in by Christmas. Those who purchase their apartment before March 31st will also take advantage of the Scottish Government's cut to LBTT which means you could save up to £880 for Plot F17.

The development itself is a complete re-imagining of the original Victorian Mill, which was subsequently used by Scottish Power. FM Group have transformed the space into luxury 1, 2 and 3 bedroom apartments and 2 and 3 bedroom penthouses.

FM Group are the developers behind some of Glasgow's best established residential developments including The Herald Building, (Merchant City) The Pinnacle (City Centre), Morrison Street (Tradeston) and Skyline Apartments (Finnieston).

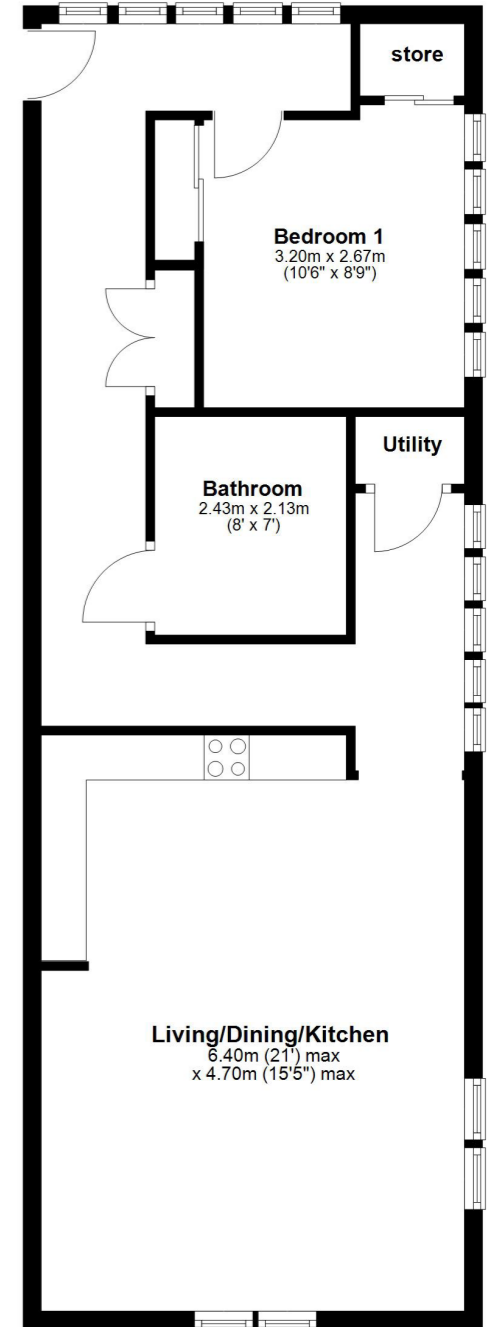


Local Area

Cathcart is a popular suburb located approximately four miles south of Glasgow City Centre. With regular quick and easy links into Glasgow city centre, including Cathcart and Mount Florida stations, this makes Cathcart House an ideal location for the busy commuter.

Glasgow's south side has a broad range of beautifully maintained municipal parks. These include Linn Park and its public golf course, Newlands Park and the Dandelion Café, Maxwell Park, Newlands Lawn Tennis Club, and Pollock Country Park where Pollock House and the world famous Burrell Collection can be found.

Queen's Park is a short distance to the north where nature walks/trails, all-weather football pitches, a glasshouse and a fortnightly farmers market can be found.



Sat Nav: Cathcart House, Glasgow, G44 4GP

* All measurements and distances are approximate Floorplans are for illustration purposes and may not be to scale.



WE'RE **SOLD** ON YOUR FUTURE

Corum Shawlands
247 Kilmarnock Road, Shawlands G41 3JF

Tel: 0141 636 7588

Fax: 0141 636 7589

Email: shawlands@corumproperty.co.uk

www.corumproperty.co.uk

