



# FLAT D 6 GROVE PARK COURT

ST GEORGE'S CROSS

[www.corumproperty.co.uk](http://www.corumproperty.co.uk)







**2 | BEDROOMS**  
**1 | BATHROOM**  
**1 | PUBLIC ROOM**

**Flat D 6 Grovepark Court is a superb, first floor flat in the highly sought after St George's Cross district, close to a wealth of local amenities and transport links.**

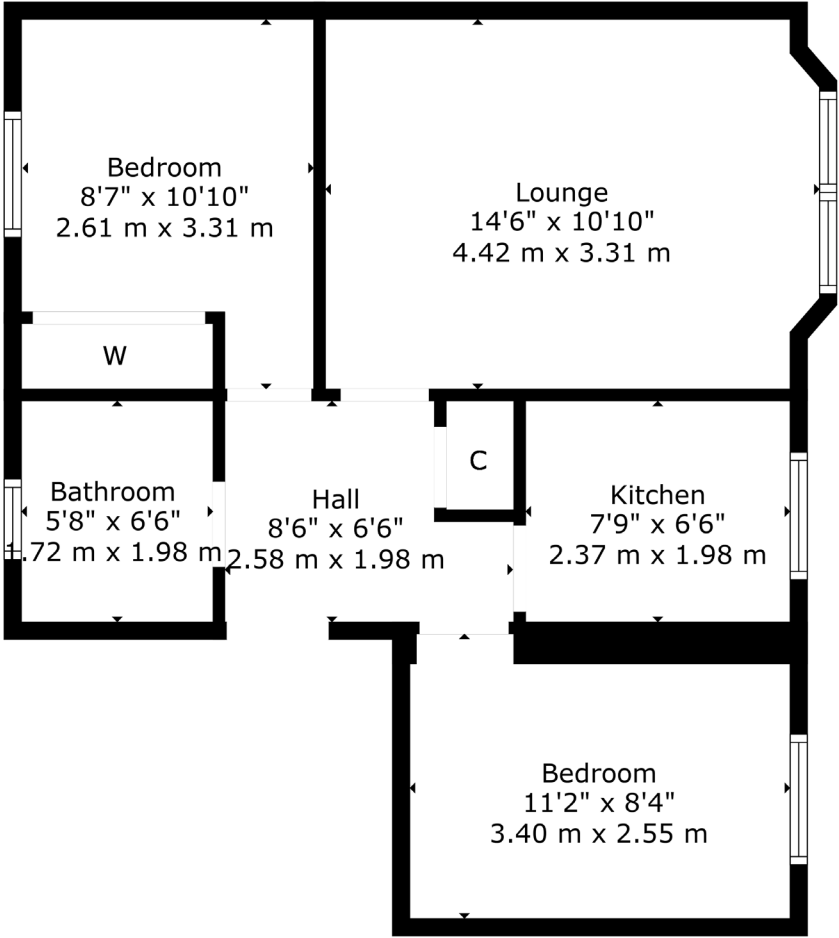
Internally the accommodation comprises; welcoming reception hallway with storage cupboard off and access off to all apartments. There is a good-sized lounge to the front offering open aspects, recently modernised galley style kitchen boasting a range of base and wall mounted units, and two well-proportioned double bedrooms, with the rear bedroom further benefiting from in-built storage. A well-appointed main bathroom with three-piece suite and shower over bath completes the internal accommodation on offer.

The property has secure entry system, newly installed double-glazed windows throughout, electric heating, an allocated, private parking space, and well-maintained communal grounds.









Set in Glasgow's West End, the property is located nearby a wide range of local facilities including bars, cafes and restaurants. For the commuter there is excellent transport services to Glasgow City Centre, with St George's Cross subway a short walk away, and destinations further afield. The M8 motorway network leading throughout the central belt is also close at hand.

**WE5213** | Sat Nav: 6 Grovepark Court, St George's Cross, Glasgow, G20 7DT

For the full home report visit [www.corumproperty.co.uk](http://www.corumproperty.co.uk)

\* All measurements and distances are approximate Floorplans are for illustration purposes and may not be to scale.



WE'RE **SOLD** ON  
YOUR FUTURE



Corum West End  
82 Hyndland Road, Glasgow, G12 9UT

**Tel:** 0141 357 1888

**Email:** [westendenq@corumproperty.co.uk](mailto:westendenq@corumproperty.co.uk)

[www.corumproperty.co.uk](http://www.corumproperty.co.uk)