



88 KELVIN COURT
CLAYTHORNE

www.corumproperty.co.uk





3 | BEDROOMS

1 | BATHROOM

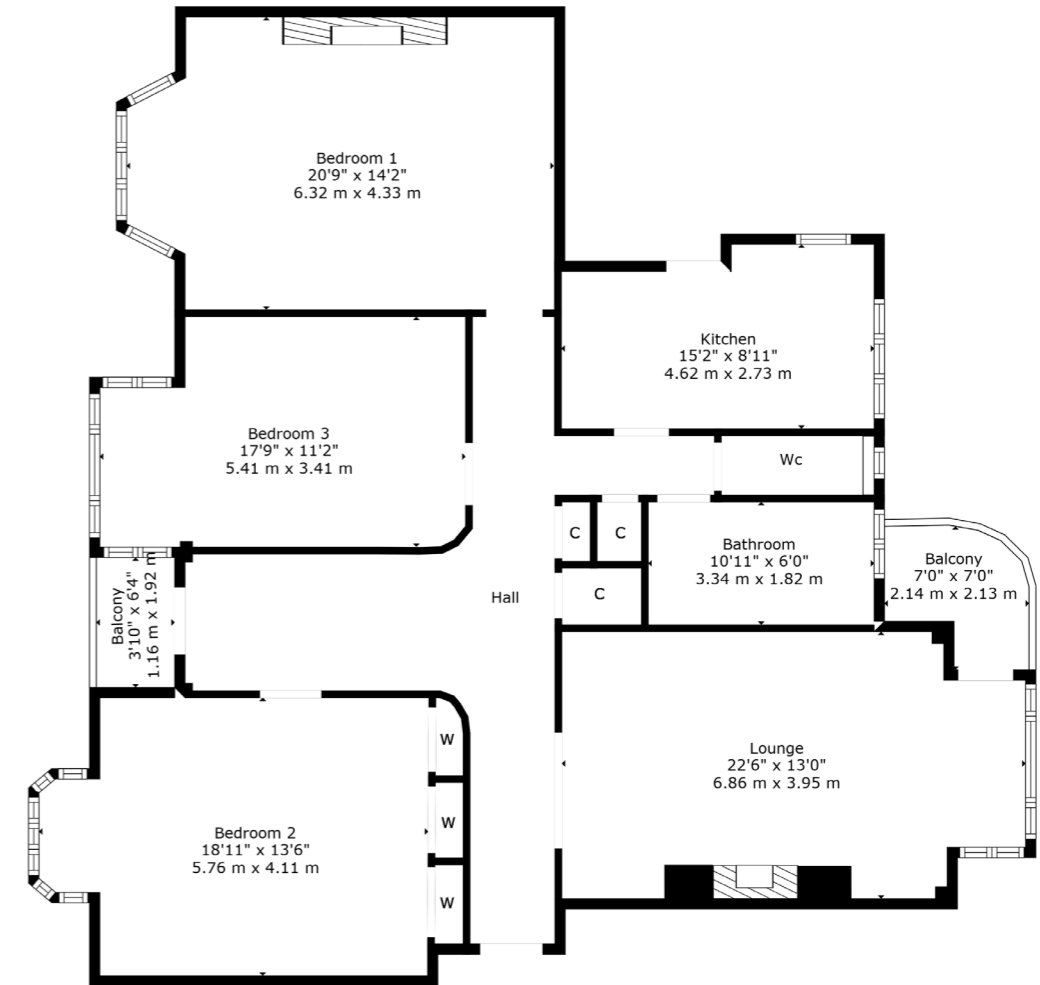
1 | PUBLIC ROOM

88 Kelvin Court is a highly sought after, three-bedroom flat situated in an elegant Art Deco building, designed by J N Fatkin of Newcastle. It was built between 1937 & 1938 and consists of two H plan blocks of luxury flats. The construction of the luxury flats was rare in Glasgow at the time, although the development bears strong similarities to blocks of luxury flats that were built by property speculators in and around London during the 1930's.

On entering the building, a wonderful period communal hallway provides lift and stair access to all levels. The property, which has a private garage, also benefits from balconies to both the front and rear of the property. The generous and stylish internal accommodation has been upgraded and comprises; welcoming reception hall with excellent storage off, a large formal lounge situated to the rear of the property with southernly aspects and balcony off; three large double bedrooms to the front, one of which is currently utilised as a formal sitting room, and the principal bedroom benefits from large fitted wardrobes. There is a stylish kitchen (with back door to rear common stair and maintenance lift), wet room/WC and a stunning, family bathroom with the original vitrolite tiles which are in immaculate condition.

The property benefits from gas central heating, partial double glazing, attractive landscaped residents' gardens, residents' parking and as previously mentioned there is a private garage.





The Claythorne district is located within close proximity to a wide range of excellent amenities and recreational facilities, which can be found at Anniesland, Jordanhill and Hyndland. A fantastic selection of comprehensive and independent schools are located nearby.

There is a railway station at Anniesland and bus services operate on Great Western Road. There are also good road links to the City Centre, M8 motorway and Glasgow International Airport.

The property is well placed for access to a number of major employers, including Glasgow University and several hospitals.

WE5144 | Sat Nav: 88 Kelvin Court, Claythorne, G12 0AH

For the full home report visit www.corumproperty.co.uk

* All measurements and distances are approximate Floorplans are for illustration purposes and may not be to scale.



WE'RE **SOLD** ON
YOUR FUTURE



Corum West End
82 Hyndland Road, Glasgow, G12 9UT

Tel: 0141 357 1888

Email: westendenq@corumproperty.co.uk

www.corumproperty.co.uk