



1/1 15 PARK TERRACE
PARK

www.corumproperty.co.uk





2 | BEDROOMS

2 | BATHROOMS

1 | PUBLIC ROOM

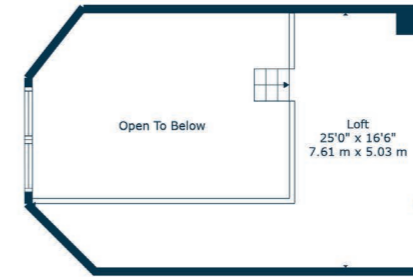
This wonderful, A-Listed blonde sandstone townhouse was designed by Charles Wilson 1855. In 1851, Wilson prepared a master plan for the Park district of Glasgow, the core of which was taken forward as Park Circus, although other parts of his scheme were not adopted. He also assisted Sir Joseph Paxton with the layout for the adjacent Kelvingrove Park directly in front of Park Terrace. In 1921 Lord Maclay and Lady Maclay donated their house at 17 Park Terrace to the University, in memory of their two sons who fell in the First World War. Maclay Hall opened as a hall of residence at the beginning of the session 1922-1923. Originally an all-male residence with a capacity of 34, the Hall expanded with the acquisition of the neighbouring properties. It closed in 1964 for upgrading, and reopened three years later as a self-catering establishment. By 2001, it housed nearly 200 students. In 2004-2005, Maclay Hall was sold for private development and the last students moved out of their rooms in December 2004.

This subsequently led to the development of these luxury apartments from 15-21 Park Terrace that led the way in transforming the Park District into one of Glasgow most exclusive locations to reside. This wonderful, first floor drawing room conversion has spectacular views over the West End and beyond, with the University being one of the main focal points. The building has a well-maintained communal hall and tidy rear garden grounds for all residents. One of the buildings most spectacular features are the original cast iron lift (not functional) and Corinthian pillars. The internal accommodation comprises; welcoming reception hall, stunning original drawing room with kitchen and dining space, two well-proportioned double bedrooms, the primary having an en-suite shower room and both benefiting from fitted wardrobes. The second bedroom also has a very useful mezzanine level which is fantastic for additional storage. Finally, there is a family bathroom off the hall. The kitchen is fully fitted with Smeg appliances, granite worktops and fitted wall units with varnished maple wood doors.

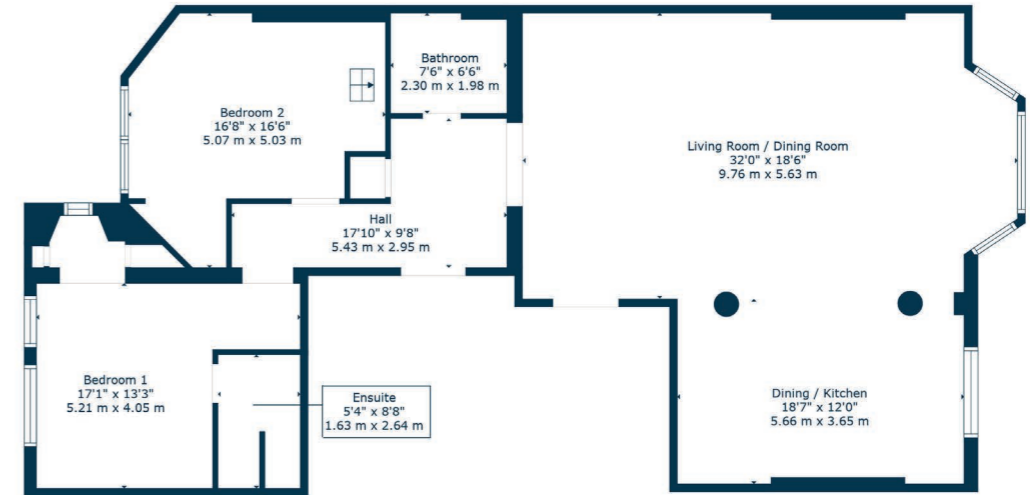
In addition, the property has gas central heating with a Valliant boiler, engineered hardwood flooring, storage cupboard off the hall, breathtaking cornicework and centre features with fitted chandeliers. Residents on street parking is available via request to Glasgow City Council.

VIRTUAL STAGING





Floor 2



Floor 1

Arguably the most sought after and desirable location in Glasgow, is the Park.

The Park District area is bordered by the City Centre, Kelvingrove, Kelvingrove Park and Woodlands. Park Circus was built between 1855 and 1863. Many of the area's large townhouses which were converted to offices during the latter half of the 20th century are being returned to residential use. It was declared a Conservation Area in 1970.

One of the main attributes of the Park area is the accessibility of both the West End's and City Centre's wide range of amenities. Park offers a leafy tranquil surrounding, yet is only minutes from access to the M8 at Charing Cross.

There is excellent local and private schooling in the area and an underground station at Kelvinbridge. It is also an ideal location for those looking to study at Glasgow University.

WE4755 | Sat Nav: 1/1 15 Park Terrace, Park, Glasgow, G3 6BY

For the full home report visit www.corumproperty.co.uk

* All measurements and distances are approximate Floorplans are for illustration purposes and may not be to scale.



WE'RE **SOLD** ON
YOUR FUTURE



Corum West End
82 Hyndland Road, Glasgow, G12 9UT

Tel: 0141 357 1888

Email: westendnq@corumproperty.co.uk

www.corumproperty.co.uk