



**14 MANCHESTER DRIVE**

KELVINDALE

[www.corumproperty.co.uk](http://www.corumproperty.co.uk)



c o r u m





**3 | BEDROOMS**

**1 | BATHROOM**

**2 | PUBLIC ROOMS**

**This stunning family home is situated in a fabulous, elevated position with lovely views over Kelvindale and beyond. The property is beautifully presented and has some wonderful original features including stained glass windows on the half landing of the hallway.**

The accommodation comprises: welcoming reception hall with under stair storage off, lovely bay windowed lounge to the front with beautiful open views, feature fireplace and is open to the spacious dining room to the rear, which overlooks the well-maintained private gardens. Finishing the downstairs accommodation is an excellent extended galley style kitchen which in turn provides direct access out to the rear gardens.

Upstairs, there are two well-proportioned double bedrooms with the principal benefiting from in-built storage, smaller third bedroom to the rear and finally, there is a newly, modernised family bathroom with three-piece suite and shower over bath.

In addition, the property benefits from gas central heating, private front and rear gardens. There is also free on street parking.





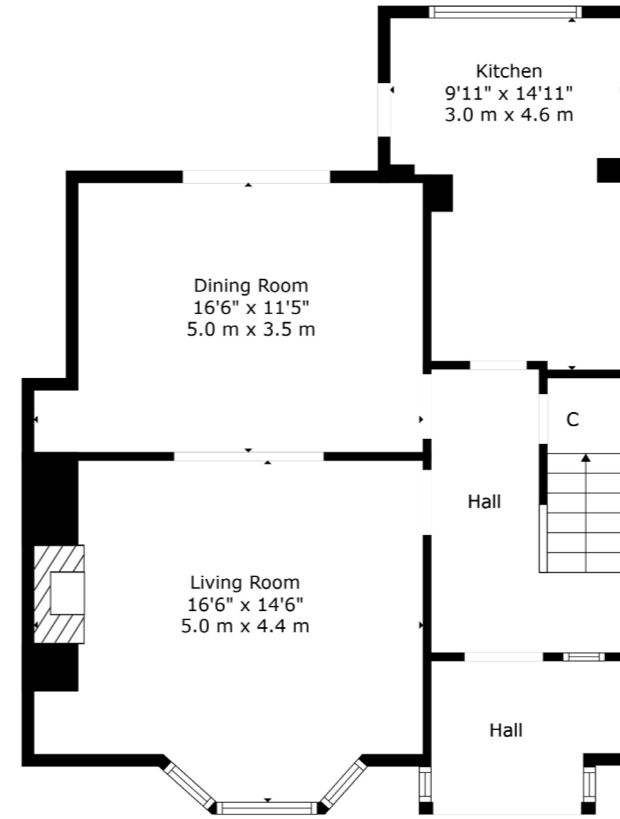
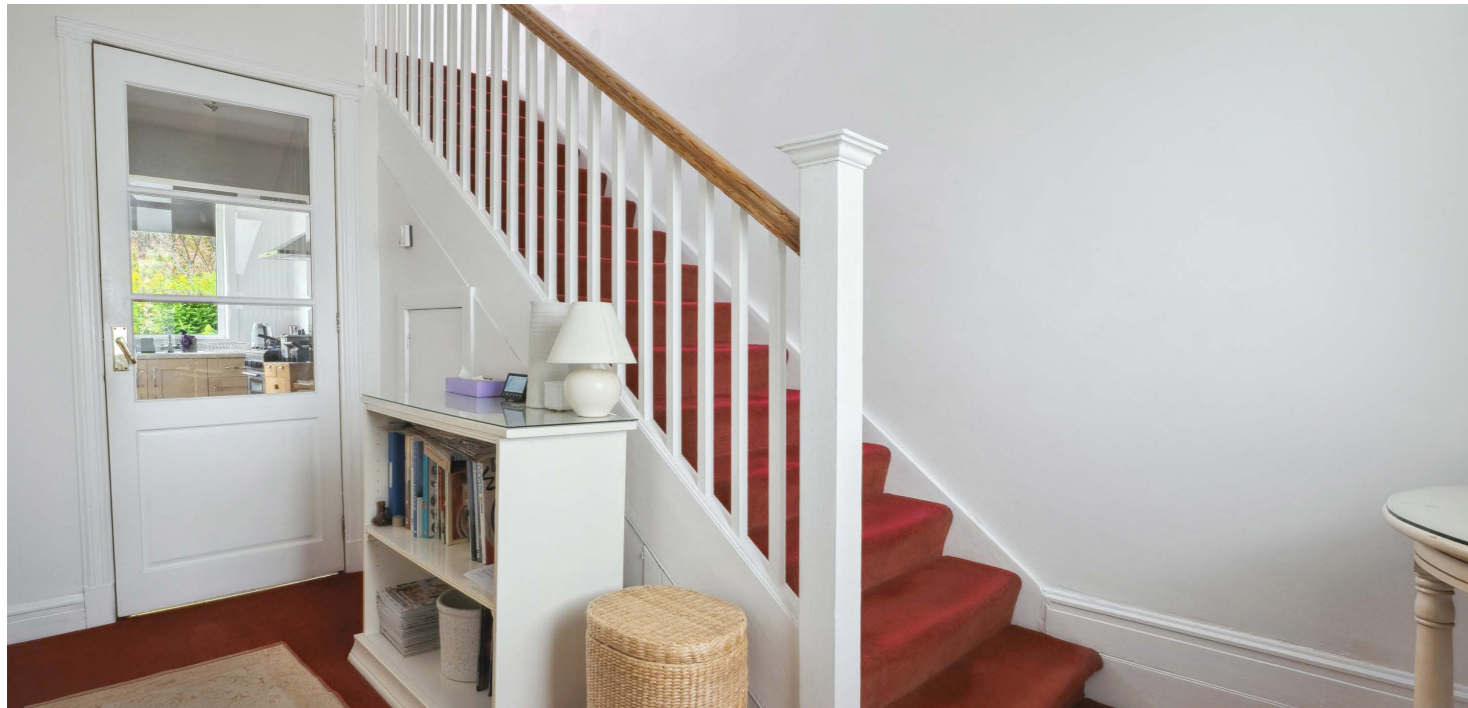




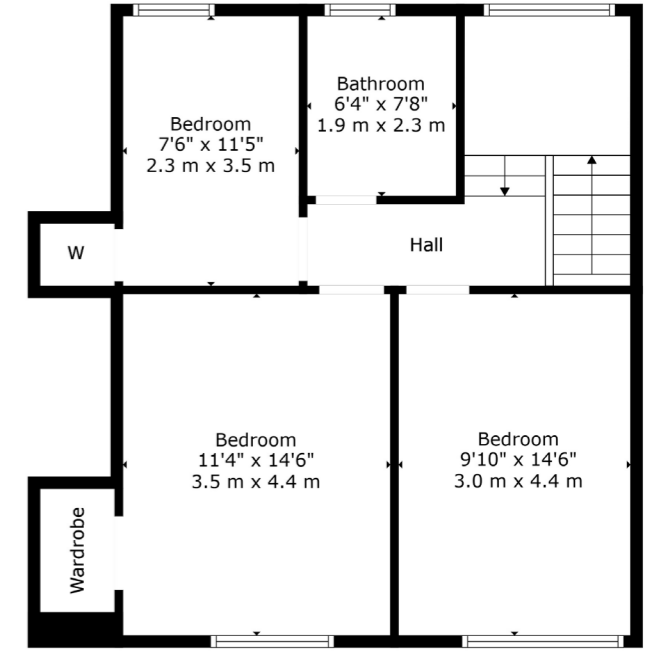








Floor 1



Floor 2



Kelvindale is a popular district in the West End of the city. Kelvindale shares the postcode G12 with the neighbouring districts of: Kelvinside, Hillhead, Hyndland and Dowanhill. The area is characterised by traditional interwar housing, formed of tenements and semi-detached houses, and is extremely popular with young families due to excellent schooling at Kelvindale Primary and Clevedon Secondary School.

Many of the street names in the area are named after places in England. These include Colchester Drive, Beaconsfield Road, Manchester Drive, Leicester Avenue, Northampton Drive, Southampton Drive and Weymouth Drive. A few are also named after Scottish place names, including Grandtully Drive and Fortingall Avenue.

**WE5107** | Sat Nav: 14 Manchester Drive, Kelvindale, G12 0NQ

For the full home report visit [www.corumproperty.co.uk](http://www.corumproperty.co.uk)

\* All measurements and distances are approximate Floorplans are for illustration purposes and may not be to scale.





WE'RE **SOLD** ON  
YOUR FUTURE



Corum West End  
82 Hyndland Road, Glasgow, G12 9UT

**Tel:** 0141 357 1888

**Email:** [westendenq@corumproperty.co.uk](mailto:westendenq@corumproperty.co.uk)

[www.corumproperty.co.uk](http://www.corumproperty.co.uk)