



3/2 219 BYRES ROAD
HILLHEAD

www.corumproperty.co.uk


c o r u m



4 | BEDROOMS

2 | BATHROOMS

1 | PUBLIC ROOM

This superb, spacious top floor flat on Byres Road is perfectly located to enjoy all the area has to offer with some of the best bars, restaurants and amenities on your door step. The beautiful blonde sandstone tenement is accessed via a secure entry system into a well-maintained residents hall and is situated on the corner of Dowanside Road and Byres Road.

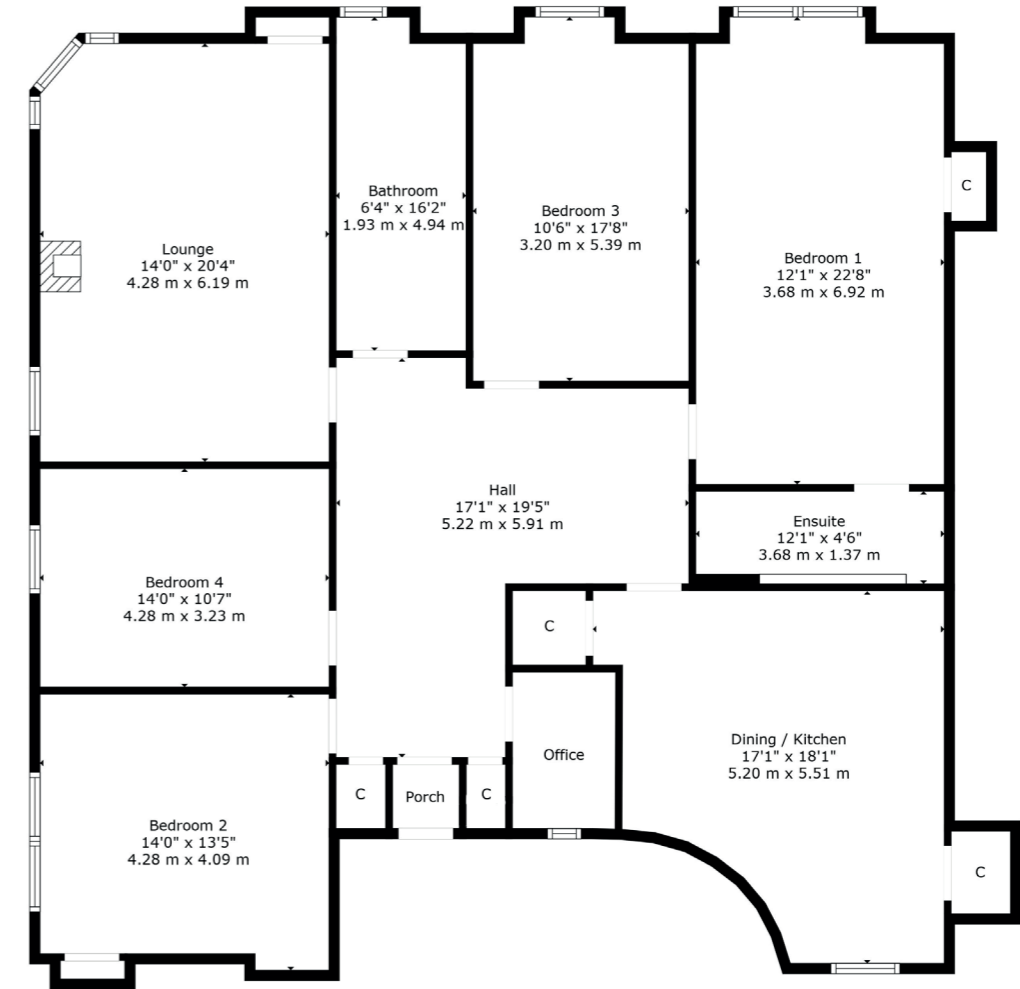
The tenement was built in circa 1876 and has gone through extensive refurbishment in recent years. The apartment, situated on the top floor has a large welcoming reception hall, hardwood flooring, corner bay windowed and dual aspect lounge with some incredible decorative cornice work, stunning feature fire and beautiful open aspects towards the University. There are four well-proportioned double bedrooms, one of which is currently used as a home office/studio and the principal benefits from a stylish, recently installed en-suite shower room. There is a fabulous dining kitchen to the rear with pantry off and the most stunning, sleek and stylish family bathroom with feature bath, and overhead shower.

In addition, the property has gas central heating with a newly installed boiler, partial secondary glazing and excellent additional storage space, which can be utilised as another home office. Residents on street permit parking is also available via Glasgow City Council.









Hillhead is centrally located within the West End, close to Glasgow University. The main street, Byres Road, offers a wide selection of shops, cafés and supermarkets including Tesco Metro, Marks & Spencer and Waitrose. The famous Ashton Lane is situated just off Byres Road offering various bars, restaurants and the Grosvenor Cinema.

The recently refurbished Hillhead Underground on Byres Road provides swift access to Glasgow City Centre and regular bus services operate on Byres Road and Great Western Road. There are also good road links to the motorway network and Glasgow International Airport.

WE5050 | Sat Nav: 219 Byres Road, Hillhead, G12 8UD

For the full home report visit www.corumproperty.co.uk

* All measurements and distances are approximate Floorplans are for illustration purposes and may not be to scale.





WE'RE **SOLD** ON
YOUR FUTURE



Corum West End
82 Hyndland Road, Glasgow, G12 9UT

Tel: 0141 357 1888

Email: westendnq@corumproperty.co.uk

www.corumproperty.co.uk