



Marley South







Marley South

South Brent, Devon, TQ10 9JX

Totnes 6.3 miles | Plymouth 18.3 miles | Exeter 28.3 miles

A substantial part of a stunning Grade 2* listed Georgian manor house with a private garden, garaging, use of communal grounds and an 8 acre private paddock

- Extensive accommodation over three floors
- Stunning principle reception rooms
- 6 bedrooms, 2 bathrooms, 2 shower rooms
- Large kitchen/breakfast room
- Abundance of Georgian architectural features
- 8 acre private paddock
- Garaging for 3 cars
- Leasehold sale
- Council Tax Band G

Guide Price £1,190,000

Stags Totnes

The Granary, Coronation Road, Totnes, Devon, TQ9 5GN

01803 865454 | totnes@stags.co.uk

The London Office

40 St James's Place, London, SW1A 1NS

020 7839 0888 | enquiries@tlo.co.uk



SITUATION

The property is situated within the parish of Rattery, Rattery being one of Devons oldest villages and situated on the old travellers road from Kingsbridge to Bristol. The property is set within the beautiful Marley estate enjoying a gated entrance opening to 11 acres of beautiful parkland with wooded walks including a tennis court.

The nearby village of South Brent has a wide range of local shops and amenities including a health centre, dental surgery, fantastic primary school, three churches and two public houses. Secondary education can be found in the nearby towns of Ivybridge, Totnes and Ashburton and school buses to all 3 destinations pick up Marley entrance.

The bustling Medieval market town of Totnes is approximately 6 miles away and has a wider range of facilities which include a secondary school, a leisure centre/swimming pool, a unique High Street with many individual shops and boating opportunities on the River Dart

DESCRIPTION

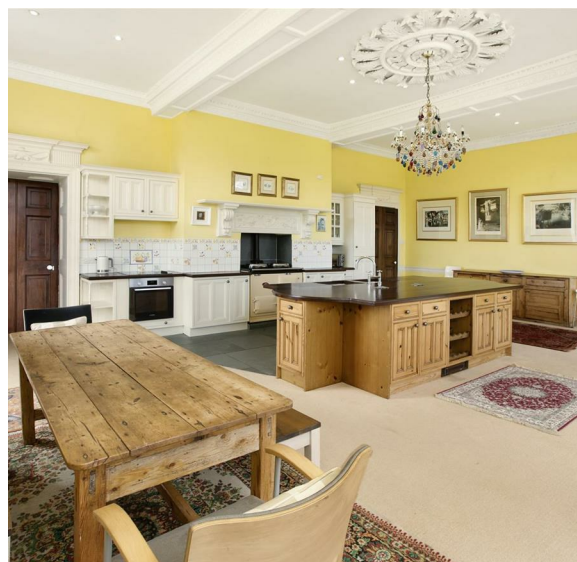
Marley South is a superb principle wing of Marley House, which was converted in the mid-1990s to create two large houses and a number of apartments. Marley South enjoys some of the original stunning reception rooms with glorious southerly and easterly views over the extensive grounds. The property retains much of the Georgian architecture with large floor to ceiling sash windows with working shutters, large fireplaces with marble surrounds, ornate detail around the door frames and beautiful friezes on the ceilings.

The original property on the Marley Estate once dated back to the mid-1500s until 1711, when the original house was partially demolished and subsequently rebuilt in the 18th and 19th centuries. For most of the 20th century a community of Bridgettine nuns occupied the property before being converted in the 1990s into two large houses and a number of apartments. The Estate has a large area of communal grounds, including a hard tennis court, parkland and a lake, which is available for use by all of the residents of the 17 dwellings, which form a private community at Marley House.

At the entrance to the Estate, there is a electronically controlled gate providing privacy and good levels of security. The long sweeping tarmacadam entrance drive leads to main house, passing the garage blocks on the left handside. The drive eventually passes the front of Marley South and the impressive entrance steps to the private parking area to the side of the property. Marley South has three dedicated private spaces.

The property is accessed up an impressive flight of steps, which lead up to the terrace in front of the entrance doors to Marley South. Inside the entrance hall there is a door to a WC and a door which leads into a fantastic open plan kitchen/breakfast/snug. All the rooms in the house enjoy generous ceiling heights with the kitchen enjoys three floor to ceiling sash windows with working shutters and a pair of doors which lead to the private area of terrace running around the eastern and southern elevations. The kitchen has a large island with seating to either side, incorporating two Belfast sinks, space and plumbing for a full sized dishwasher, integrated fridge/freezer and a fine mantelpiece over the oil-fired Aga.

There is an additional electric fan assisted oven with hob over. From the kitchen there are two doors, one to the staircase hall and one into the stunning drawing room/dining room with three large sash windows, a working fire with an ornate wooden surround, superb ceiling rose with chandelier. This room would have been one of the major reception rooms when the house was one dwelling.





In the staircase hall there is a pair of doors to a built in safe, a cupboard which houses the underfloor heating manifolds and a pair of double doors to the staircase. Underneath the staircase there is a small utility room with plumbing for a washing machine and tumble drier.

On the first floor there is a door to a WC and a door through to the sitting room, again with stunning plasterwork and tall ceiling heights with two large sash windows, all with working shutters. There is a cast iron fireplace with a marble surround and a number of built-in bookcases with storage under.

A door leads into a further room, currently used as a study/additional bedroom with a cast iron fireplace and marble surround. Both of these rooms enjoy rural views to the south over the private area of garden and to the eight acre paddock. At the far end of the landing is the stunning main bedroom with three large sash windows, working shutters, with views to the east and the south.

There is a stone fireplace with working fire and door to a wardrobe and door to an en-suite bathroom with an enamel bath and a large walk-in shower.

Bedroom 2 (double) is also located at this end of the house with a large window overlooking the stone steps to the property and over the communal area of grounds to the east.

The stairs rise to the second floor where there are an additional four double bedrooms and a family bathroom. Two of the bedrooms are en-suite, one with a bathroom and the other with a shower room. There is plenty of storage with built-in cupboards into the eaves.

GARDENS AND GROUNDS

Marley South owns the level rectangular section of level lawn, immediately in front of the property and a large area of garden to the south, accessed from the car parking area. There is a covered storage area adjoining this area of garden. All the properties on the estate have the benefit of the communal area of parkland and tennis court, with pockets of woodland and a lake which are all enjoyed with views particularly from the kitchen and the master bedroom.

The eight acre paddock lies to the south beyond the car parking area and accessed from a pair of gates next to the parking area. The field is let to a local farmer for sheep grazing. The triple garages are located in a block on the left-hand side of the entrance drive and have light and power connected.

SERVICES

Marley South benefits from a private shared water supply and a shared sewage treatment plant, all of which is paid for by the contribution to the Marley Estate Management Company.

Mains electricity and oil-fired central heating. The drawing room on the ground floor benefits from oil-fired underfloor heating with radiators in the kitchen and on the first and second floors. The boiler is located underneath the property in a boiler room.

According to Ofcom, good mobile coverage and standard broadband is available. However, Airband supply the property with around 35mps download speeds.

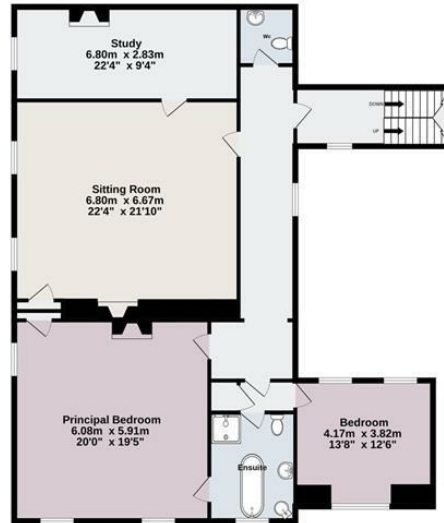
TENURE

The property is offered for sale leasehold on a 999 year lease, expiring in June 2995. The Service Charge amounts to £5,000 per year. Please note, the lease restricts holiday lets, however, long term lets are permitted.

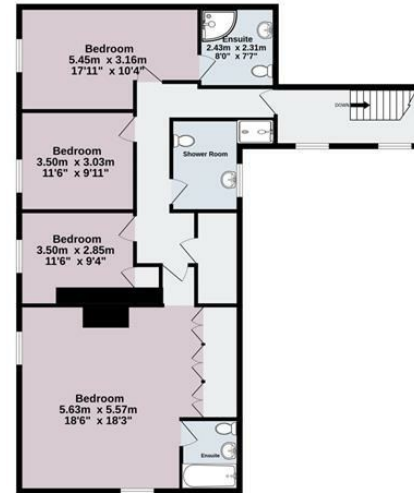
Ground Floor
153.9 sq.m. (1657 sq.ft.) approx.



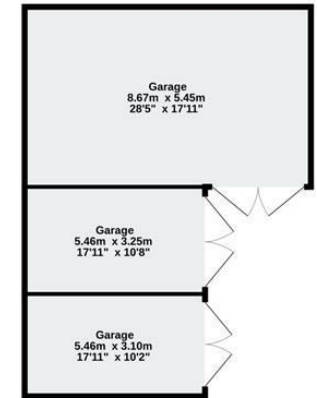
1st Floor
151.5 sq.m. (1630 sq.ft.) approx.



2nd Floor
108.4 sq.m. (1167 sq.ft.) approx.



Garages
81.9 sq.m. (882 sq.ft.) approx.



TOTAL FLOOR AREA : 495.7 sq.m. (5336 sq.ft.) approx.

Whilst every attempt has been made to ensure the accuracy of the floorplan contained here, measurements of doors, windows, rooms and any other items are approximate and no responsibility is taken for any error, omission or mis-statement. This plan is for illustrative purposes only and should be used as such by any prospective purchaser. The services, systems and appliances shown have not been tested and no guarantee as to their operability or efficiency can be given.
Made with Metropix ©2023



IMPORTANT: Stags gives notice that: 1. These particulars are a general guide to the description of the property and are not to be relied upon for any purpose. 2. These particulars do not constitute part of an offer or contract. 3. We have not carried out a structural survey and the services, appliances and fittings have not been tested or assessed. Purchasers must satisfy themselves. 4. All photographs, measurements, floorplans and distances referred to are given as a guide only. 5. It should not be assumed that the property has all necessary planning, building regulation or other consents. 6. Whilst we have tried to describe the property as accurately as possible, if there is anything you have particular concerns over or sensitivities to, or would like further information about, please ask prior to arranging a viewing.

Energy Efficiency Rating		
	Current	Potential
Very energy efficient - lower running costs		
(92 plus) A		
(81-91) B		
(69-80) C		
(55-68) D		58
(39-54) E	33	
(21-38) F		
(1-20) G		
Not energy efficient - higher running costs		
England & Wales	EU Directive 2002/91/EC	



