



Clifton Lodge, Jubilee Road







Clifton Lodge, Jubilee Road

Totnes, Devon, TQ9 5BP

A38: 5 miles, Plymouth: 24 miles, Exeter: 29 miles

A superb detached Georgian house on the prestigious Jubilee Road in Totnes, with far-reaching views and offered to the market for the first time in 30 years

- A substantial, handsome property of 2,550ft²
- Much sought after character with high ceiling heights, working shutters and sash windows
- 2 Elegant reception rooms
- Large kitchen/breakfast room, utility room
- 5 Double bedrooms
- Family bathroom and en-suite shower room
- Potential to create an annexe to the house
- Stunning far-reaching views
- Gardens surrounding the house
- Freehold sale. Council Tax Band G

Guide Price £1,250,000

Stags Totnes

The Granary, Coronation Road, Totnes, Devon, TQ9 5GN
01803 865454 | totnes@stags.co.uk

The London Office

40 St James's Place, London, SW1A 1NS
020 7839 0888 | enquiries@tlo.co.uk



@StagsProperty

SITUATION

Clifton Lodge is located in the highly sought after Jubilee Road of Totnes, a bustling Elizabethan market town full of interest with a wide range of good local schools, shopping facilities and recreational pursuits including indoor swimming pool and boating opportunities on the River Dart. The A38 Devon expressway is approximately 6 miles away, allowing speedy access to the cities of Exeter and Plymouth and the country beyond. Main line rail links to London Paddington are also located in Totnes. The property is situated within easy walking distance of shops, cafes, restaurants and the River Dart.

DESCRIPTION

Clifton Lodge is a fantastic detached period property, believed to have been built in the 1860s and whilst benefitting from both Victorian and Georgian architecture with large sash windows, the property remains unlisted. Clifton Lodge is in the Conservation Area of Totnes and has been enjoyed by the vendor for 30 years. The property contains timber casement windows with rendered elevations under a slate roof and has the ability to potentially be split to create an annexe to the house, utilising an external staircase which leads up to the first floor on the north eastern elevation of the house

ACCOMMODATION

The gravel path leading up from Jubilee Road bisects part of the garden and leads up to the south eastern elevation of the house. Access to the property is either from a door which leads into the kitchen/breakfast room or from a door through the conservatory, which has a terracotta tiled floor and in need of refurbishment.

From the conservatory, a part glazed door leads into the central hall of the house, with the original turning staircase rising past the large feature full length window to the first floor landing. Door to under-stairs storage cupboards. From the hall are doors to two reception rooms, the sitting room has a marble fireplace with cast iron inset hearth, which has a gas-fired wood burning effect stove with storage either side of the fireplace. There is a large floor to ceiling sash window with working shutters either side with a pleasant view of the garden to the southwest. All the rooms in the house have tall ceiling heights with ornate corning and deep skirting boards.

The second reception room, formerly the dining room, has a marble fireplace with cast iron inset with a matching floor to ceiling window with sash window and working shutters, again, facing the garden to the southwest. Both the hall and these two reception rooms have the original pine floorboards.

On the opposite side of the hall there is a door which leads into the kitchen/breakfast room, with a laminate floor throughout, with two doorways, one into the breakfast end and one to the kitchen. The kitchen has a bespoke range of base kitchen units with a central island unit with a timber worktop incorporating a Neff single fan assisted oven and a 5-ring gas burner hob over. Within the original chimney is the gas-fired Ranger Rayburn for cooking, central heating and hot water. Within the kitchen is a fine pine dresser, which will remain with the property.

There is a pair of French windows leading to the north western side of the garden and a sash window with working shutters and a further timber and glazed door leading out to the front paved area to the southeast. From the kitchen, a door leads through to the utility room, with a further range of base and eye-level kitchen units with a sink and space and plumbing for a washing machine and tumble dryer. This room is large enough to incorporate fridge/freezers, a space for storing coats and boots, with a door leading to the side of the property and a door to the airing cupboard where the hot water tank is located. Door to a ground floor WC.

UPSTAIRS

From the hall, the staircase rises to the spacious first floor landing with doors to four double bedrooms. Bedroom 1, with a cast iron fireplace with timber surround, a built-in wardrobe and attractive curved sash windows overlooking Totnes and across to Baltic Wharf and Sharpham.





Bedroom 2 also has a cast iron fireplace with the same window overlooking Totnes to the southwest. Family bathroom with a large enamel bath with electric shower attachment over. Bedroom 3 (double), with a sash window facing southeast, with a view down the garden and over Totnes, also with a fireplace, which has been blocked, with a door leading through to bedroom 5/nursery/dressing room, which has a door out to a porch with a further door and a flight of steps down to the garden. From bedroom 5/nursery, there is an ensuite shower room with double sinks and a large walk-in shower. From the main hall, door to bedroom 4 (double) with a sash window facing northwest and a built-in cupboard.

GARDENS AND GROUNDS

Clifton Lodge benefits from an area of level and gently sloping lawns, which wraps around the entire property, with a good sized area of level garden to the southwest of the house bordered by a mature hedge, with a low stone wall providing various planted borders.

To the northern side of the house the garden slopes upwards to a further level area, which can be accessed from the pair of French windows from the kitchen. To the north east there is a small stone and brick-faced building under a tin roof, divided into two areas, one used as a potting shed and the other as a former gardener's loo. A stone wall keeps the bank away from the property, allowing access round to brick paved patio at the front of the house.

The upper area of garden to the northeast of the property contains two fruit trees and a laurel hedge denoting the boundary between the neighbouring property. At this end of the house there is an external flight of stairs which leads through a shingle-clad porch into bedroom 5/nursery, which could be utilised to create a separate annexe to the house.

A gateway at the upper end provides access to a pathway leading to a composting area on the upper area of garden at the top side of the entrance path to the property. One of the particular selling features are the fantastic views to the east, south and west of the property.

There is a single garage built into the bank and accessed from Jubilee Road, which the vendors believe once had a pathway leading up to the front of the house, but is no longer in use. Parking to the property is along Jubilee Road and whilst it could, in theory be possible to bring in a drive to the property, buyers will accept that parking is on the road and access to the property is on foot.

SERVICES

All mains services are connected with gas central heating. Broadband speed up to Ultrafast is available with good mobile coverage.

VIEWINGS

Strictly by prior appointment with Stags Totnes office Tel: 01803 865454

LOCAL AUTHORITY

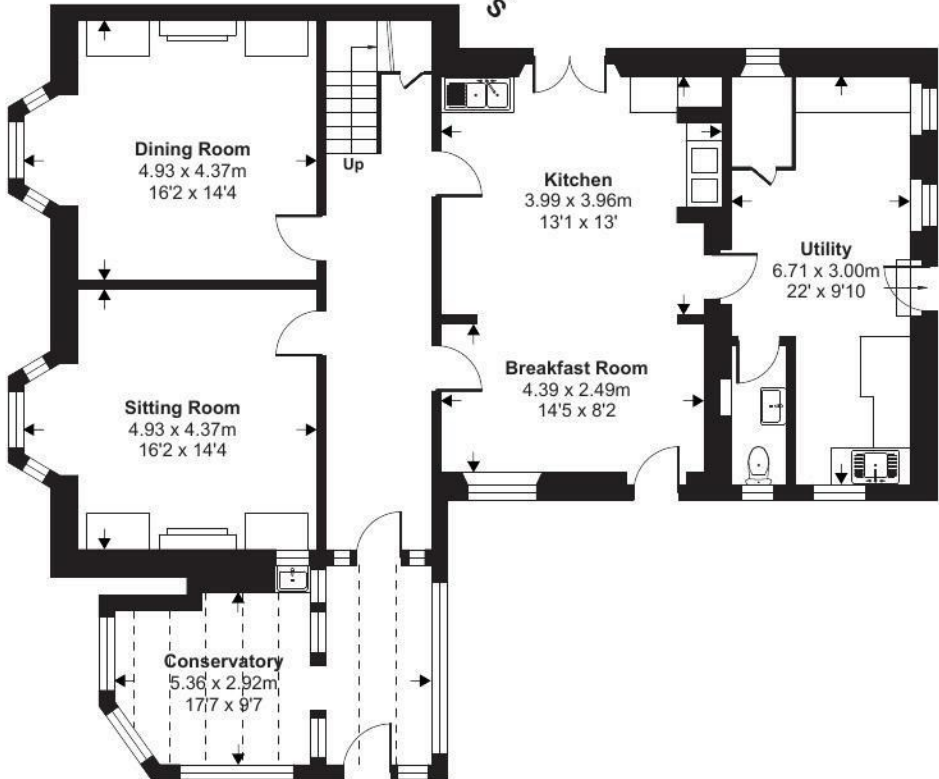
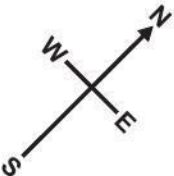
South Hams District Council

DIRECTIONS

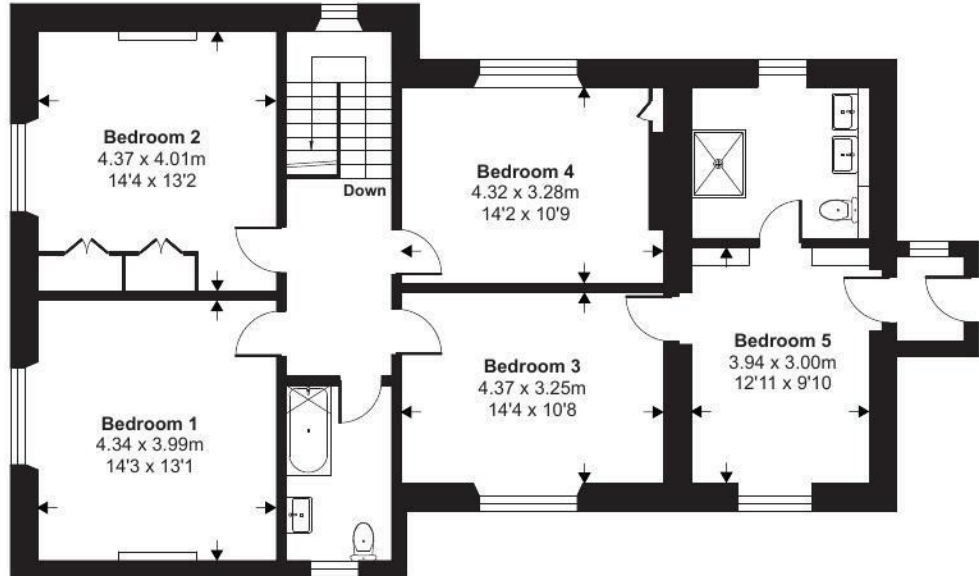
From Totnes proceed up the hill on the A385 to Paignton, taking the left-hand turn in Bourton Road, which is at the lower end of Jubilee Road. Proceed along Bourton Road and turn right up Jubilee Road and park about 100 yards passed the property named Hembury, where you will see the pedestrian gate for Clifton Lodge. Park in the road and walk through the pedestrian gateway up the path to the front of Clifton Lodge.

Approximate Area = 2551 sq ft / 236.9 sq m

For identification only - Not to scale



Ground Floor



First Floor



Floor plan produced in accordance with RICS Property Measurement Standards incorporating International Property Measurement Standards (IPMS2 Residential). ©nichecom 2024. Produced for Stags. REF: 1097528



Stags Totnes

The Granary, Coronation Road, Totnes, Devon, TQ9 5GN

01803 865454 | totnes@stags.co.uk

Energy Efficiency Rating		Current	Potential
Very energy efficient - lower running costs			
(92 plus) A			
(81-91) B			
(69-80) C			
(55-68) D			
(39-54) E			
(21-38) F		34	
(1-20) G			
Not energy efficient - higher running costs			
England & Wales		EU Directive 2002/91/EC	



