



Tregrill Farm

Tregrill Farm, Menheniot, Liskeard, PL14 3PL



Liskeard 3 miles Looe (South Cornish Coast) –. 8 miles Plymouth - 18 miles

A charming rural retreat near Menheniot, Tregrill Farm offers a seven-bedroom period farmhouse, four holiday cottages, plus a one bedroom annexe and a range of outbuildings with development potential, all set in peaceful grounds just minutes from the A38, Liskeard, and the Cornish coast. An ideal home-and-income opportunity with scope to grow.

- 7-Bedroom Farmhouse
- 2 Barns with Potential to Develop (Subject to Planning Consent)
- Games Room with Laundry & Store
- 4 Holiday Cottages
- Pool
- One Bedroom Annexe
- Studio
- Freehold

Guide Price
£1,250,000

Situation
Tregrill Farm is located in a peaceful rural setting on the edge of the sought-after village of Menheniot, in southeast Cornwall. The property enjoys a tranquil countryside position with far-reaching views, yet remains highly accessible - just a short drive from the A38, providing excellent road links to Plymouth, Liskeard, and the wider Cornish and Devonshire coasts. The village of Menheniot offers everyday essentials, including a well-regarded primary school, village shop, and pub, while the nearby market town of Liskeard provides a broader range of amenities, supermarkets, schools, and a mainline railway station with direct services to London Paddington. The beautiful south Cornish coastline lies just six miles away, offering sandy beaches, cliff walks, and popular destinations such as Looe, Polperro, and Whitsand Bay. For nature lovers, Bodmin Moor and Dartmoor National Park are both within easy reach, providing superb walking, riding, and outdoor pursuits. Combining rural charm with excellent transport connectivity, Tregrill Farm is ideally situated for those seeking a tranquil lifestyle with income potential in one of Cornwall's most accessible and picturesque regions.

Main Farmhouse
The main residence at Tregrill Farm is a well presented seven-bedroom farmhouse dating back to the 1820s, offering generous and versatile accommodation full of character and original period features. Sympathetically maintained by the current owners, the house blends traditional charm with modern comfort, featuring double-glazed sash windows, wooden shutters, feature fireplaces, and slate and tiled flooring. Set behind a private driveway with ample parking, from the driveway you can access storage which lies under the sunroom, the home is approached via a large entrance porch leading to a bright farmhouse kitchen and adjoining utility room, perfect for a busy family or lifestyle business. There are two spacious reception rooms, one semi-divided and flowing into a sunny conservatory with views over the garden. A rear porch gives access to the courtyard and outbuildings, while a cellar below the front reception room serves as useful workshop and storage space. Upstairs, the first-floor houses five double bedrooms, including a luxurious principal suite with en suite bathroom, dressing room, and far-reaching countryside views. A family bathroom and home office complete this level. The second-floor features two further large bedrooms set into the eaves, one currently used for storage. Adjoining the farmhouse is 'The Nook', a charming one-bedroom annexe with its own entrance and features a wet room. Bright and full of character, it offers flexible use as a multi generational living space or as a further holiday let. The Nook can be accessed from the house or from the main entrance.

New England
New England is a charming Old Colonial-style cottage with reverse-level accommodation and abundant character. Downstairs features three bedrooms, including a principal room with ensuite shower, along with a family bathroom and separate WC. Upstairs, the bright open-plan living space is enhanced by vaulted beamed ceilings, Velux windows, and a cosy log burner. The kitchen/dining area includes reclaimed timber, stone worktops, and a stained-glass window, blending rustic warmth with distinctive design.

Provence
Provence evokes the charm of a French farmhouse, with colour-washed walls, exposed beams, and wooden shutters. This reverse-level cottage features three bedrooms, a bathroom, and WC on the ground floor, leading upstairs to a spacious living room with countryside views and a log-burning stove. A few steps lead to a large, split-level farmhouse-style kitchen/dining room with vaulted ceilings, oak flooring, and exposed stonework. Outside, guests can enjoy a private patio seating area just across the communal path.

Moderno
Moderno is a sleek, contemporary holiday cottage with reverse-level accommodation and stylish finishes in glass, stainless steel, and aluminium. The ground floor features two ensuite bedrooms, while upstairs offers a bright, open-plan living space with vaulted beamed ceilings, original alcoves, and a striking hexagonal log burner on a slate hearth. A glass balustrade staircase and clever layout create a modern yet characterful atmosphere—perfect for couples or small families seeking a stylish countryside escape.

Deco
Deco, this one-bedroom cottage has a 1920s feel throughout. The living room/dining room has a woodburning stove in a stylised surround and a large feature window. Leading off this area is a well-equipped kitchen. The ground floor bedroom overlooks the gardens and has an en-suite bathroom, perfect for a hot soak after a long walk. Upstairs in the eaves space is a second bedroom, perfect as a twin room for children, with sink and shower cubicle around the corner. Outside is a private paved area.

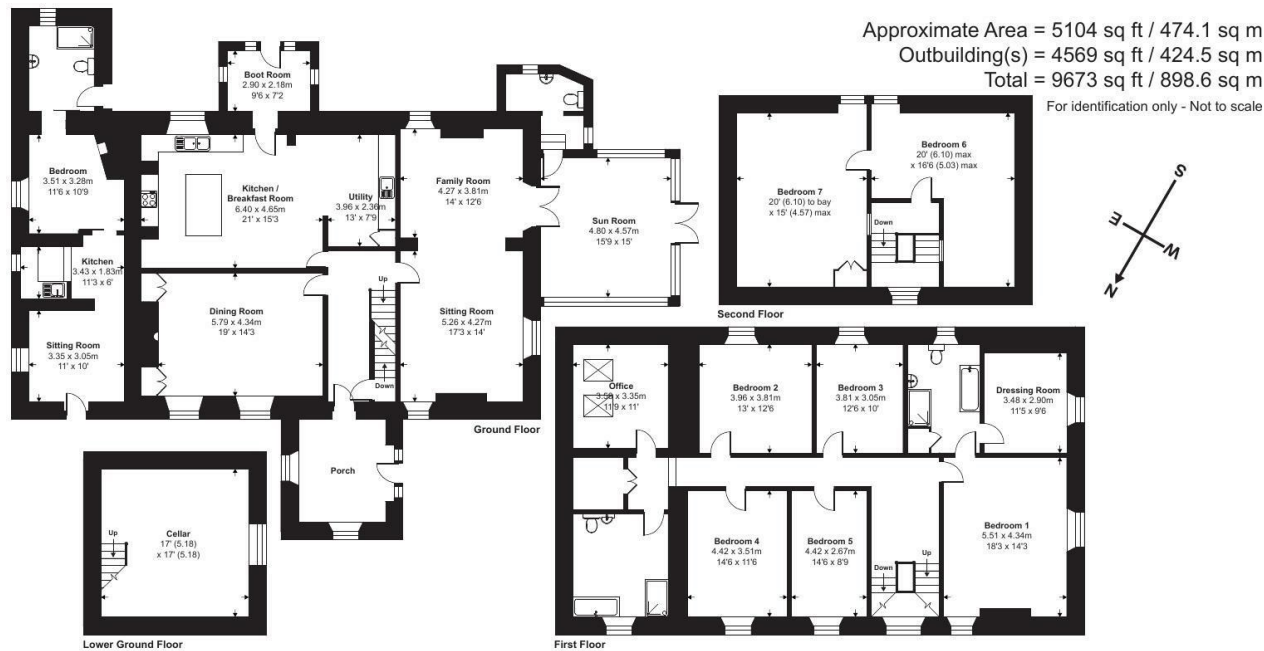
Pool & Summer House
Behind a private gate lies a secluded garden—currently the private outdoor space for the farmhouse, featuring a heated outdoor swimming pool (approximately 10m x 5m). The pool is not currently operational and would require some work to be brought back into use. Surrounded by a patio terrace, the area also includes a charming hexagonal summer house with WC, water, power, and lighting, ideal as a changing room or peaceful retreat, as well as a built-in brick BBQ and bar area, perfect for outdoor entertaining.

Laundry/Store & Games Room
This versatile two-storey barn currently serves the holiday lets, with the lower level used as a store, office, and laundry area, fully equipped with shelving, plumbing for washing machines and tumble dryers, and a WC. The upper level is a spacious games room, featuring an antique snooker table, table tennis, and dart board, providing a popular recreational space for guests. The building also offers potential for residential conversion, subject to the necessary planning permissions.

The Studio
An attractive two-storey barn currently used for storage and workshop space, The Studio features exposed wooden beams, a full-height ceiling, and Velux windows providing ample natural light. A mezzanine floor, accessed via a spiral staircase, adds further flexibility. With its character and layout, the building offers excellent potential for conversion into residential accommodation, subject to the necessary planning consent.

Hector's Barn
Hector's Barn is a characterful L-shaped barn, reputed to





Floor plan produced in accordance with RICS Property Measurement 2nd Edition, Incorporating International Property Measurement Standards (IPMS2 Residential). © nchecom 2025. Produced for Stags. REF: 1320180

IMPORTANT: Stags gives notice that: 1. These particulars are a general guide to the description of the property and are not to be relied upon for any purpose. 2. These particulars do not constitute part of an offer or contract. 3. We have not carried out a structural survey and the services, appliances and fittings have not been tested or assessed. Purchasers must satisfy themselves. 4. All photographs, measurements, floorplans and distances referred to are given as a guide only. 5. It should not be assumed that the property has all necessary planning, building regulation or other consents. 6. Whilst we have tried to describe the property as accurately as possible, if there is anything you have particular concerns over or sensitivities to, or would like further information about, please ask prior to arranging a viewing.



Energy Efficiency Rating		
	Current	Potential
Very energy efficient - lower running costs		
(92-100) A		
(81-91) B		
(69-80) C		
(55-68) D		
(49-54) E		
(41-48) F		
(35-40) G		
Not energy efficient - higher running costs		
England & Wales EU Directive 2002/91/EC		

Kensey House, 18 Western Road, Launceston, PL15 7AS

01566 774999

launceston@stags.co.uk

stags.co.uk



@StagsProperty

Cornwall | Devon | Somerset | Dorset | London