



7, Kings Meadow

7, Kings Meadow, Windmill Hill, Launceston, PL15 9TT



Central Launceston Location Bude 18 miles Plymouth 25 miles

A striking, detached, three bedroom home situated within a small collection of new homes in the heart of Launceston offering breath-taking views, garden, parking and far reaching views.

- Brand New Detached Three Bedroom House
- Garage And Off Road Parking
- High Specification, Air Source Heat Pump
- Low Maintenance Garden
- Highly Regarded Local Developer
- 10 Year AHCI Build Warranty
- Stunning Views
- Small Exclusive Development
- Freehold
- Council Tax Band TBC

Guide Price £395,000

SITUATION

The property is located less than half a mile from the town centre with a range of shops, sporting and social clubs. Launceston also offers a fully equipped leisure centre and two 18-hole golf courses. There are doctors, dentists and veterinary surgeries, a 24-hour supermarket and educational facilities available up to A-level standard. The A30 trunk road is easily accessible and links the Cathedral cities of Truro and Exeter. Exeter offers access to the M5 network, main line railway station serving London Paddington and an international airport. To the south is the city of Plymouth with its extensive shopping facilities, department stores, deep water marina and regular cross channel ferry port serving northern France and Spain.

DESCRIPTION

A brand-new detached home in a very central location. The bright first-floor landing gives access to all rooms and stairs leading to the second floor. The first-floor W.C. includes a wall-hung sink, mixer taps, and tiled flooring. The garage offers parking for one car or extra storage, with internal access from the hallway.

The utility room is equipped with a sink, washing machine, and tumble dryer, while the modern kitchen/diner has rear-facing windows boasting stunning views, integrated appliances, and oak flooring. The spacious living room has patio doors leading to the garden and additional under-stairs storage.

On the second floor, the landing leads to three bedrooms, including a master bedroom with an en-suite bathroom and walk-in wardrobe. A stylish family bathroom with a rainfall shower and tiled finish serves the second and third bedrooms, both offering lovely views.

OUTSIDE

The front of the property features a driveway with parking for two vehicles, with additional guest parking available within the estate. Stainless steel steps lead to the rear garden which is enclosed by fencing and includes a patio area, with the remainder laid to lawn.

VIEWINGS

Strictly by prior appointment with Stags Truro office on 01872 264488

SERVICES

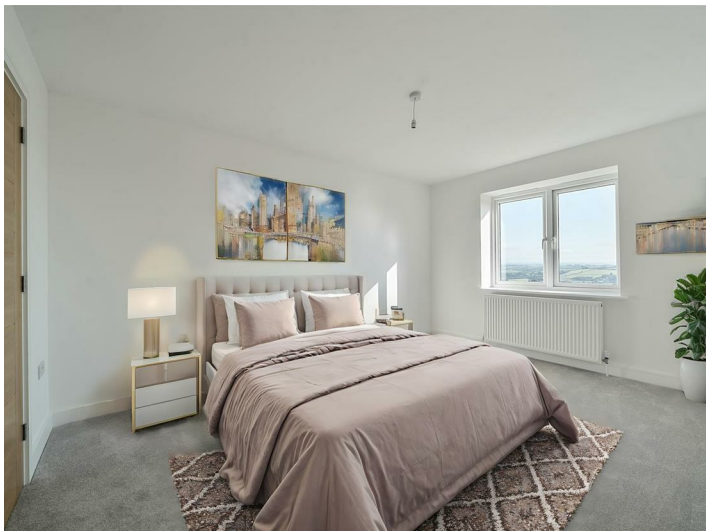
Mains water, electricity and drainage. Air source heat pump central heating. Broadband speed up to 1000 Mbps, Mobile coverage indoors – Likely. Mobile coverage outdoors – Likely.

DIRECTIONS

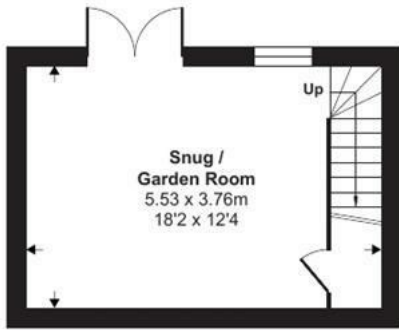
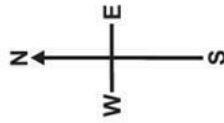
From Stags Launceston Office, proceed along Western Road through the town centre until Southgate Arch. Go through the arch and continue straight ahead, on the left hand bend, proceed up Race Hill until the two no entry signs. Turn right onto Bousall's Lane. At the top of Bousall's Lane turn left onto Windmill Hill, continue and take the second left onto Penworth Close. Drive along Penworth Close and at the end of the no through road you will arrive at Kings Meadow.

AGENTS NOTE

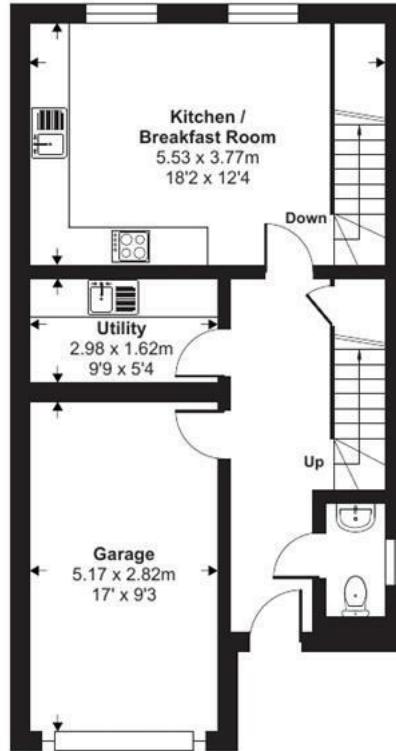
Some images of rooms have been virtually staged to suggest possibilities, alongside the original photos. The property will be empty of furnishings upon viewing. A service charge will be in place to take care on the management of communal land, roads, drains, etc. The cost has been estimated at around £40 per month.



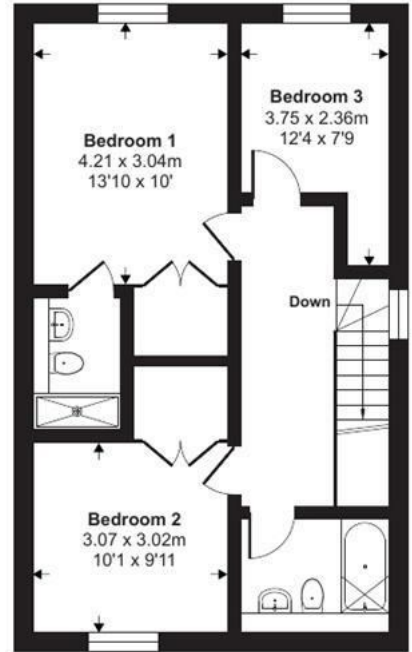
Approximate Area = 1221 sq ft / 113.4 sq m
 Garage = 161 sq ft / 15 sq m
 Total = 1382 sq ft / 128.4 sq m
 For identification only - Not to scale



Lower Ground Floor



Ground Floor



First Floor



Floor plan produced in accordance with RICS Property Measurement Standards incorporating International Property Measurement Standards (IPMS2 Residential). © nichecom 2024. Produced for Stags. REF: 1192668

IMPORTANT: Stags gives notice that: 1. These particulars are a general guide to the description of the property and are not to be relied upon for any purpose. 2. These particulars do not constitute part of an offer or contract. 3. We have not carried out a structural survey and the services, appliances and fittings have not been tested or assessed. Purchasers must satisfy themselves. 4. All photographs, measurements, floorplans and distances referred to are given as a guide only. 5. It should not be assumed that the property has all necessary planning, building regulation or other consents. 6. Whilst we have tried to describe the property as accurately as possible, if there is anything you have particular concerns over or sensitivities to, or would like further information about, please ask prior to arranging a viewing.



Energy Efficiency Rating		Current	Potential
(92-100) A	(81-91) B	(69-80) C	(55-65) D
(55-65) D	(45-54) E	(35-44) F	(2-34) G
Net energy efficient - higher scoring coats		EU Directive 2002/91/EC	
England & Wales		2022/91/EC	

Kensley House, 18 Western Road, Launceston, PL15 7AS

01566 774999

launceston@stags.co.uk

stags.co.uk