

**CHESTERTONS**







# Marylebone Lane

*Marylebone, W1U 1DB*

“*This distinguished residence offers an exquisite blend of contemporary elegance and timeless charm, nestled within one of Central London's most desirable neighbourhoods.*”

***Long let: £6,500 per week / £28,166.67 per month***

3



3



**2,165**  
*sqft*









## ***Property Description***

*Impressive three bedroom lateral apartment over 2,000 sq ft with a generously sized reception room in Marylebone.*

*Residents benefit from an exceptional array of amenities, including 24-hour concierge, a resident's chauffeur-driven Bentley, valet parking, a dedicated lounge, a 25-meter swimming pool, sauna, steam room, and treatment rooms.*

*Upon entering, a welcoming hallway with high ceilings, elegant wall panelling, and polished hardwood floors creates an immediate sense of grandeur. The light-filled open-plan living and dining area provides a sophisticated setting for both relaxation and entertaining. The meticulously designed kitchen is equipped with top-of-the-line appliances and ample storage.*

*The principal bedroom features plush carpeting and panoramic views of Marylebone Lane. Its en-suite bathroom offers a luxurious retreat with modern fixtures, a soaking tub, and a separate walk-in shower. Two additional en-suite bedrooms provide generous space and privacy.*

*The building's prime location offers seamless access to the vibrant Marylebone High Street, renowned for its exclusive boutiques, fine dining establishments, and cultural attractions.*





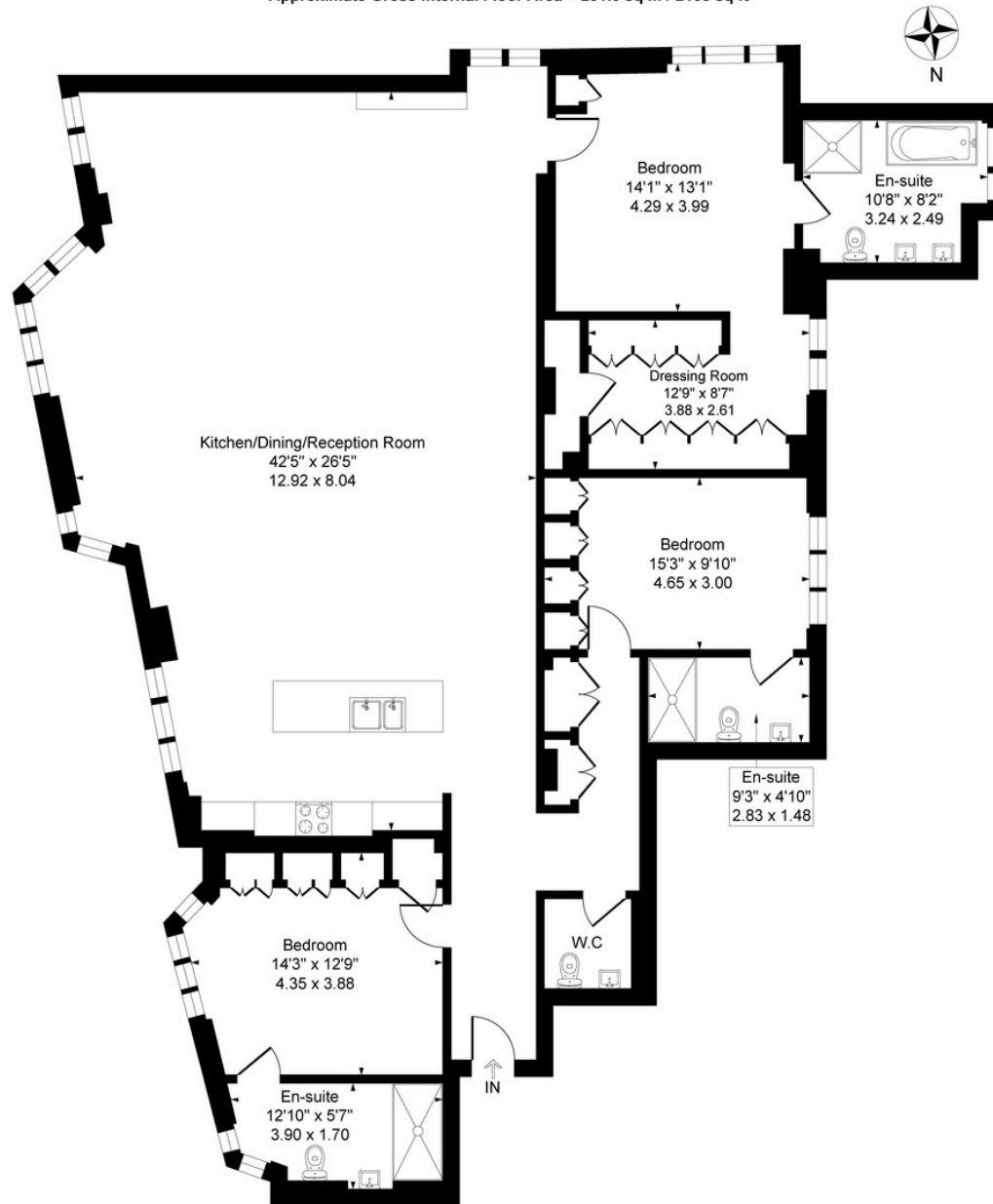






# The Mansion, 9 Marylebone Lane, Marylebone London W1U

Approximate Gross Internal Floor Area = 201.0 sq m / 2165 sq ft



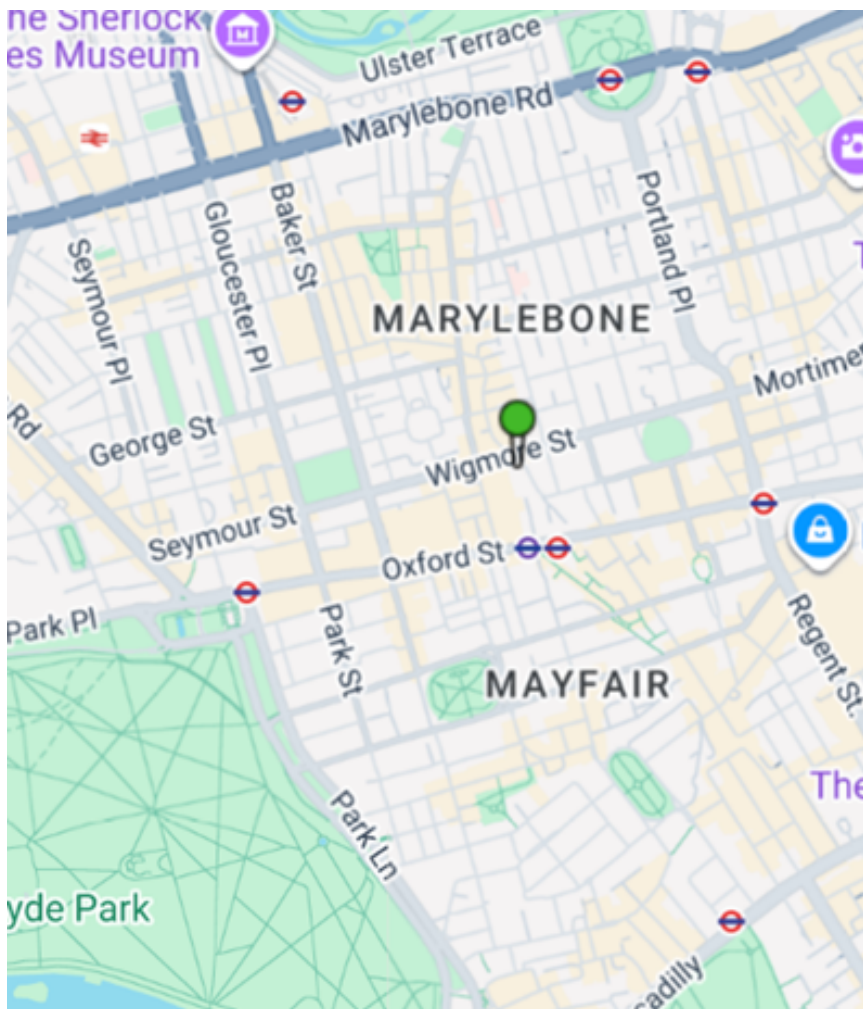
Third Floor

Illustration for identification purposes only, measurements are approximate, not to scale.



## Property Location

CHESTERTONS



Score	Energy rating	Current	Potential
92+	A		
81-91	B		
69-80	C	80 C	80 C
55-68	D		
39-54	E		
21-38	F		
1-20	G		

Additional tenant charges apply (fees apply to non-AST tenancies only)

Tenancy Agreement Fee: £300

References per Tenant/Guarantor: £60

Inventory check (approx. £100 – £250 inc. VAT)

[chestertons.co.uk/property-to-rent/applicable-fees](https://www.chestertons.co.uk/property-to-rent/applicable-fees)

### Chestertons Hyde Park & Marylebone

40 Connaught Street

London

W2 2AB

[chestertons.co.uk](https://www.chestertons.co.uk)

Chesterton Global Ltd trading as Chestertons for themselves and for the vendor of this property whose agents they are, give notice that (i) these particulars do not constitute any part of an offer or contract, (ii) all statements contained within these particulars are made without responsibility on the part of Chestertons or the vendor, (iii) whilst made in good faith, none of the statements contained within these particulars are to be relied upon as a statement or representation of fact, (iv) any intending purchasers must satisfy themselves by inspection or otherwise as to the correctness of each of the statements contained within these particulars, (v) the vendor does not make or give either Chestertons or any person in their employment any authority to make or give representation or warranty whatsoever in relation to this property. Wide angle lenses may be used. ©Copyright Chestertons | Chesterton Global Ltd | Registered Office 40 Connaught Street, Hyde Park, London W2 2AB Registered Company Number 05334580.