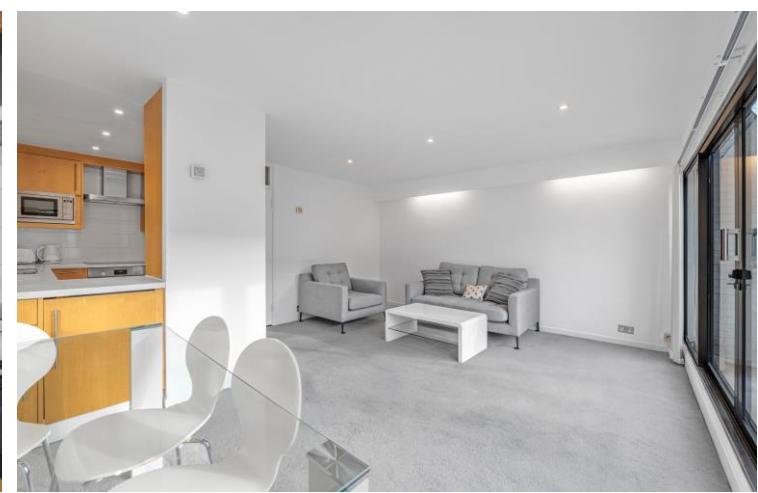




Hanover Steps
St. Georges Fields, W2





A beautifully presented third and fourth-floor maisonette, nestled within the esteemed St George's Fields development in the heart of Connaught Village. This elegant residence offers a refined living experience in central Hyde Park, with the added advantage of proximity to the premier amenities and excellent transport connections of Hyde Park, Marble Arch, Lancaster Gate, and Oxford Street.

The property boasts a spacious reception room leading onto a generous private terrace, which overlooks the immaculately landscaped communal gardens. A stylish semi-open-plan kitchen complements the living space, creating a perfect balance of sophistication and functionality. The upper floor hosts two well-proportioned double bedrooms, a sleek modern bathroom, and ample storage throughout. Secure parking is available by separate negotiation.

- Available now
- Gated development
- Two bedroom and one bathroom
- Central Hyde Park
- Private balcony
- Lift

£3,000 pcm

Additional tenant charges apply (fees apply to non-AST tenancies only)

Tenancy Agreement Fee: £300

References per Tenant/Guarantor: £60

Inventory check (approx. £100 – £250 inc. VAT)

chestertons.co.uk/property-to-rent/applicable-fees

Energy Efficiency Rating		
Energy efficient - lower running costs	Current	Potential
90-100 A		
81-90 B		
69-81 C		
55-69 D		
49-55 E		
41-49 F		
35-41 G		
Below 35 G		
Not energy efficient - higher running costs		
England, Scotland & Wales		
EU Directive 2002/91/EC		

Minimum Term: 12 months
Deposit Required: Five weeks
Local Authority: Westminster City Council
Council Tax Band: G
EPC Rating: D
Furnished, Part Furnished

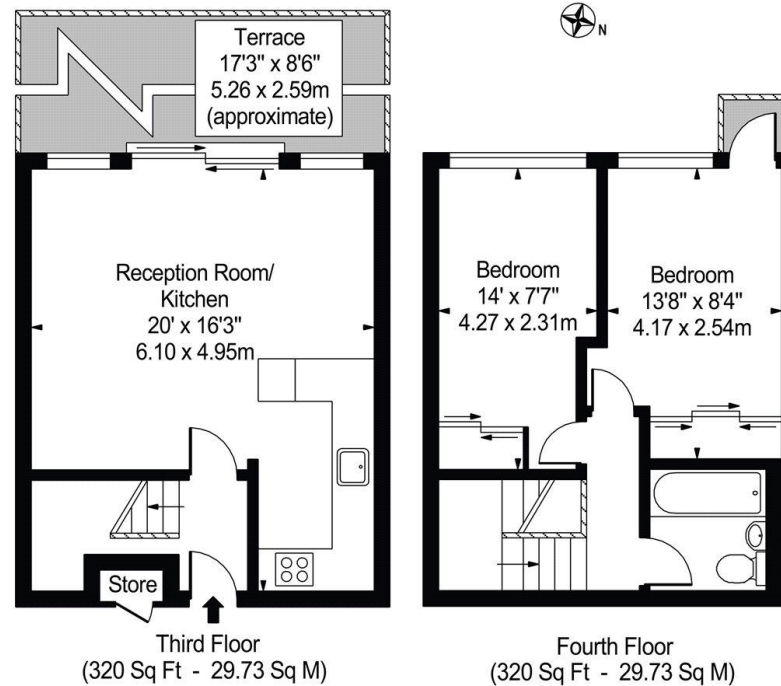
Chestertons Hyde Park & Marylebone Lettings

40 Connaught Street
 Hyde Park & Marylebone
 London
 W2 2AB

hydeparklettingsusers@chestertons.co.uk
 02072985950

St. Georges Fields, W2

Approximate Gross Internal Area 640 sq ft / 59 sq m



For Illustration Purposes Only - Not To Scale

This floor plan should be used as a general outline for guidance only and does not constitute in whole or in part an offer or contract.
Any intending purchaser or lessee should satisfy themselves by inspection, searches, enquiries and full survey as to the correctness of each statement.
Any areas, measurements or distances quoted are approximate and should not be used to value a property or be the basis of any sale or let.

Chesterton UK Services Limited trading as Chestertons for themselves and for the vendor of this property whose agents they are, give notice that (i) these particulars do not constitute any part of an offer or contract, (ii) all statements contained within these particulars are made without responsibility on the part of Chestertons or the vendor, (iii) whilst made in good faith, none of the statements contained within these particulars are to be relied upon as a statement or representation of fact, (iv) any intending purchasers must satisfy themselves by inspection or otherwise as to the correctness of each of the statements contained within these particulars, (v) the vendor does not make or give either Chestertons or any person in their employment any authority to make or give representation or warranty whatsoever in relation to this property. Wide angle lenses may be used. ©Copyright Chestertons | Chesterton Global Ltd | Registered Office 40 Connaught Street, Hyde Park, London W2 2AB Registered Company Number 05334580.



This paper is
100% recyclable