



Lanchester Court  
Seymour Street, W2

CHESTERTONS









Nestled moments from the serene expanses of Hyde Park, this beautifully presented apartment combines elegant design with modern comfort. The property features a spacious reception room that seamlessly connects to an open-plan kitchen and dining area, perfectly designed for both relaxed living and entertaining. The kitchen is fitted with Miele appliances, including a wine cooler, ensuring both style and practicality in every detail.

The apartment offers four generously proportioned bedrooms, thoughtfully designed with an abundance of built-in wardrobes and bespoke storage solutions. Bathed in natural light through eight south-facing windows, the living space enjoys tranquil views over the prestigious Victory Services Club, creating a warm and inviting atmosphere throughout the day.

Fully refurbished to a high specification just two years ago, the property boasts air conditioning in the reception room, kitchen, and three bedrooms, as well as underfloor heating in the kitchen, en suite bathroom, and third bedroom. Residents also benefit from communal heating and hot water, ensuring year-round comfort.

- Lateral Living
- Lift & Porter
- 1983 Sqft
- Air Conditioning
- 10 South Facing Windows
- High End Refurb

### £10,000 pcm

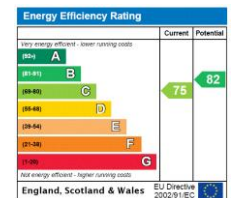
Additional tenant charges apply (fees apply to non-AST tenancies only)

Tenancy Agreement Fee: £300

References per Tenant/Guarantor: £60

Inventory check (approx. £100 – £250 inc. VAT)

[chestertons.co.uk/property-to-rent/applicable-fees](https://www.chestertons.co.uk/property-to-rent/applicable-fees)



**Minimum Term:** 12 months  
**Deposit Required:** Six weeks  
**Local Authority:** Westminster  
**Council Tax Band:** G  
**EPC Rating:** C  
**Furnished**

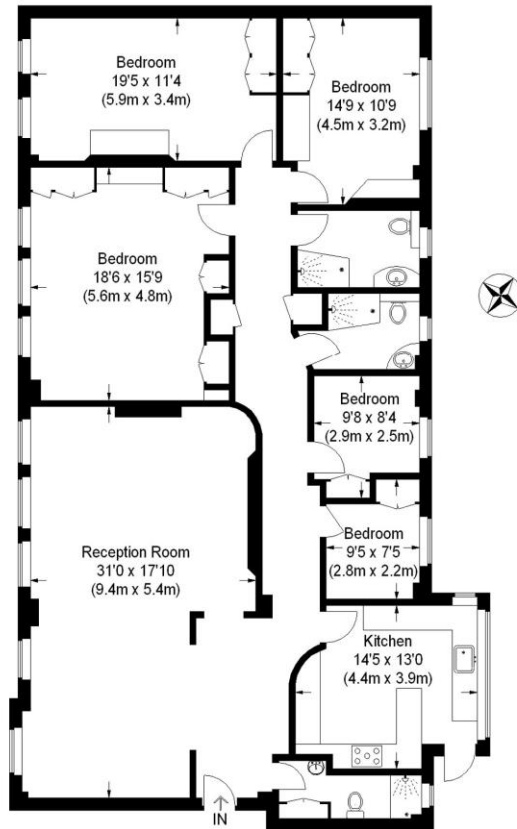
### Chestertons Hyde Park & Marylebone Lettings

40 Connaught Street  
 Hyde Park & Marylebone  
 London  
 W2 2AB

[hydeparklettingsusers@chestertons.co.uk](mailto:hydeparklettingsusers@chestertons.co.uk)  
 02072985950

## Seymour Street, W2

Approximate Gross Internal Area  
1980 sq ft / 184 sq m



### Second Floor

This plan is for layout guidance only. Not drawn to scale unless stated. Windows and door openings are approximate. Whilst every care is taken in the preparation of this plan, please check all dimensions, shapes and compass bearings before making any decisions reliant upon them. (ID95009)

Chesterton UK Services Limited trading as Chestertons for themselves and for the vendor of this property whose agents they are, give notice that (i) these particulars do not constitute any part of an offer or contract, (ii) all statements contained within these particulars are made without responsibility on the part of Chestertons or the vendor, (iii) whilst made in good faith, none of the statements contained within these particulars are to be relied upon as a statement or representation of fact, (iv) any intending purchasers must satisfy themselves by inspection or otherwise as to the correctness of each of the statements contained within these particulars, (v) the vendor does not make or give either Chestertons or any person in their employment any authority to make or give representation or warranty whatsoever in relation to this property. Wide angle lenses may be used. ©Copyright Chestertons | Chesterton Global Ltd | Registered Office 40 Connaught Street, Hyde Park, London W2 2AB Registered Company Number 05334580.



This paper is  
100% recyclable