



Chilworth House
Chilworth Mews, W2





A beautifully presented and recently refurbished one-bedroom residence, offered in excellent condition throughout. The apartment features a contemporary, fully equipped separate kitchen, a spacious reception room ideal for both relaxing and entertaining, a well-proportioned double bedroom, and a sleek modern bathroom. Additional generous storage further enhances the practicality of the home.

The property is offered unfurnished; however, the landlord is open to furnishing for the right tenant.

Nestled within the charming and peaceful Chilworth Mews, the property benefits from a quintessentially London setting—quiet, characterful, and moments from the vibrant amenities of Paddington, Hyde Park, and surrounding transport links. This desirable enclave offers a rare blend of tranquillity and convenience, making it an ideal place to call home.

- One bedroom and one bathroom
- Newly refurbished
- Separate kitchen
- Ample of storage
- Next door to Paddington Station

£2,500 pcm

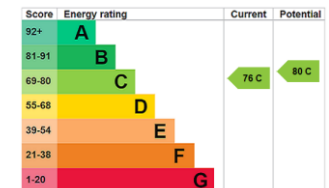
Additional tenant charges apply (fees apply to non-AST tenancies only)

Tenancy Agreement Fee: £300

References per Tenant/Guarantor: £60

Inventory check (approx. £100 – £250 inc. VAT)

chestertons.co.uk/property-to-rent/applicable-fees



Minimum Term: 12 months

Deposit Required: Five weeks

Local Authority: City of Westminster

Council Tax Band: D

EPC Rating: C

Part Furnished, Unfurnished

Chestertons Hyde Park & Marylebone Lettings

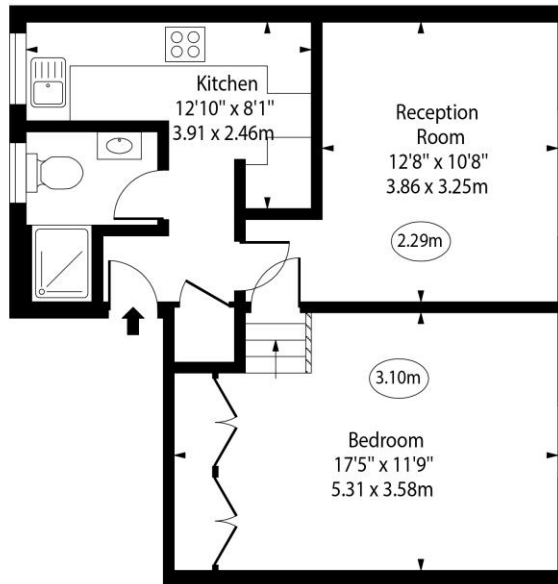
40 Connaught Street
Hyde Park & Marylebone
London
W2 2AB

hydeparklettingsusers@chestertons.co.uk

02072985950

Chilworth House,
Chilworth Mews, W2

○ - Ceiling Height



Third Floor

Approx Gross Internal Area 523 Sq Ft - 48.59 Sq M

Every attempt has been made to ensure the accuracy of the floor plan shown. However, all measurements, fixtures, fittings, and data shown are approximate interpretations and for illustrative purposes only. Measured according to the RICS. Not To Scale.

www.goldlens.co.uk
Ref. No. 029435E

