



Southwick Yard
Titchborne Row, W2

CHESTERTONS





This modern three-bedroom house with a study, three bathrooms and a guest WC is tucked away in a peaceful gated mews and benefits from private parking.

Beautifully finished throughout, the property offers high-quality interiors and a contemporary design. Situated within a quiet mews in the heart of Connaught Village, it also enjoys the convenience of off-street parking and a dedicated study.

The standout feature of the home is the bright and spacious open-plan living area. Two sets of full-height double windows flood the space with natural light, while sliding doors open onto a lightwell courtyard. The reception room, complete with hardwood flooring, flows seamlessly into the sleek open-plan kitchen equipped with high-end appliances and a breakfast bar.

The principal bedroom occupies the first floor and includes a stylish en-suite bathroom along with dual-aspect windows that overlook the terrace below.

On the lower ground floor, there are two additional guest bedrooms, each with generous built-in storage. One has its own en-suite, and both open directly onto a courtyard. This level also includes a well-proportioned study and an extra shower room.

- SHORT LET
- Three bedrooms and three bathrooms
- Guest WC
- Mews house
- High end appliances
- Off street parking

£9,750 pcm

Additional tenant charges apply (fees apply to non-AST tenancies only)

Tenancy Agreement Fee: £300

References per Tenant/Guarantor: £60

Inventory check (approx. £100 – £250 inc. VAT)

[chestertons.co.uk/property-to-rent/applicable-fees](https://www.chestertons.co.uk/property-to-rent/applicable-fees)

Score	Energy rating	Current	Potential
92+	A		
81-91	B		
69-80	C		
55-68	D		
39-54	E		
21-38	F		
1-20	G		
		84 B	90 B

Minimum Term:

1 months

Deposit Required:

5 weeks

Local Authority:

City of Westminster

Council Tax Band:

H

EPC Rating: B

Furnished

Chestertons Hyde Park & Marylebone Lettings

40 Connaught Street

Hyde Park & Marylebone

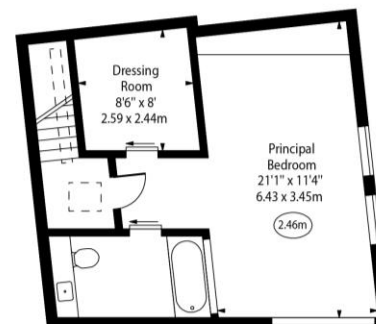
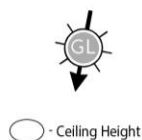
London

W2 2AB

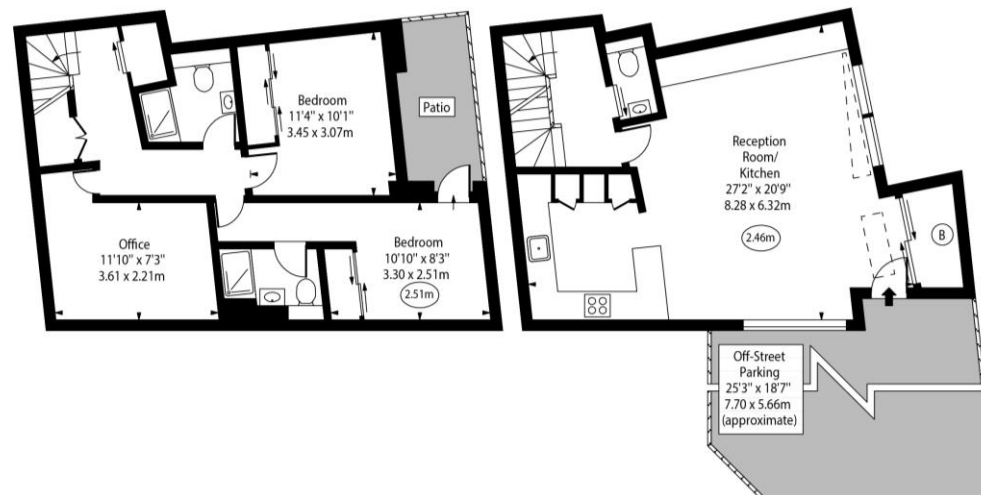
hydeparklettingsusers@chestertons.co.uk

02072985950

Southwick Yard,
Titchborne Row, W2



First Floor



Lower Ground Floor

Ground Floor

Approx Gross Internal Area 1520 Sq Ft - 141.21 Sq M

Every attempt has been made to ensure the accuracy of the floor plan shown.
However, all measurements, fixtures, fittings, and data shown are approximate interpretations and
for illustrative purposes only. Measured according to the RICS. Not To Scale.
www.goldlens.co.uk
Ref. No. 029639E

Chesterton UK Services Limited trading as Chestertons for themselves and for the vendor of this property whose agents they are, give notice that (i) these particulars do not constitute any part of an offer or contract, (ii) all statements contained within these particulars are made without responsibility on the part of Chestertons or the vendor, (iii) whilst made in good faith, none of the statements contained within these particulars are to be relied upon as a statement or representation of fact, (iv) any intending purchasers must satisfy themselves by inspection or otherwise as to the correctness of each of the statements contained within these particulars, (v) the vendor does not make or give either Chestertons or any person in their employment any authority to make or give representation or warranty whatsoever in relation to this property. Wide angle lenses may be used. ©Copyright Chestertons | Chesterton Global Ltd | Registered Office 40 Connaught Street, Hyde Park, London W2 2AB Registered Company Number 05334580.

