



Portland Place
Marylebone, W1





A simply stunning recently refurbished & interior designed lateral apartment extending to approximately 2741 square feet set within an imposing Grade II listed Robert Adam building on Portland Place. The apartment has been finished to exacting standards and benefits from two patios and wood flooring throughout the property.

Accommodation consists of a bright reception room, large fully fitted kitchen with direct access to one of the patios, separate dining room, master bedroom with dressing room and en-suite bathroom, two further double bedrooms (both en-suite), utility room and guest cloakroom.

Portland Place is superbly located offering easy access to world class shopping, Michelin start restaurants and the open spaces of Regents Park.

- Recently Refurbished & Interior Designed
- Three Bedrooms, Three Bathrooms & Patios
- Benefits From Wood Flooring Throughout
- Extends To Approximately 2741 Square Feet

£9,000 pcm

Additional tenant charges apply (fees apply to non-AST tenancies only)

Tenancy Agreement Fee: £360

References per Tenant/Guarantor: £60

Inventory check (approx. £100 – £250 inc. VAT)

chestertons.co.uk/property-to-rent/applicable-fees

Energy Efficiency Rating		
Energy efficiency class	Current	Potential
92-100 A		
81-91 B		
69-80 C		
55-68 D		
49-54 E	45	51
45-48 F		
35-39 G		
Not energy efficient - higher running costs		
EU Directive 2002/91/EC		

Minimum Term: 12 months
Deposit Required: Six weeks
Local Authority: City of Westminster
Council Tax Band: H
EPC Rating: E
Furnished

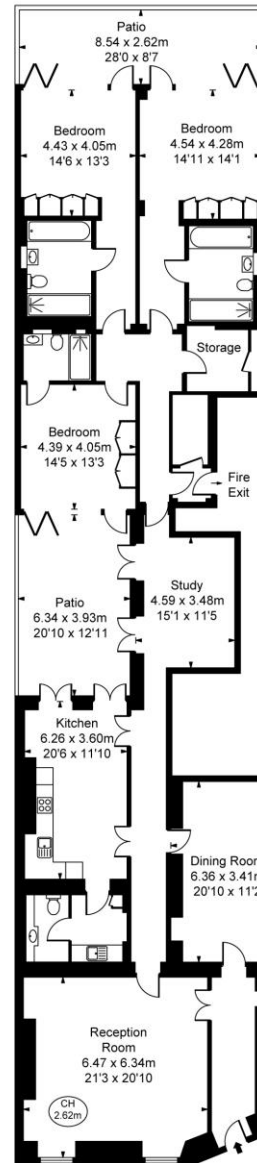
Chestertons Hyde Park & Marylebone Lettings

40 Connaught Street
 Hyde Park & Marylebone
 London
 W2 2AB

hydepark@chestertons.co.uk

02072985950

chestertons.co.uk



Portland Place, W1B
 Approximate Gross Internal Area
254.66 sq m / 2,741 sq ft
 (CH = Ceiling Heights)



Lower Ground Floor

This plan is not to scale. It is for guidance and not for valuation purposes.
 All measurements and areas are approximate only, and have been prepared in accordance with the current edition of the RICS Code of Measuring Practice.
 © Fulham Performance

Chesterton Global Ltd trading as Chestertons for themselves and for the vendor of this property whose agents they are, give notice that (i) these particulars do not constitute any part of an offer or contract, (ii) all statements contained within these particulars are made without responsibility on the part of Chestertons or the vendor, (iii) whilst made in good faith, none of the statements contained within these particulars are to be relied upon as a statement or representation of fact, (iv) any intending purchasers must satisfy themselves by inspection or otherwise as to the correctness of each of the statements contained within these particulars, (v) the vendor does not make or give either Chestertons or any person in their employment any authority to make or give representation or warranty whatsoever in relation to this property. Wide angle lenses may be used. ©Copyright Chestertons | Chesterton Global Ltd | Registered Office 40 Connaught Street, Hyde Park, London W2 2AB Registered Company Number 05334580.



This paper is
 100% recyclable