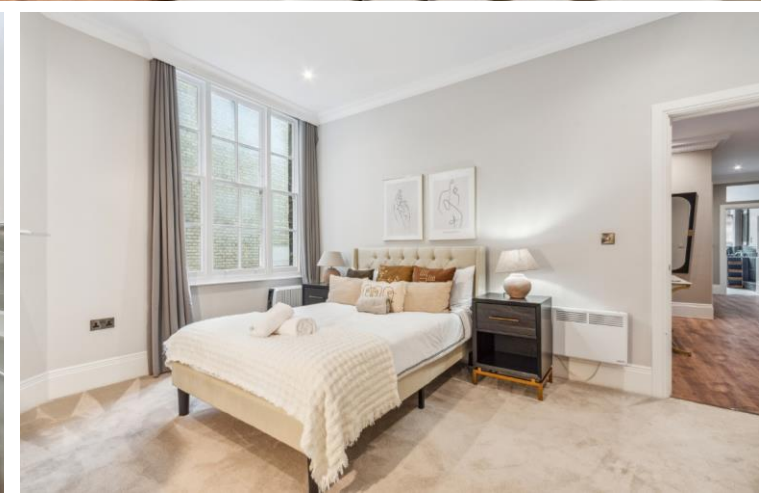
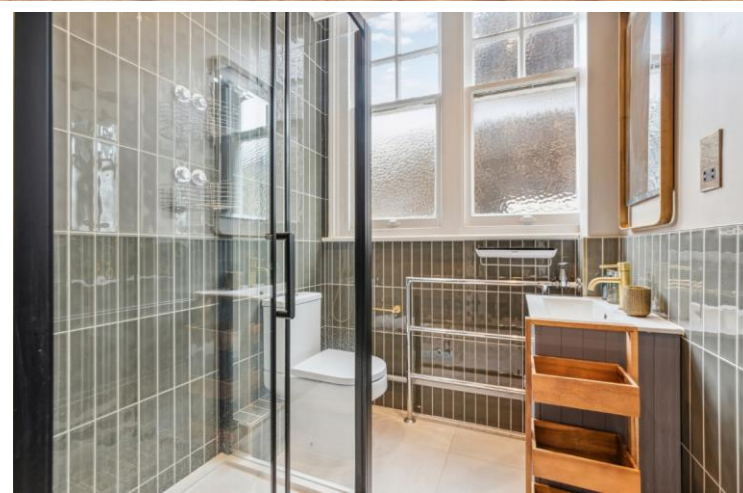




Montagu Mansions  
Marylebone, W1U









This delightful three-bedroom apartment is situated on the second floor of a sought-after red brick mansion block, complete with a lift. Recently renovated and featuring a 24-hour porter service, the apartment boasts a spacious entrance hallway, a captivating living room illuminated by French windows leading to a Juliet balcony, a well-appointed kitchen with parquet flooring and a marble splashback, three bedrooms, a stylish shower room, and a guest cloakroom.

Conveniently positioned near Marylebone High Street, residents can enjoy easy access to a wealth of boutiques, restaurants, and the scenic beauty of Regent's Park. Available furnished.

- Wooden floors
- Porter
- Lift
- Furnished
- 3 bedrooms

**£7,041.67 pcm**

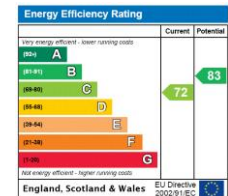
Additional tenant charges apply (fees apply to non-AST tenancies only)

Tenancy Agreement Fee: £300

References per Tenant/Guarantor: £60

Inventory check (approx. £100 – £250 inc. VAT)

[chestertons.co.uk/property-to-rent/applicable-fees](https://chestertons.co.uk/property-to-rent/applicable-fees)



**Minimum Term:** 12 months  
**Deposit Required:** £9,750.00  
**Local Authority:** City of Westminster  
**Council Tax Band:** F  
**EPC Rating:** C  
**Furnished**

*Chestertons Hyde Park & Marylebone Lettings*

40 Connaught Street  
 Hyde Park & Marylebone  
 London  
 W2 2AB

[hydepark@chestertons.co.uk](mailto:hydepark@chestertons.co.uk)

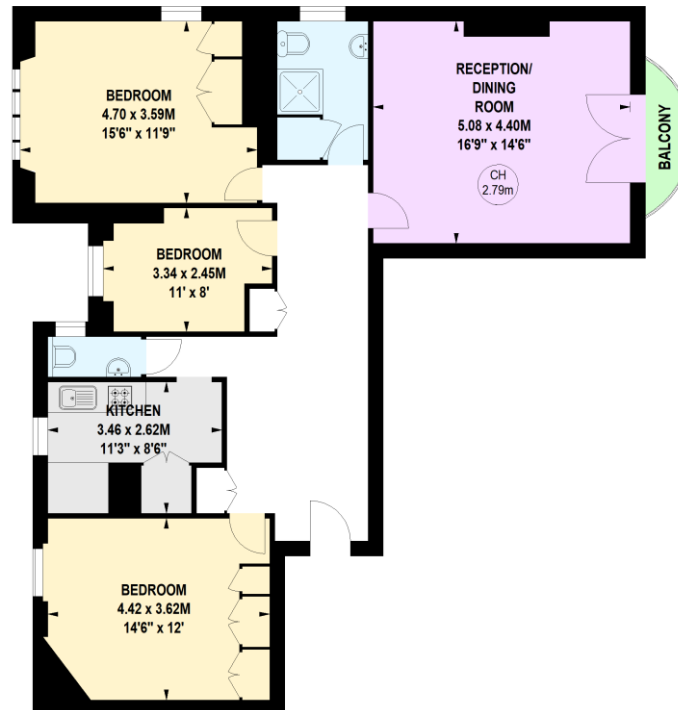
02072985950

[chestertons.co.uk](https://chestertons.co.uk)

## Montagu Mansions, W1U

Approximate gross internal area  
102.65 sq m / 1105 sq ft  
(Including Balcony)  
Balcony 1.95 sq m / 21 sq ft

Key :  
CH - Ceiling Height



### Second Floor

Not to scale, for guidance only and must not be relied upon as a statement of fact.  
All measurements and areas are approximate only

Chesterton Global Ltd trading as Chestertons for themselves and for the vendor of this property whose agents they are, give notice that (i) these particulars do not constitute any part of an offer or contract, (ii) all statements contained within these particulars are made without responsibility on the part of Chestertons or the vendor, (iii) whilst made in good faith, none of the statements contained within these particulars are to be relied upon as a statement or representation of fact, (iv) any intending purchasers must satisfy themselves by inspection or otherwise as to the correctness of each of the statements contained within these particulars, (v) the vendor does not make or give either Chestertons or any person in their employment any authority to make or give representation or warranty whatsoever in relation to this property. Wide angle lenses may be used. ©Copyright Chestertons | Chesterton Global Ltd | Registered Office 40 Connaught Street, Hyde Park, London W2 2AB Registered Company Number 05334580.



This paper is  
100% recyclable