



# York Street

London, W1H

£5,000 per month  
(£1,153.85 per week)

A superbly presented two bedroom apartment on the ground floor of an attractive period property. Comprising a wonderfully bright reception room with a modern open plan kitchen, a separate dining room, two generous bedrooms with en-suite shower room



# York Street

London, W1H

- Private entrance
- Wooden floors
- Split level
- Two double bedrooms
- Two bathrooms

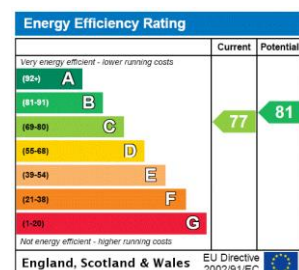




A superbly presented two bedroom apartment on the ground floor of an attractive period property. Comprising a wonderfully bright reception room with a modern open plan kitchen, a separate dining room, two generous bedrooms with en-suite shower room to the master and a guest bathroom. Additional features include a walk in wardrobe in bedroom two and a separate entrance.

York Street offers a fantastic location close to a wealth of transport links and central London attractions. Nearby transport links include Edgware Road and Paddington Station (Heathrow Express) and for motorists the A40 is easily accessible. Hyde Park and Regents Park are nearby as is Oxford Street, Baker Street and Marylebone High Street.

**Minimum Term:** 12 months  
**Deposit Required:** £6,923.08  
**Local Authority:** Westminster Council  
**Council Tax Band:** G  
**EPC Rating:** C  
**Furnished**

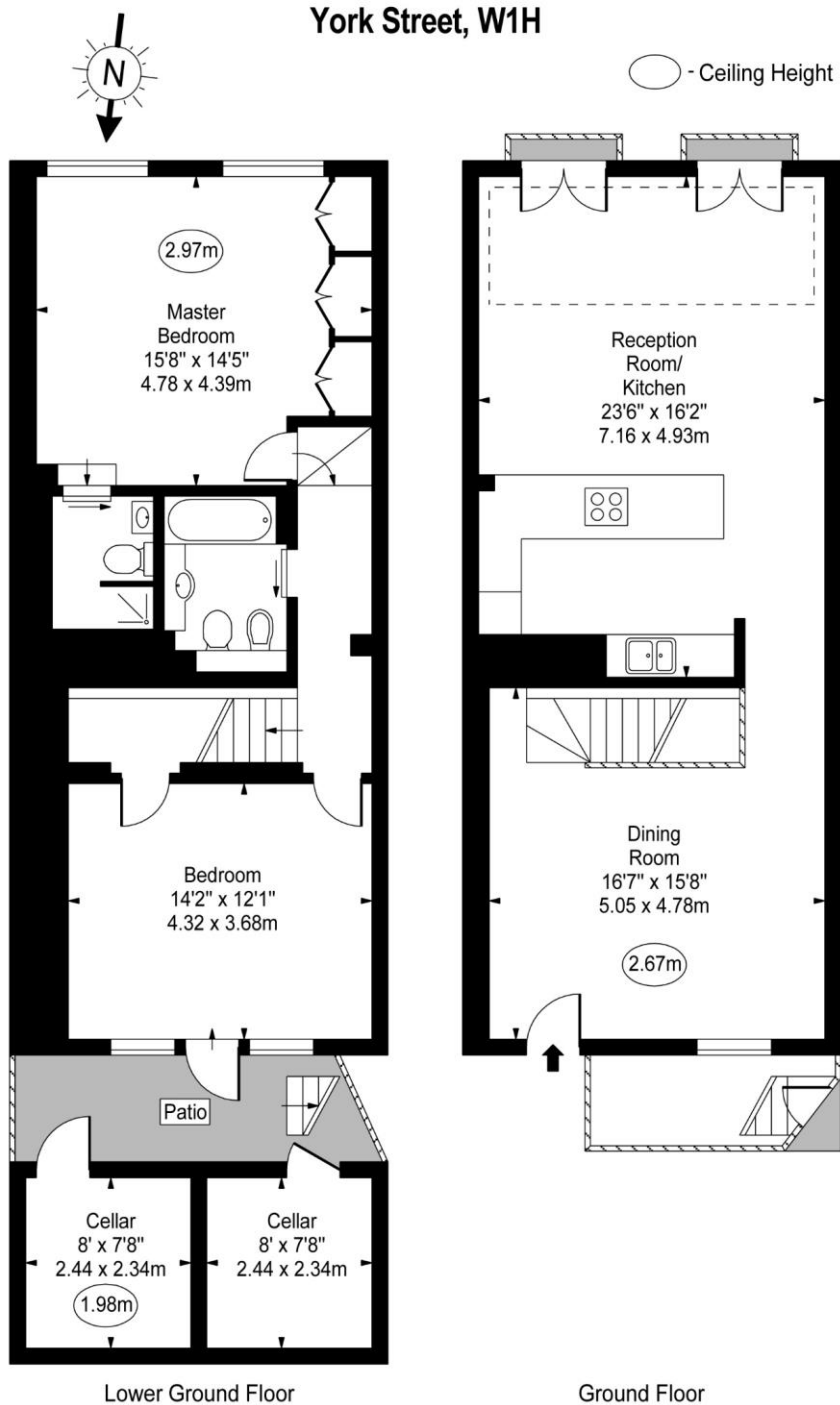


### *Chestertons Hyde Park & Marylebone Lettings*

40 Connaught Street  
 Hyde Park & Marylebone  
 London  
 W2 2AB  
[hydepark@chestertons.co.uk](mailto:hydepark@chestertons.co.uk)  
 02072985950  
[chestertons.co.uk](http://chestertons.co.uk)

Additional tenant charges apply (fees apply to non-AST tenancies only)  
 Tenancy Agreement Fee: £300  
 References per Tenant/Guarantor: £60  
 Inventory check (approx. £100 – £250 inc. VAT)  
[chestertons.co.uk/property-to-rent/applicable-fees](http://chestertons.co.uk/property-to-rent/applicable-fees)

# York Street, W1H



For Illustration Purposes Only - Not To Scale  
[www.goldlens.co.uk](http://www.goldlens.co.uk)  
 Ref. No. 016453E

