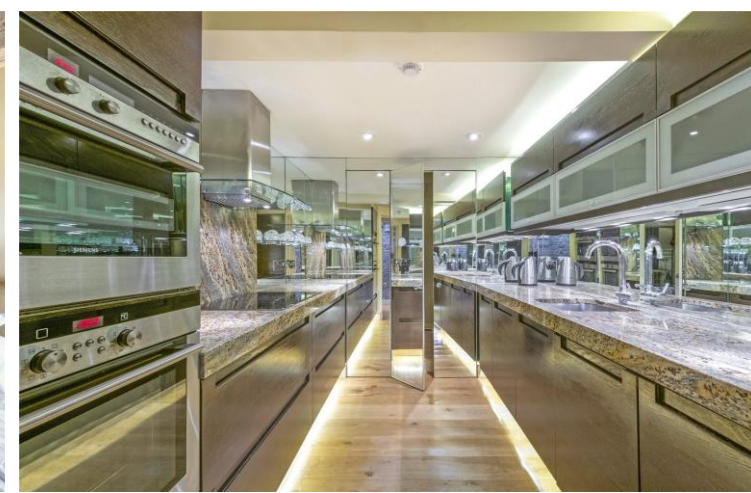




Hyde Park Square
Hyde Park, W2

CHESTERTONS





A stunning recently refurbished contemporary loft style duplex penthouse apartment offering exceptionally bright living space in a stucco fronted Grade II listed building moments from the open space of Hyde Park and the extensive transport connections to Central Line (Marble Arch and Lancaster Gate), Paddington/Heathrow Express and Elizabeth Line.

The property has south exposure with 11 windows and features exposed brick work, exposed wooden beams, wooden floors and a spiral staircase. The accommodation comprises a double height reception room overlooking the award winning Hyde Park Square communal gardens, a magnificent master bedroom with luxurious bathroom, two further bedrooms (one en-suite) and a fully integrated kitchen.

- Three bedrooms and Penthouse apartment
- Flexible furnishings
- Access to a garden square
- Furnished to a high specification
- Exposed beams & brick work
- Sky lights and beautiful wood floors

£4850 pcm

Additional tenant charges apply (fees apply to non-AST tenancies only)

Tenancy Agreement Fee: £300

References per Tenant/Guarantor: £60

Inventory check (approx. £100 – £250 inc. VAT)

chestertons.co.uk/property-to-rent/applicable-fees

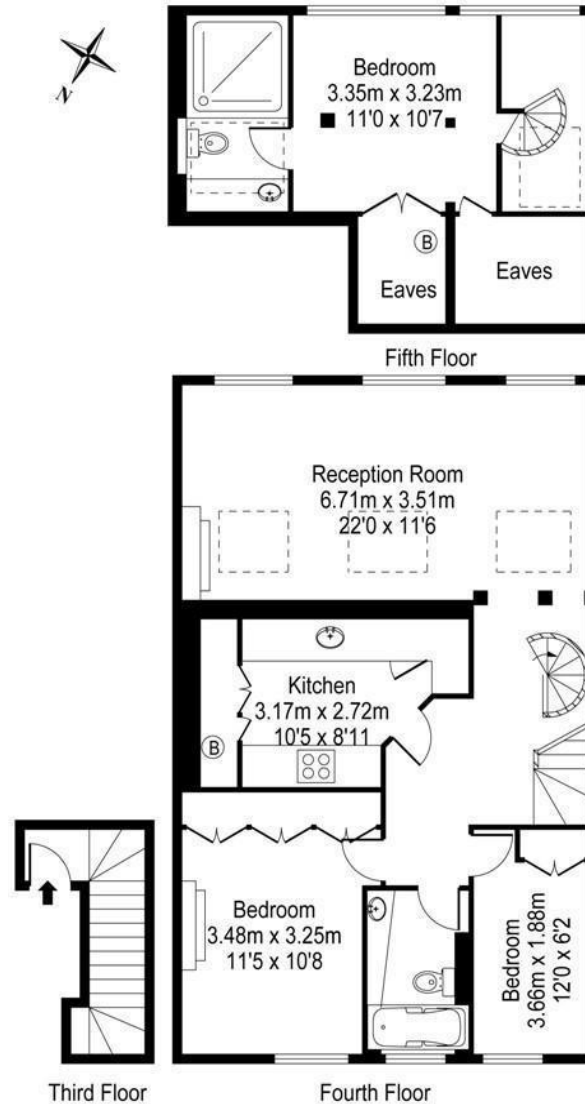
Energy Efficiency Rating		
Most energy efficient - lower running costs	Current	Potential
92-100 A		
81-91 B		
69-80 C		
55-68 D		
49-54 E		
41-48 F		
31-39 G		
Not energy efficient - higher running costs		
EU Directive 2002/91/EC		
England, Scotland & Wales		

Minimum Term: 12 months
Deposit Required: £6,000.00
Local Authority: City of Westminster
Council Tax Band: F
EPC Rating: D
Furnished, Part Furnished

Chestertons Hyde Park & Marylebone Lettings

40 Connaught Street
 Hyde Park & Marylebone
 London
 W2 2AB

hydeparklettingsusers@chestertons.co.uk
 02072985950



HYDE PARK SQUARE

APPROX. GROSS INTERNAL FLOOR AREA 1138 SQ FT / 105.72 SQ M

Chesterton UK Services Limited trading as Chestertons for themselves and for the vendor of this property whose agents they are, give notice that (i) these particulars do not constitute any part of an offer or contract, (ii) all statements contained within these particulars are made without responsibility on the part of Chestertons or the vendor, (iii) whilst made in good faith, none of the statements contained within these particulars are to be relied upon as a statement or representation of fact, (iv) any intending purchasers must satisfy themselves by inspection or otherwise as to the correctness of each of the statements contained within these particulars, (v) the vendor does not make or give either Chestertons or any person in their employment any authority to make or give representation or warranty whatsoever in relation to this property. Wide angle lenses may be used. ©Copyright Chestertons | Chesterton Global Ltd | Registered Office 40 Connaught Street, Hyde Park, London W2 2AB Registered Company Number 05334580.



This paper is
100% recyclable