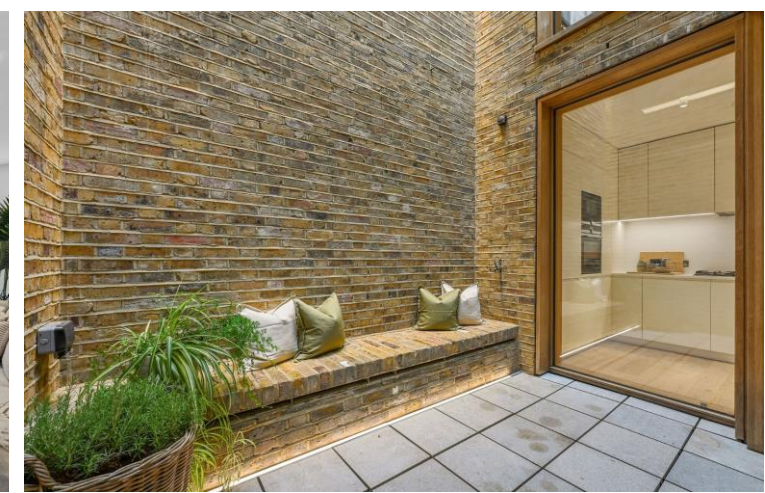
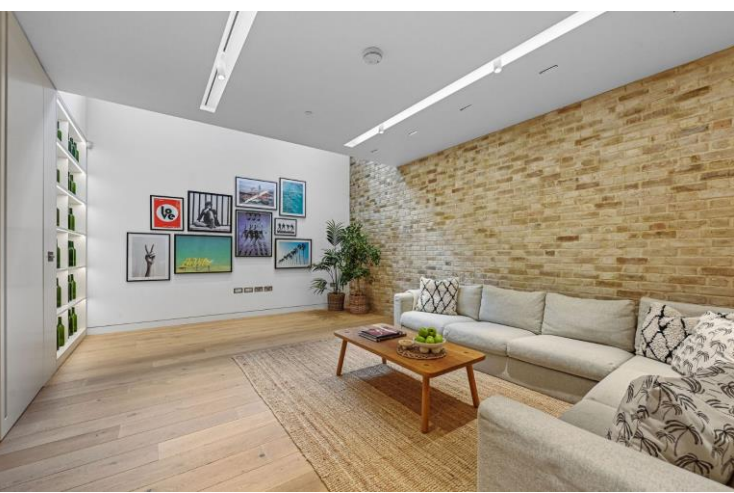




Bingham Place  
London, W1U

CHESTERTONS





Set on one of Marylebone's most picturesque tree-lined streets, this immaculately presented three-bedroom residence blends timeless character with refined modern living.

- Stunning interior
- Three double bedrooms
- Four bathrooms
- Beautiful patio and balcony
- Cinema room
- 3000sq.ft

**£5,500 pw**

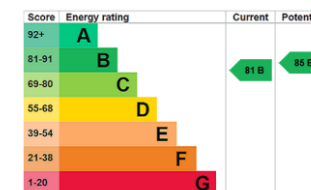
Additional tenant charges apply (fees apply to non-AST tenancies only)

Tenancy Agreement Fee: £360

References per Tenant/Guarantor: £60

Inventory check (approx. £100 – £250 inc. VAT)

[chestertons.co.uk/property-to-rent/applicable-fees](https://www.chestertons.co.uk/property-to-rent/applicable-fees)



**Minimum Term:** 12 months  
**Deposit Required:** Six weeks  
**Local Authority:** City of Westminster  
**Council Tax Band:** H  
**EPC Rating:** B  
**Furnished**

**Chestertons Hyde Park & Marylebone Lettings**

40 Connaught Street  
 Hyde Park & Marylebone  
 London  
 W2 2AB

[hydeparklettingsusers@chestertons.co.uk](mailto:hydeparklettingsusers@chestertons.co.uk)  
 02072985950

# Bingham Place

Approx. Gross Internal Area 3096 Sq Ft - 287.63 Sq M  
(Excluding Void)



Chesterton UK Services Limited trading as Chestertons for themselves and for the vendor of this property whose agents they are, give notice that (i) these particulars do not constitute any part of an offer or contract, (ii) all statements contained within these particulars are made without responsibility on the part of Chestertons or the vendor, (iii) whilst made in good faith, none of the statements contained within these particulars are to be relied upon as a statement or representation of fact, (iv) any intending purchasers must satisfy themselves by inspection or otherwise as to the correctness of each of the statements contained within these particulars, (v) the vendor does not make or give either Chestertons or any person in their employment any authority to make or give representation or warranty whatsoever in relation to this property. Wide angle lenses may be used. ©Copyright Chestertons | Chesterton Global Ltd | Registered Office 40 Connaught Street, Hyde Park, London W2 2AB Registered Company Number 05334580.

