



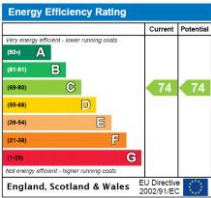
Quadrangle Tower  
Cambridge Square, W2



A bright spacious 1 bed 1 bath property located in a secure portered block in Hyde Park. The property benefits from plenty of natural light, separate modern kitchen, good storage and spacious bedroom

- Bright
- 1 bed 1 bath
- Good storage
- Portered block

**£2,750 pcm**  
Additional tenant charges apply (fees apply to non-AST tenancies only)  
Tenancy Agreement Fee: £300  
References per Tenant/Guarantor: £60  
Inventory check (approx. £100 – £250 inc. VAT)  
[chestertons.co.uk/property-to-rent/applicable-fees](https://chestertons.co.uk/property-to-rent/applicable-fees)



**Minimum Term:** 12 months  
**Deposit Required:** Five weeks  
**Local Authority:** Westminster City Council  
**Council Tax Band:** F  
**EPC Rating:** C  
**Furnished**

**Chestertons Hyde Park & Marylebone Lettings**  
40 Connaught Street  
Hyde Park & Marylebone  
London  
W2 2AB  
[hydeparklettingsusers@chestertons.co.uk](mailto:hydeparklettingsusers@chestertons.co.uk)  
02072985950

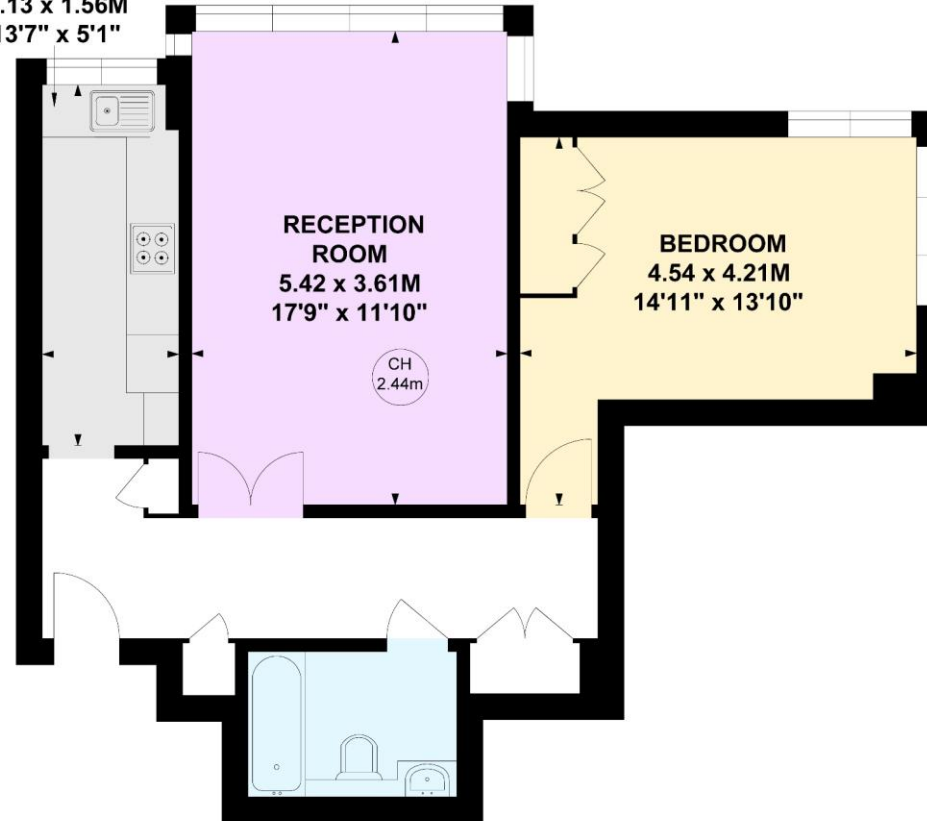
# Quadrangle Tower, W2

Approximate gross internal area

58.57 sq m / 630 sq ft

Key :  
CH - Ceiling Height

KITCHEN  
4.13 x 1.56M  
13'7" x 5'1"



## Ground Floor

Not to scale, for guidance only and must not be relied upon as a statement of fact.

All measurements and areas are approximate only

Chesterton UK Services Limited trading as Chestertons for themselves and for the vendor of this property whose agents they are, give notice that (i) these particulars do not constitute any part of an offer or contract, (ii) all statements contained within these particulars are made without responsibility on the part of Chestertons or the vendor, (iii) whilst made in good faith, none of the statements contained within these particulars are to be relied upon as a statement or representation of fact, (iv) any intending purchasers must satisfy themselves by inspection or otherwise as to the correctness of each of the statements contained within these particulars, (v) the vendor does not make or give either Chestertons or any person in their employment any authority to make or give representation or warranty whatsoever in relation to this property. Wide angle lenses may be used. ©Copyright Chestertons | Chesterton Global Ltd | Registered Office 40 Connaught Street, Hyde Park, London W2 2AB Registered Company Number 05334580.



This paper is  
100% recyclable