



Hampshire House
Hyde Park Place, W2





A rare opportunity to rent a luxurious lateral ground floor apartment set within an elegant period building directly opposite Hyde Park, offering approximately 3,178 sq. ft. of refined living space.

This exceptional residence seamlessly blends timeless period charm with modern sophistication. The apartment boasts four generously proportioned double bedrooms, three of which feature en-suite bathrooms, in addition to a contemporary family bathroom and a separate guest cloakroom.

The grand reception room enjoys a picturesque green outlook over Hyde Park and flows effortlessly into an impressive formal dining room, ideal for entertaining. A sleek, fully integrated kitchen is thoughtfully positioned separately to allow for both practicality and privacy.

Residents benefit from the convenience of a 24-hour porter service and access to a beautifully appointed communal reception area, adding to the exclusivity of this distinguished address.

Hampshire House is south facing portered period mansion block (with lift) on the north side of Hyde Park. It is close to the boutique shops, cafes, restaurants and pubs of Connaught Village, local transport links on Bayswater Road, at Marble Arch Underground Station and Paddington Station (Underground, National Rail, Heathrow Express and Crossrail) and entertainment in the West End.

- Luxury apartment
- Five bedrooms and four bathrooms
- Two receptions,
- Separate kitchen
- Guest bathroom
- Porter

£12,500 pcm

Additional tenant charges apply (fees apply to non-AST tenancies only)

Tenancy Agreement Fee: £300

References per Tenant/Guarantor: £60

Inventory check (approx. £100 – £250 inc. VAT)

chestertons.co.uk/property-to-rent/applicable-fees

Energy Efficiency Rating		
Very energy efficient - lower running costs	Current	Potential
90-100 A		84
81-89 B		
69-80 C	69	
55-68 D		
49-54 E		
45-48 F		
35-44 G		
Not energy efficient - higher running costs		
England, Scotland & Wales EU Directive 2002/91/EC		

Minimum Term: 12 months
Deposit Required: Six weeks
Local Authority: City of Westminster
Council Tax Band: H
EPC Rating: C
Unfurnished

Chestertons Hyde Park & Marylebone Lettings

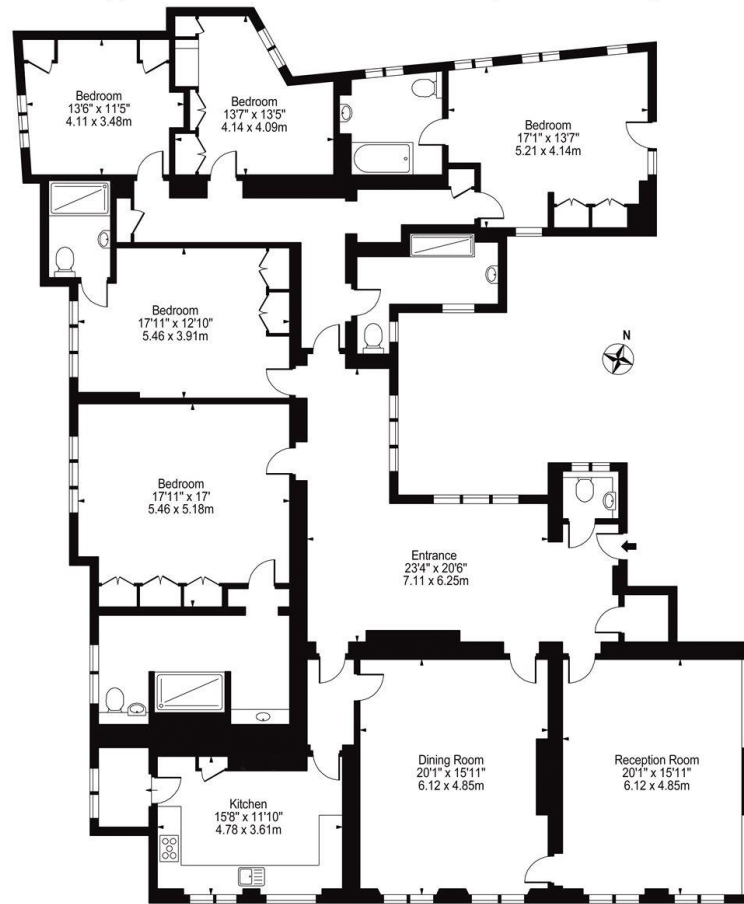
40 Connaught Street
 Hyde Park & Marylebone
 London
 W2 2AB

hydeparklettingsusers@chestertons.co.uk

02072985950

Hyde Park Place, W2

Approx. Gross Internal Area 3178 Sq Ft -295.24 Sq M



Ground Floor
For Illustration Purposes Only - Not To Scale

This floor plan should be used as a general outline for guidance only and does not constitute in whole or in part an offer or contract.
Any intending purchaser or lessee should satisfy themselves by inspection, searches, enquiries and full survey as to the correctness of each statement.
Any areas, measurements or distances quoted are approximate and should not be used to value a property or be the basis of any sale or let.

Chesterton UK Services Limited trading as Chestertons for themselves and for the vendor of this property whose agents they are, give notice that (i) these particulars do not constitute any part of an offer or contract, (ii) all statements contained within these particulars are made without responsibility on the part of Chestertons or the vendor, (iii) whilst made in good faith, none of the statements contained within these particulars are to be relied upon as a statement or representation of fact, (iv) any intending purchasers must satisfy themselves by inspection or otherwise as to the correctness of each of the statements contained within these particulars, (v) the vendor does not make or give either Chestertons or any person in their employment any authority to make or give representation or warranty whatsoever in relation to this property. Wide angle lenses may be used. ©Copyright Chestertons | Chesterton Global Ltd | Registered Office 40 Connaught Street, Hyde Park, London W2 2AB Registered Company Number 05334580.



This paper is
100% recyclable