



Hampshire House  
12 Hyde Park Place, W2









A luxurious ground floor apartment to rent within a desirable period building opposite Hyde Park. The property has recently undergone refurbishment throughout whilst retaining many period features and benefits from a 24 hr porter and communal gardens

- Newly Refurbished Luxury Apartment
- 5 Bedrooms, 4 Bathrooms, 2 Receptions, Fitted Kitchen
- Guest W/c, Porter, Lift, approx. 3175 sq ft
- Conveniently Located Close to Amenities & Opposite Hyde Park

**£2,500 per week (£10,833.33 pcm)**

Additional tenant charges apply (fees apply to non-AST tenancies only)

Tenancy Agreement Fee: £300

References per Tenant/Guarantor: £60

Inventory check (approx. £100 – £250 inc. VAT)

[chestertons.com/property-to-rent/applicable-fees](https://www.chestertons.com/property-to-rent/applicable-fees)

Energy Efficiency Rating		Current	Potential
Very energy efficient - lower running costs			
(95-100) A			
(81-95) B			
(69-81) C			
(55-69) D			
(39-55) E			
(21-39) F			
(1-21) G			
Not energy efficient - higher running costs			
England, Scotland & Wales		EU Directive 2002/91/EC	

**Minimum Term:** months  
**Deposit Required:** £0.00  
**Local Authority:**  
**Council Tax Band:**  
**EPC Rating:** C  
**Furnished, Unfurnished**

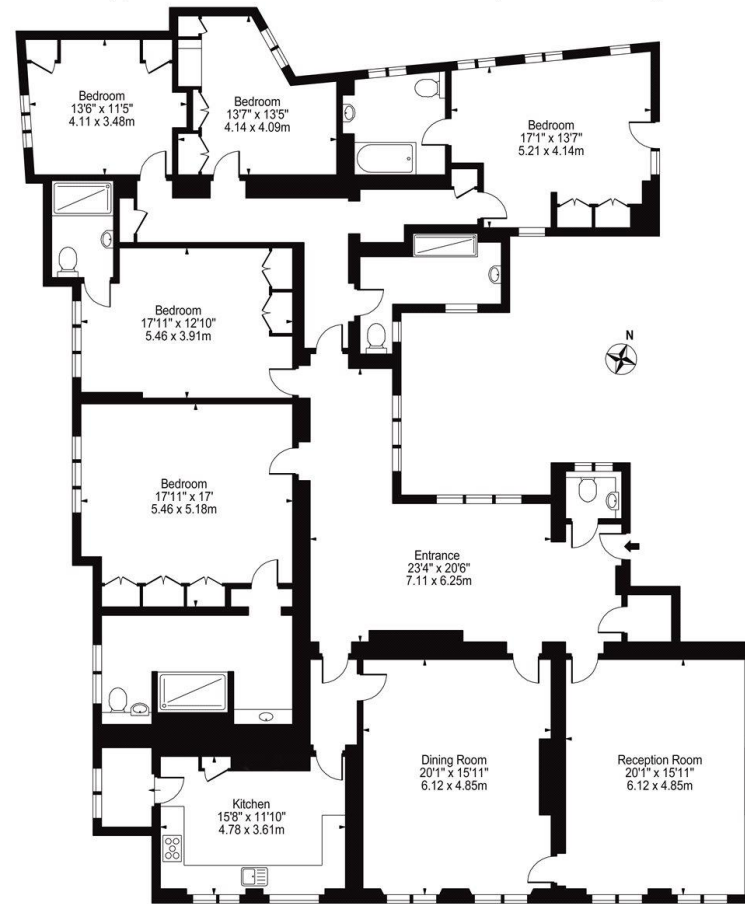
**Chestertons Hyde Park & Marylebone Lettings**

40 Connaught Street  
 Hyde Park & Marylebone  
 London  
 W2 2AB

[lettings.hydepark@chestertons.com](mailto:lettings.hydepark@chestertons.com)  
 02072985950

# Hyde Park Place, W2

Approx. Gross Internal Area 3178 Sq Ft -295.24 Sq M



Ground Floor  
For Illustration Purposes Only - Not To Scale

This floor plan should be used as a general outline for guidance only and does not constitute in whole or in part an offer or contract. Any intending purchaser or lessee should satisfy themselves by inspection, searches, enquiries and full survey as to the correctness of each statement. Any areas, measurements or distances quoted are approximate and should not be used to value a property or be the basis of any sale or let.

Chesterton Global Ltd trading as Chestertons for themselves and for the vendor of this property whose agents they are, give notice that (i) these particulars do not constitute any part of an offer or contract, (ii) all statements contained within these particulars are made without responsibility on the part of Chestertons or the vendor, (iii) whilst made in good faith, none of the statements contained within these particulars are to be relied upon as a statement or representation of fact, (iv) any intending purchasers must satisfy themselves by inspection or otherwise as to the correctness of each of the statements contained within these particulars, (v) the vendor does not make or give either Chestertons or any person in their employment any authority to make or give representation or warranty whatsoever in relation to this property. Wide angle lenses may be used. ©Copyright Chestertons | Chesterton Global Ltd | Registered Office 40 Connaught Street, Hyde Park, London W2 2AB Registered Company Number 05334580.