



Gloucester Place
Marylebone, W1

CHESTERTONS





Positioned on the sought-after Gloucester Place, this beautifully refurbished apartment offers a refined blend of period charm and modern living. The property boasts a generous and light-filled reception room, enhanced by expansive windows and an elegant feature fireplace, creating a warm and inviting atmosphere.

A separate, contemporary kitchen is fully equipped and offers ample space for dining, making it ideal for both everyday living and entertaining.

The accommodation comprises two generously sized double bedrooms, including one with integrated wardrobes and an additional walk-in wardrobe, providing excellent storage options. A well-appointed bathroom features both a bathtub and overhead shower, designed with a sleek and tasteful aesthetic.

Further benefits include access to a quaint patio garden, offering a serene outdoor escape.

Gloucester Place enjoys an enviable location, just moments from the boutique shops, cafés, and cultural attractions of Marylebone and St. John's Wood. The lush green spaces of Regent's Park are also within close proximity. The property lies north of Dorset Square, while excellent transport links are provided by Marylebone Station and Baker Street Underground Station—both conveniently located next door to the apartment.

- Newly refurbished
- Two bedrooms and one bathroom
- Professionally managed
- Quality furniture
- Walk in wardrobe
- Private patio

£7,301.67 pcm

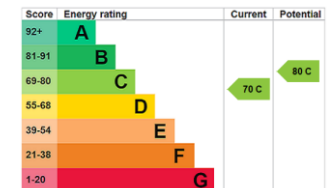
Additional tenant charges apply (fees apply to non-AST tenancies only)

Tenancy Agreement Fee: £300

References per Tenant/Guarantor: £60

Inventory check (approx. £100 – £250 inc. VAT)

[chestertons.co.uk/property-to-rent/applicable-fees](https://www.chestertons.co.uk/property-to-rent/applicable-fees)



Minimum Term: 12 months
Deposit Required: £10,110.00
Local Authority: City of Westminster
Council Tax Band: F
EPC Rating: C
Furnished

Chestertons Hyde Park & Marylebone Lettings

40 Connaught Street
 Hyde Park & Marylebone
 London
 W2 2AB

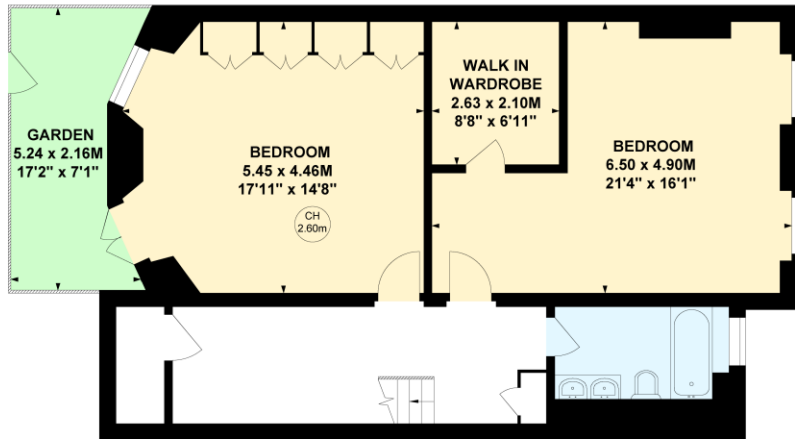
hydeparklettingsusers@chestertons.co.uk
 02072985950

Gloucester Place, W1U

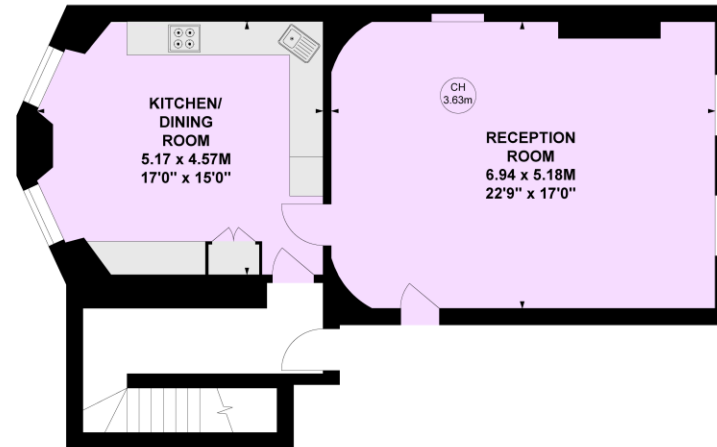
Approximate gross internal area

151.61 sq m / 1632 sq ft

Key :
CH - Ceiling Height



Lower Ground Floor



Ground Floor

Not to scale, for guidance only and must not be relied upon as a statement of fact.
All measurements and areas are approximate only

Chesterton UK Services Limited trading as Chestertons for themselves and for the vendor of this property whose agents they are, give notice that (i) these particulars do not constitute any part of an offer or contract, (ii) all statements contained within these particulars are made without responsibility on the part of Chestertons or the vendor, (iii) whilst made in good faith, none of the statements contained within these particulars are to be relied upon as a statement or representation of fact, (iv) any intending purchasers must satisfy themselves by inspection or otherwise as to the correctness of each of the statements contained within these particulars, (v) the vendor does not make or give either Chestertons or any person in their employment any authority to make or give representation or warranty whatsoever in relation to this property. Wide angle lenses may be used. ©Copyright Chestertons | Chesterton Global Ltd | Registered Office 40 Connaught Street, Hyde Park, London W2 2AB Registered Company Number 05334580.



This paper is
100% recyclable