



The Quadrangle  
Hyde Park, W2





A bright and beautifully presented two-bedroom apartment situated on the second floor of a well-maintained and secure purpose-built block. This exceptional property boasts a long lease and offers numerous desirable features, including 24-hour portage for added security and convenience, two passenger lifts ensuring easy access, and a delightful communal garden for residents to enjoy.

Quadrangle Tower is ideally located in a prime area, close to the serene expanses of Hyde Park, providing an excellent space for outdoor activities and relaxation. Additionally, the vibrant Marble Arch and the comprehensive amenities of Oxford Street are just a short walk away. For those needing efficient transport links, Paddington Station, with its Heathrow Express service, ensures quick and easy access to the airport, making this property perfect for frequent travellers.

Whether you are looking for a stylish city residence or a conveniently located investment property, this apartment in Quadrangle Tower offers an exceptional blend of comfort, security, and accessibility in one of London's most desirable neighbourhoods.

- Porter
- lift
- communal gardens
- Furnished

### £3,500 pcm

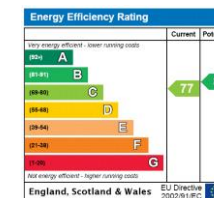
Additional tenant charges apply (fees apply to non-AST tenancies only)

Tenancy Agreement Fee: £300

References per Tenant/Guarantor: £60

Inventory check (approx. £100 – £250 inc. VAT)

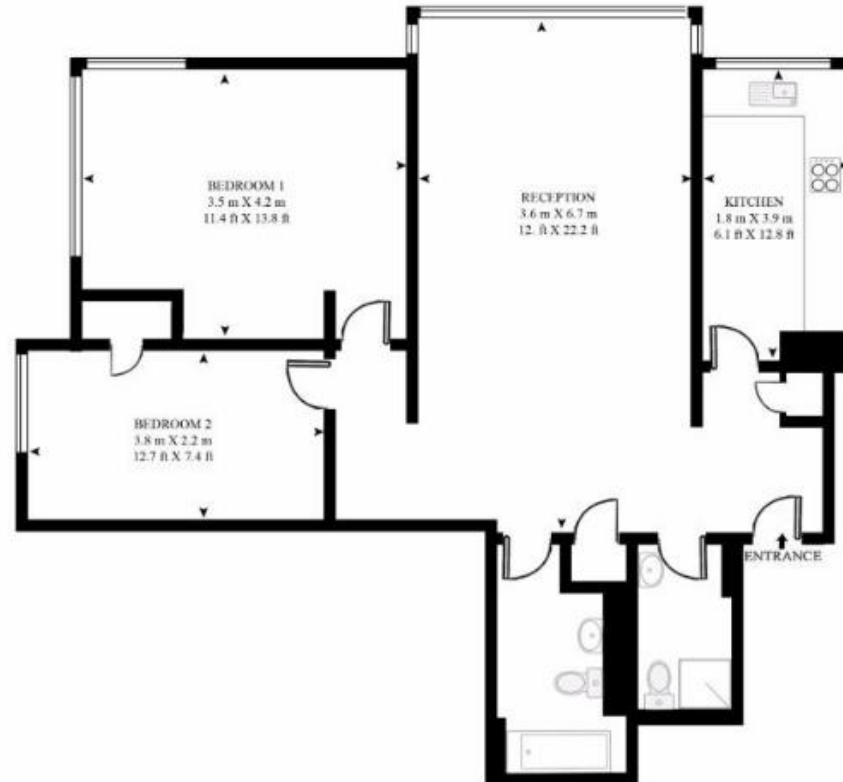
[chestertons.co.uk/property-to-rent/applicable-fees](http://chestertons.co.uk/property-to-rent/applicable-fees)



**Minimum Term:** 12 months  
**Deposit Required:** 5 weeks  
**Local Authority:** Westminster  
**Council Tax Band:** E  
**EPC Rating:** C  
**Furnished**

### Chestertons Hyde Park & Marylebone Lettings

40 Connaught Street  
 Hyde Park & Marylebone  
 London  
 W2 2AB  
[hydepark@chestertons.co.uk](mailto:hydepark@chestertons.co.uk)  
 02072985950



SECOND FLOOR

Chesterton Global Ltd trading as Chestertons for themselves and for the vendor of this property whose agents they are, give notice that (i) these particulars do not constitute any part of an offer or contract, (ii) all statements contained within these particulars are made without responsibility on the part of Chestertons or the vendor, (iii) whilst made in good faith, none of the statements contained within these particulars are to be relied upon as a statement or representation of fact, (iv) any intending purchasers must satisfy themselves by inspection or otherwise as to the correctness of each of the statements contained within these particulars, (v) the vendor does not make or give either Chestertons or any person in their employment any authority to make or give representation or warranty whatsoever in relation to this property. Wide angle lenses may be used. ©Copyright Chestertons | Chesterton Global Ltd | Registered Office 40 Connaught Street, Hyde Park, London W2 2AB Registered Company Number 05334580.



This paper is  
100% recyclable