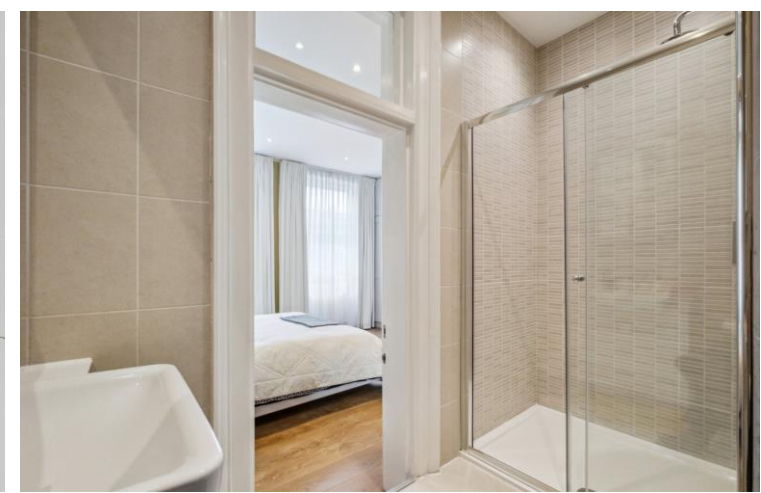




Cumberland Mansions
Seymour Place, W1

CHESTERTONS





A spacious 1,218 sq ft first-floor apartment situated within the distinguished red-brick period building of Cumberland Mansions, located on the sought-after George Street in Marylebone. This elegant mansion block offers the convenience of a lift and the benefit of caretaker.

The apartment features four well-proportioned bedrooms, two bathrooms, a generous reception room, and a fully fitted separate kitchen, all thoughtfully laid out to provide comfortable and stylish living.

Ideally positioned, Cumberland Mansions is within close proximity to Oxford Street, Baker Street, and the array of fashionable boutiques, cafes, and restaurants that define Marylebone. Excellent transport links are also nearby, with Marble Arch and Baker Street underground stations just a short walk away.

- Four bedrooms and two bathrooms
- First Floor with lift
- Caretaker
- Period Mansion Block
- Very spacious and bright
- Excellent location close to Marble Arch Station

£5,600 pcm

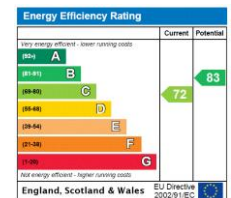
Additional tenant charges apply (fees apply to non-AST tenancies only)

Tenancy Agreement Fee: £300

References per Tenant/Guarantor: £60

Inventory check (approx. £100 – £250 inc. VAT)

chestertons.co.uk/property-to-rent/applicable-fees



Minimum Term: 12 months
Deposit Required: Five weeks
Local Authority: City of Westminster
Council Tax Band: G
EPC Rating: C
Part Furnished, Unfurnished

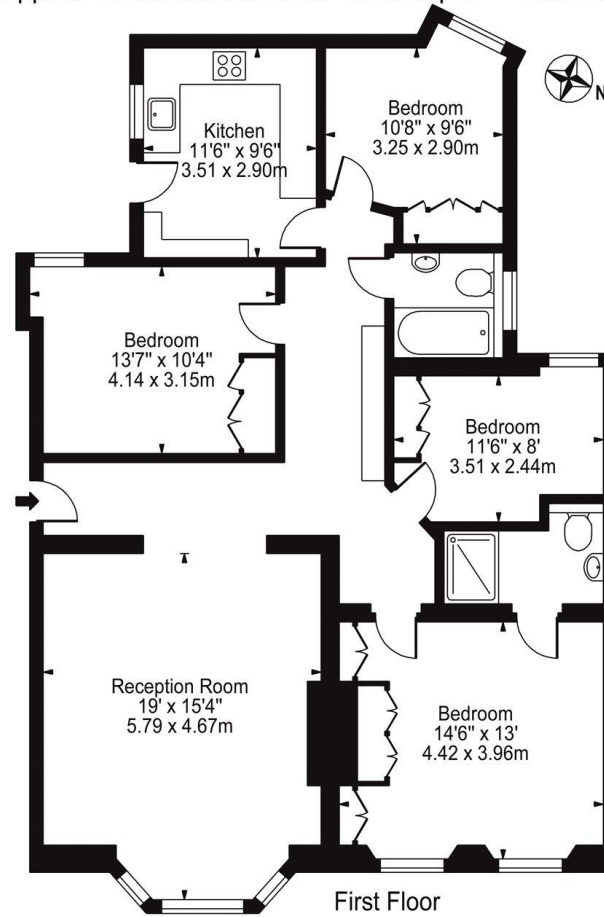
Chestertons Hyde Park & Marylebone Lettings

40 Connaught Street
 Hyde Park & Marylebone
 London
 W2 2AB

hydeparklettingsusers@chestertons.co.uk
 02072985950

Seymour Place, W1

Approx. Gross Internal Area 1218 Sq Ft - 113.16 Sq M



For Illustration Purposes Only - Not To Scale

This floor plan should be used as a general outline for guidance only and does not constitute in whole or in part an offer or contract.
Any intending purchaser or lessee should satisfy themselves by inspection, searches, enquiries and full survey as to the correctness of each statement.
Any areas, measurements or distances quoted are approximate and should not be used to value a property or be the basis of any sale or let.

Chesterton UK Services Limited trading as Chestertons for themselves and for the vendor of this property whose agents they are, give notice that (i) these particulars do not constitute any part of an offer or contract, (ii) all statements contained within these particulars are made without responsibility on the part of Chestertons or the vendor, (iii) whilst made in good faith, none of the statements contained within these particulars are to be relied upon as a statement or representation of fact, (iv) any intending purchasers must satisfy themselves by inspection or otherwise as to the correctness of each of the statements contained within these particulars, (v) the vendor does not make or give either Chestertons or any person in their employment any authority to make or give representation or warranty whatsoever in relation to this property. Wide angle lenses may be used. ©Copyright Chestertons | Chesterton Global Ltd | Registered Office 40 Connaught Street, Hyde Park, London W2 2AB Registered Company Number 05334580.



This paper is
100% recyclable