

# LANCASTER GATE

---

W2

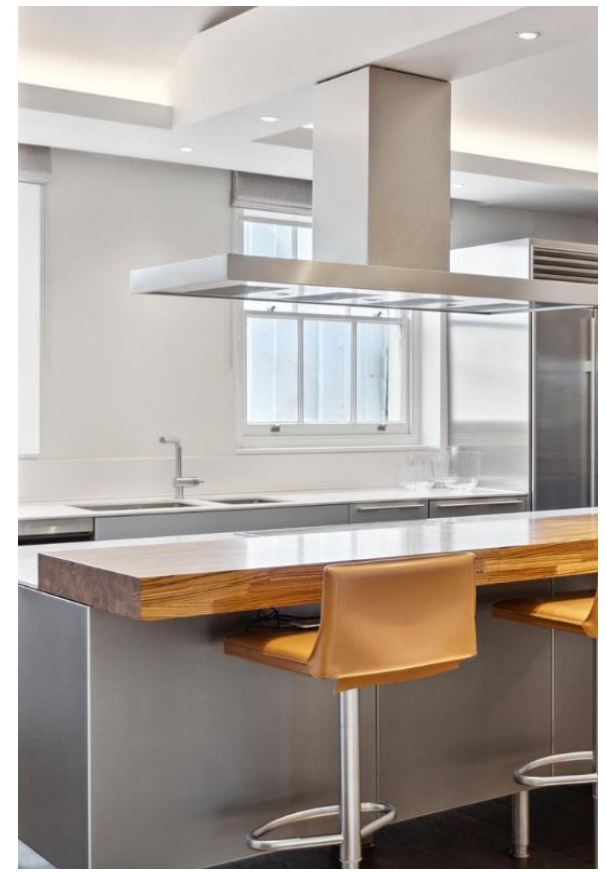
CHESTERTONS

# LANCASTER GATE

**SHORT LET:** A beautifully appointed and fully air-conditioned four-bedroom penthouse apartment, spanning approximately 2,622 sq. ft, situated on the fourth floor of an exclusive building.







## Specifications

- 2622 Lateral Penthouse Apartment
- Direct Lift Access
- Air-conditioned
- 4 Bedrooms
- Ensuite Bathrooms
- Allocated Parking Space
- Close to Lancaster Gate Station
- Close to Paddington Station
- Superb Unspoilt Southerly Views over Hyde Park









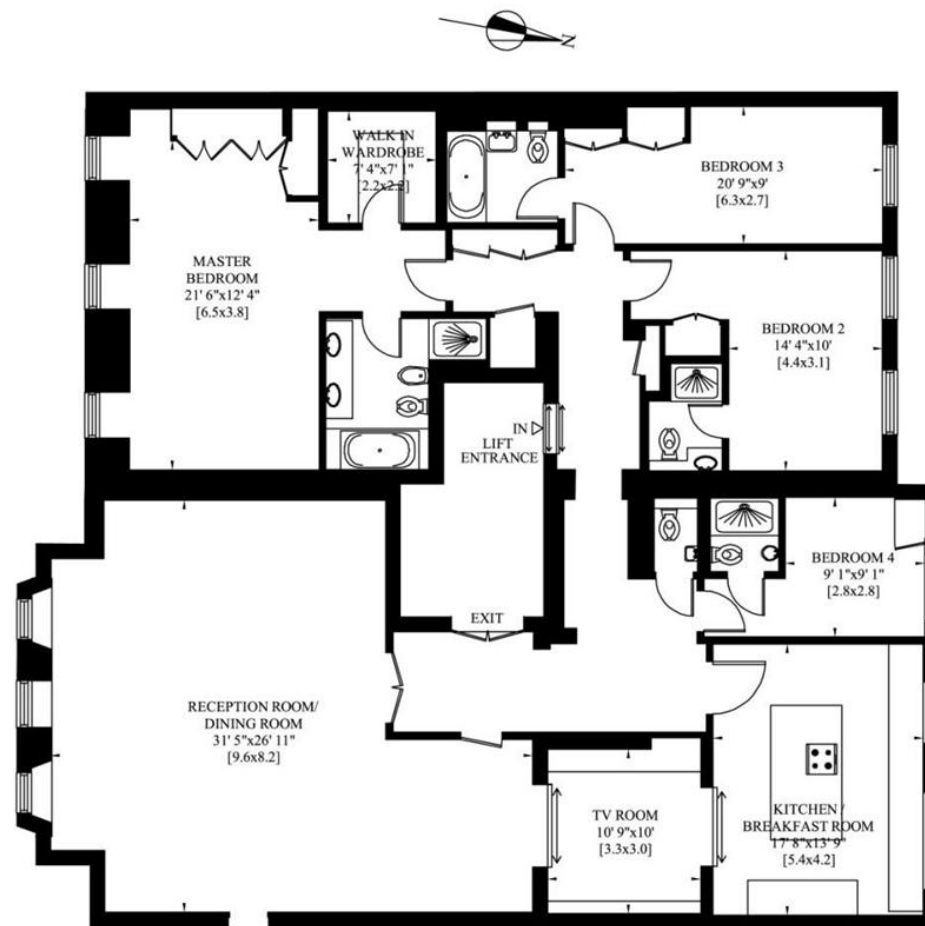






Price: £35,000 | EPC: C

Gross Internal Area: 248 Sq. metres  
2670 Sq. feet



### Lancaster Gate, W2

Approximate gross Internal area  
248.1 sq m / £13.11/Sq.Ft. p/m

This plan is for layout guidance only. Not drawn to scale unless stated. Windows and door openings approximate. Whilst every care is taken in the preparation of this plan, please check all dimensions, shapes and compass bearings before making decisions reliant upon them.

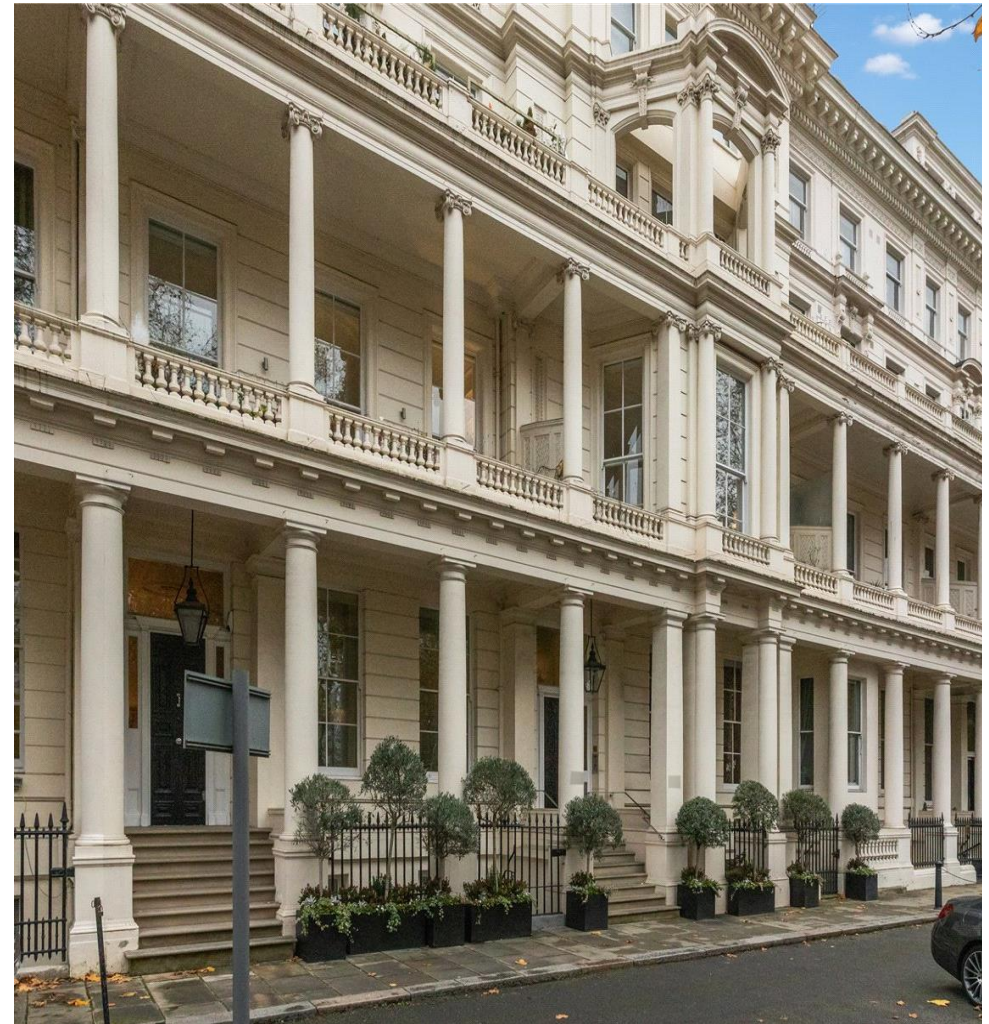


## Location

Ideally positioned in the prestigious Lancaster Gate area, this exceptional residence offers unparalleled access to the serene beauty of Hyde Park, one of London's most iconic green spaces, providing a perfect blend of nature and urban life. Beyond the park, residents will find themselves just a short distance from the vibrant and dynamic atmosphere of London's renowned West End, home to world-class theatres, shopping, and entertainment.

The location offers an array of exceptional amenities, including a wealth of esteemed restaurants, fashionable boutiques, and stylish bars that line the surrounding streets. The nearby Queensway area is renowned for its eclectic mix of shops and cultural offerings, while the Whiteleys complex, a historic shopping centre, provides a wide variety of retail options, dining experiences, and leisure activities.

For those who value convenience, this prime location is well-served by excellent transport links, with Lancaster Gate Underground Station (Central Line) just moments away, allowing quick and easy access to the heart of London and beyond. Whether for work or leisure, the accessibility of this location makes it an ideal base for those seeking the best of both worlds—peaceful green spaces and the excitement of city living.





Chestertons Hyde Park & Marylebone  
40 Connaught Street  
Hyde Park & Marylebone, London, W2

020 7298 5950  
Hydepark.info@chestertons.co.uk  
chestertons.co.uk

Chesterton Global Ltd trading as Chestertons for themselves and for the vendor of this property whose agents they are, give notice that (i) these particulars do not constitute any part of an offer or contract, (ii) all statements contained within these particulars are made without responsibility on the part of Chestertons or the vendor, (iii) whilst made in good faith, none of the statements contained within these particulars are to be relied upon as a statement or representation of fact, (iv) any intending purchasers must satisfy themselves by inspection or otherwise as to the correctness of each of the statements contained within these particulars, (v) the vendor does not make or give either Chestertons or any person in their employment any authority to make or give representation or warranty whatsoever in relation to this property. Wide angle lenses may be used. ©Copyright Chestertons | Chesterton Global Ltd | Registered Office 40 Connaught Street, Hyde Park, London W2 2AB Registered Company Number 05334580.

