



Marylebone Street  
Marylebone, W1

CHESTERTONS









Nestled in the vibrant heart of Marylebone Village, this delightful one-bedroom duplex flat offers a perfect blend of modern comfort and historic charm. Spanning the third and fourth floors, with convenient lift access, the property boasts a bright and airy atmosphere, thanks to the generous natural light that floods each room. The stylish, contemporary kitchen is fully equipped for modern living, while thoughtfully designed storage solutions maximize space and functionality.

Positioned just moments from the renowned Marylebone High Street, residents will enjoy a plethora of boutique shops, fashionable bars, and exquisite dining options.

For those seeking a tranquil escape, the expansive greenery of Regent's Park is just a short stroll away. Additionally, superb transport links are provided by nearby Bond Street, Oxford Circus, and Baker Street stations, ensuring seamless connections across the city.

- Available now
- One bedroom one bathroom
- 3rd floor with lift access
- Porter
- Lots of natural light
- Furnished

**£900 per week (£3,900 pcm)**

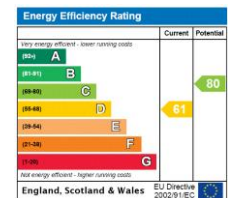
Additional tenant charges apply (fees apply to non-AST tenancies only)

Tenancy Agreement Fee: £300

References per Tenant/Guarantor: £60

Inventory check (approx. £100 – £250 inc. VAT)

[chestertons.co.uk/property-to-rent/applicable-fees](https://www.chestertons.co.uk/property-to-rent/applicable-fees)



**Minimum Term:** 12 months  
**Deposit Required:** £5,940.00  
**Local Authority:** Westminster  
**Council Tax Band:** E  
**EPC Rating:** D  
**Furnished**

*Chestertons Hyde Park & Marylebone Lettings*

40 Connaught Street  
 Hyde Park & Marylebone  
 London  
 W2 2AB

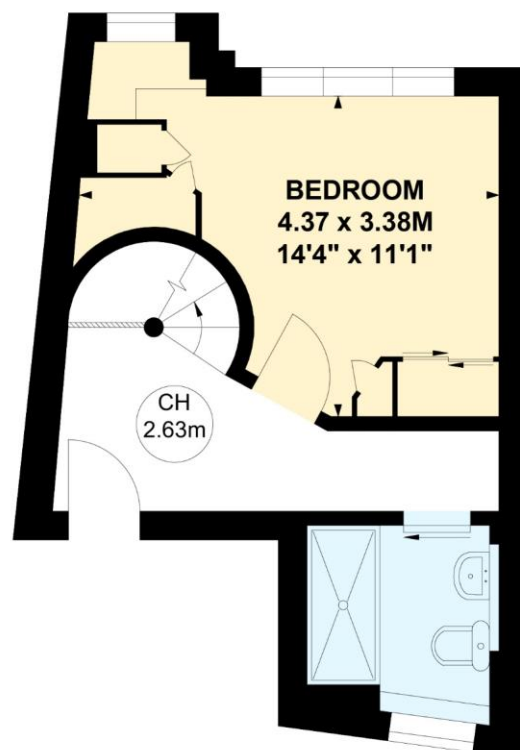
[hydepark@chestertons.co.uk](mailto:hydepark@chestertons.co.uk)

02072985950

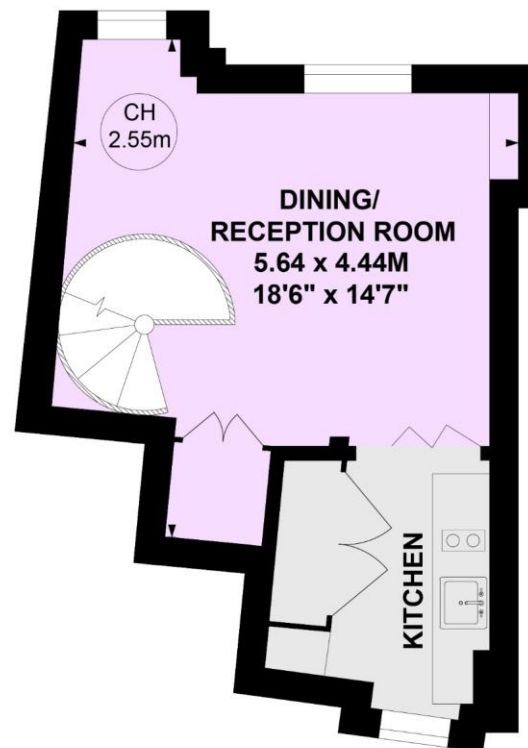
# Marylebone Street, W1G

Approximate gross internal area  
48.22 sq m / 519 sq ft

Key :  
CH - Ceiling Height



**Third Floor**



**Fourth Floor**

Not to scale, for guidance only and must not be relied upon as a statement of fact.  
All measurements and areas are approximate only

Chesterton Global Ltd trading as Chestertons for themselves and for the vendor of this property whose agents they are, give notice that (i) these particulars do not constitute any part of an offer or contract, (ii) all statements contained within these particulars are made without responsibility on the part of Chestertons or the vendor, (iii) whilst made in good faith, none of the statements contained within these particulars are to be relied upon as a statement or representation of fact, (iv) any intending purchasers must satisfy themselves by inspection or otherwise as to the correctness of each of the statements contained within these particulars, (v) the vendor does not make or give either Chestertons or any person in their employment any authority to make or give representation or warranty whatsoever in relation to this property. Wide angle lenses may be used. ©Copyright Chestertons | Chesterton Global Ltd | Registered Office 40 Connaught Street, Hyde Park, London W2 2AB Registered Company Number 05334580.

