



Clarewood Court
Marylebone, W1





A modern two bedroom apartment on the first floor of a mansion block in Marylebone. Recently refurbished to a high standard this property benefits from an open plan reception room, wooden flooring and a lift.

Seymour Place is moments from the boutique shops and restaurants of New Quebec Street and Marble Arch.

- Two Bedrooms
- One Bathroom
- Open-Plan Kitchen
- Wood Flooring
- Concierge
- Lift

£3,195 pcm

Additional tenant charges apply (fees apply to non-AST tenancies only)

Tenancy Agreement Fee: £300

References per Tenant/Guarantor: £60

Inventory check (approx. £100 – £250 inc. VAT)

chestertons.co.uk/property-to-rent/applicable-fees

Energy Efficiency Rating		
Very energy efficient - lower running costs	Current	Potential
90-100 A		82
81-90 B		
69-80 C	70	
55-68 D		
49-54 E		
45-48 F		
35-44 G		
Not energy efficient - higher running costs		
England, Scotland & Wales EU Directive 2002/91/EC		

Minimum Term:

6 months

Deposit Required:

Five weeks

Local Authority:

City of Westminster

Council Tax Band:

E

EPC Rating: C

Furnished

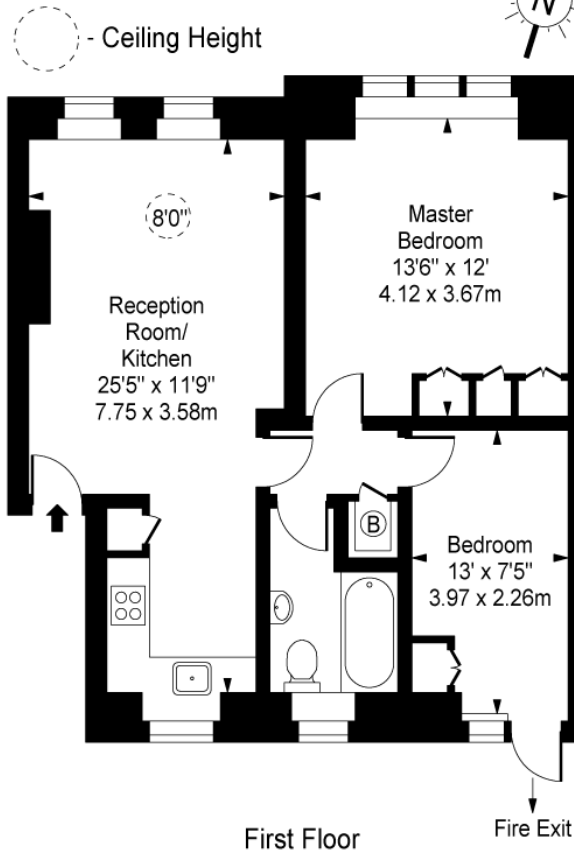
Chestertons Hyde Park & Marylebone Lettings

40 Connaught Street
Hyde Park & Marylebone
London
W2 2AB

hydeparklettingsusers@chestertons.co.uk

02072985950

**Clarewood Court,
Seymour Place, W1H**



Approx Gross Internal Area 622 Sq Ft - 57.78 Sq M

For Illustration Purposes Only - Not To Scale
www.goldlens.co.uk
 Ref. No. 015222AG

Chesterton UK Services Limited trading as Chestertons for themselves and for the vendor of this property whose agents they are, give notice that (i) these particulars do not constitute any part of an offer or contract, (ii) all statements contained within these particulars are made without responsibility on the part of Chestertons or the vendor, (iii) whilst made in good faith, none of the statements contained within these particulars are to be relied upon as a statement or representation of fact, (iv) any intending purchasers must satisfy themselves by inspection or otherwise as to the correctness of each of the statements contained within these particulars, (v) the vendor does not make or give either Chestertons or any person in their employment any authority to make or give representation or warranty whatsoever in relation to this property. Wide angle lenses may be used. ©Copyright Chestertons | Chesterton Global Ltd | Registered Office 40 Connaught Street, Hyde Park, London W2 2AB Registered Company Number 05334580.



This paper is
100% recyclable