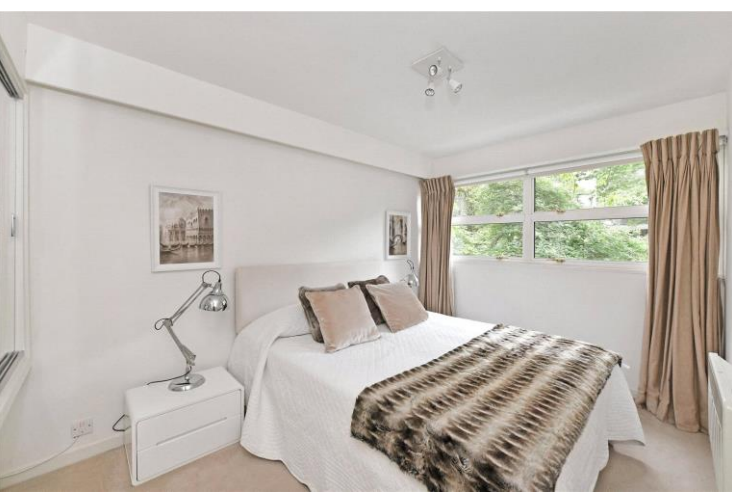




St. Georges Fields  
Hyde Park, W2

CHESTERTONS









Interior designed two bedroom apartment with a private balcony, access to communal gardens, and parking.

St. George's Fields is a quiet, secure and gated development in the heart of the Hyde Park Estate. Residents benefit from having private onsite parking, porterage and a communal garden.

This elegant apartment offers two double bedrooms, fully fitted kitchen, bathroom, and a reception room with a large balcony.

St. George's Fields is well located, residents have easy access to cafes, restaurants, shops and boutiques that Connaught Village has to offer. Hyde Park and Oxford Street are also nearby and within walking distance as well as Paddington Station and Marble Arch Underground Station. (Heathrow Express and London Underground Lines).

- Two bedrooms
- Balcony Leafy
- Communal Gardens
- Porterage
- Private Parking (by separate negotiation)

### £3,250 pcm

Additional tenant charges apply (fees apply to non-AST tenancies only)

Tenancy Agreement Fee: £300

References per Tenant/Guarantor: £60

Inventory check (approx. £100 – £250 inc. VAT)

[chestertons.co.uk/property-to-rent/applicable-fees](http://chestertons.co.uk/property-to-rent/applicable-fees)

Energy Efficiency Rating		
Energy efficient - lower running costs	Current	Potential
A (94-100)		
B (81-93)		
C (69-80)		
D (55-68)		
E (39-54)		
F (21-38)		
G (1-20)		
Not energy efficient - higher running costs		
England, Scotland & Wales	EU Directive 2002/91/EC	

**Minimum Term:** 12 months  
**Deposit Required:** Five weeks  
**Local Authority:** City of Westminster  
**Council Tax Band:** G  
**EPC Rating:** D  
**Furnished**

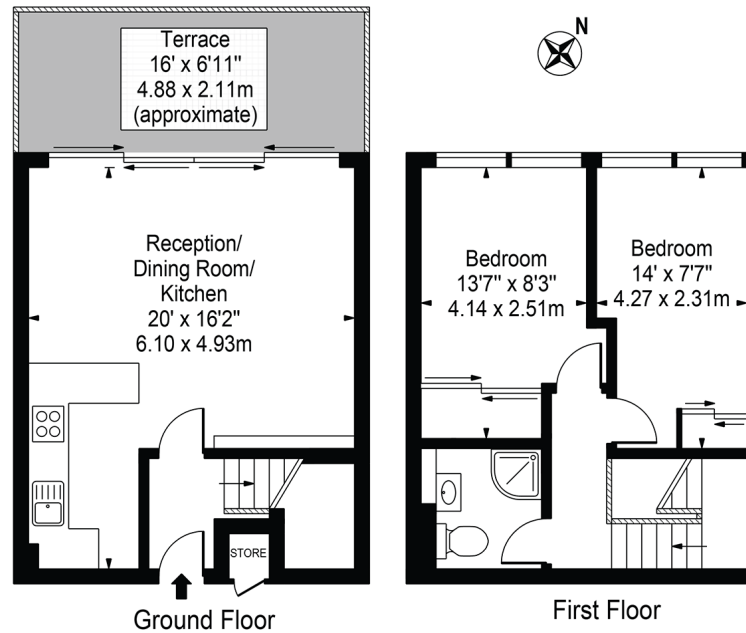
### Chestertons Hyde Park & Marylebone Lettings

40 Connaught Street  
 Hyde Park & Marylebone  
 London  
 W2 2AB

[hydeparklettingsusers@chestertons.co.uk](mailto:hydeparklettingsusers@chestertons.co.uk)  
 02072985950

## Archery Steps

Approx. Gross Internal Area 655 Sq Ft - 60.85 Sq M  
(Excluding Store)



For Illustration Purposes Only - Not To Scale

This floor plan should be used as a general outline for guidance only and does not constitute in whole or in part an offer or contract.  
Any intending purchaser or lessee should satisfy themselves by inspection, searches, enquiries and full survey as to the correctness of each statement.  
Any areas, measurements or distances quoted are approximate and should not be used to value a property or be the basis of any sale or let.

Chesterton UK Services Limited trading as Chestertons for themselves and for the vendor of this property whose agents they are, give notice that (i) these particulars do not constitute any part of an offer or contract, (ii) all statements contained within these particulars are made without responsibility on the part of Chestertons or the vendor, (iii) whilst made in good faith, none of the statements contained within these particulars are to be relied upon as a statement or representation of fact, (iv) any intending purchasers must satisfy themselves by inspection or otherwise as to the correctness of each of the statements contained within these particulars, (v) the vendor does not make or give either Chestertons or any person in their employment any authority to make or give representation or warranty whatsoever in relation to this property. Wide angle lenses may be used. ©Copyright Chestertons | Chesterton Global Ltd | Registered Office 40 Connaught Street, Hyde Park, London W2 2AB Registered Company Number 05334580.



This paper is  
100% recyclable