



Albion Street
Hyde Park, W2

CHESTERTONS





An immaculately presented family house with well proportioned accommodation arranged over four floors close to the wide open spaces of Hyde Park and the shopping and transport facilities of Marble Arch.

Fully furnished and equipped for a short letting, the house comprises a dining room opening on to a modern kitchen on the ground floor, a large double reception room on the first floor offering plenty of family and entertainment space. Master bedroom and a stunning large family bathroom situated on the second floor and further two double bedrooms on the top floor with a further bathroom.

The property further benefits a beautiful private south facing terrace, which is ideal to enjoy in the summer; and a separate guest bedroom and bathroom on the ground floor.

This house is ideal home for a family looking to spend summer holidays in London, being close to Hyde Park and all the amenities of Oxford Street and Connaught Village.

- Summer Short Let
- Four bedrooms and three bathrooms
- Two reception rooms
- South facing private terrace
- Close to Hyde Park, Connaught Village and Oxford Street

£16,000 pcm

Additional tenant charges apply (fees apply to non-AST tenancies only)

Tenancy Agreement Fee: £300

References per Tenant/Guarantor: £60

Inventory check (approx. £100 – £250 inc. VAT)

chestertons.co.uk/property-to-rent/applicable-fees

Energy Efficiency Rating		
Energy efficiency class	Current	Potential
A (94-100)		
B (81-93)		
C (69-80)		
D (55-68)		
E (39-54)		
F (21-38)		
G (1-20)		
Not energy efficient - higher running costs		
EU Directive 2002/91/EC		
England, Scotland & Wales		

Minimum Term: 1 months
Deposit Required: Six weeks
Local Authority: Westminster
Council Tax Band: F
EPC Rating: D
Furnished

Chestertons Hyde Park & Marylebone Lettings

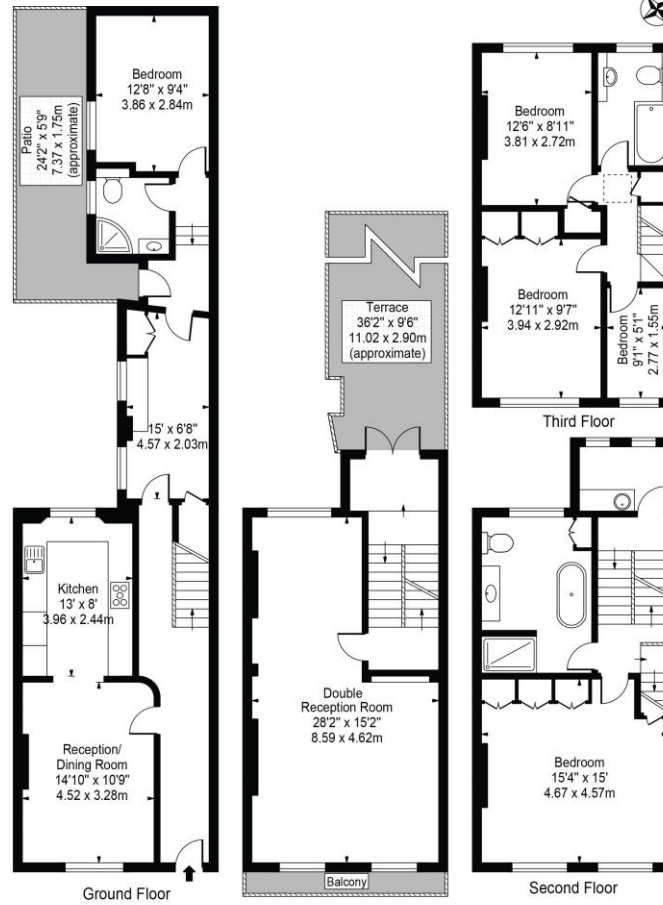
40 Connaught Street
 Hyde Park & Marylebone
 London
 W2 2AB

hydeparklettingsusers@chestertons.co.uk

02072985950

Albion Street

Approx. Gross Internal Area 2115 Sq Ft - 196.49 Sq M



For Illustration Purposes Only - Not To Scale

This floor plan should be used as a general outline for guidance only and does not constitute in whole or in part an offer or contract. Any intending purchaser or lessee should satisfy themselves by inspection, searches, enquiries and full survey as to the correctness of each statement. Any areas, measurements or distances quoted are approximate and should not be used to value a property or be the basis of any sale or let.

Chesterton UK Services Limited trading as Chestertons for themselves and for the vendor of this property whose agents they are, give notice that (i) these particulars do not constitute any part of an offer or contract, (ii) all statements contained within these particulars are made without responsibility on the part of Chestertons or the vendor, (iii) whilst made in good faith, none of the statements contained within these particulars are to be relied upon as a statement or representation of fact, (iv) any intending purchasers must satisfy themselves by inspection or otherwise as to the correctness of each of the statements contained within these particulars, (v) the vendor does not make or give either Chestertons or any person in their employment any authority to make or give representation or warranty whatsoever in relation to this property. Wide angle lenses may be used. ©Copyright Chestertons | Chesterton Global Ltd | Registered Office 40 Connaught Street, Hyde Park, London W2 2AB Registered Company Number 05334580.

