



Mandeville Place
Marylebone, W1

CHESTERTONS





This impeccably presented and exceptionally spacious lateral two-bedroom and two bathroom apartment is ideally located in the prestigious heart of Marylebone.

The residence boasts an elegant double reception room, complete with a refined dining area, and a separate, fully equipped kitchen that epitomizes both style and functionality.

With soaring ceilings throughout, the property exudes a sense of openness and natural light. The expansive master bedroom is complemented by a en-suite bathroom, while the second well-proportioned bedroom offers both comfort and versatility.

Perfectly positioned just moments from the renowned Marylebone High Street, this distinguished apartment offers unparalleled access to the finest dining on James Street and world-class shopping on Oxford Street, ensuring an enviable lifestyle in one of London's most coveted locations.

- Two bedroom and two bathroom
- Wood flooring & high ceilings
- Pet friendly
- Lift
- Separate kitchen and dining area
- Superbly located In The Marylebone Village

£1,150 p/w

Additional tenant charges apply (fees apply to non-AST tenancies only)

Tenancy Agreement Fee: £300

References per Tenant/Guarantor: £60

Inventory check (approx. £100 – £250 inc. VAT)

chestertons.co.uk/property-to-rent/applicable-fees

Energy Efficiency Rating		
Energy efficient - lower running costs	Current	Potential
90-100 A		82
81-90 B		
69-80 C	69	
55-68 D		
49-54 E		
45-48 F		
35-44 G		
Not energy efficient - higher running costs		
England, Scotland & Wales EU Directive 2002/91/EC		

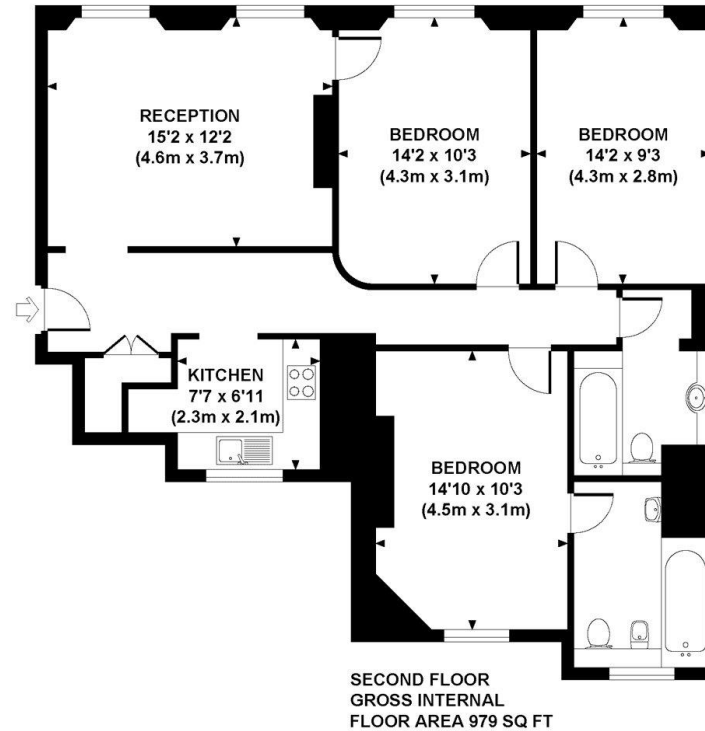
Minimum Term: 12 months
Deposit Required: Five weeks
Local Authority: Westminster City Council
Council Tax Band: G
EPC Rating: C
Unfurnished

Chestertons Hyde Park & Marylebone Lettings

40 Connaught Street
 Hyde Park & Marylebone
 London
 W2 2AB

hydeparklettingsusers@chestertons.co.uk
 02072985950

MANDEVILLE PLACE
Approximate Gross Internal Area 979 sq ft / 91.0 sq m



Although every attempt has been made to ensure accuracy, all measurements are approximate.
The floor plan's for illustrative purposes only and not to scale. Measured in accordance to RICS standards.
DE-PHOTOGRAPHY.NET

Chesterton UK Services Limited trading as Chestertons for themselves and for the vendor of this property whose agents they are, give notice that (i) these particulars do not constitute any part of an offer or contract, (ii) all statements contained within these particulars are made without responsibility on the part of Chestertons or the vendor, (iii) whilst made in good faith, none of the statements contained within these particulars are to be relied upon as a statement or representation of fact, (iv) any intending purchasers must satisfy themselves by inspection or otherwise as to the correctness of each of the statements contained within these particulars, (v) the vendor does not make or give either Chestertons or any person in their employment any authority to make or give representation or warranty whatsoever in relation to this property. Wide angle lenses may be used. ©Copyright Chestertons | Chesterton Global Ltd | Registered Office 40 Connaught Street, Hyde Park, London W2 2AB Registered Company Number 05334580.



This paper is
100% recyclable