



Meridien House
Marble Arch, W1





A spacious two double bedroom apartment within a well maintained block.

This spacious apartment is on the fifth floor and comprises two bedrooms, separate kitchen, two bathrooms, and a living room with access to a balcony.

The development further benefits from porter and is only moments away to variety of shops, bars and restaurants. Hyde Park, Marylebone High Street and Oxford Street are a walk away.

- Two double bedrooms
- Two bathrooms
- Separate kitchen
- Flooded with natural light
- Lift
- Porter

£3,000 pcm

Additional tenant charges apply (fees apply to non-AST tenancies only)

Tenancy Agreement Fee: £300

References per Tenant/Guarantor: £60

Inventory check (approx. £100 – £250 inc. VAT)

chestertons.co.uk/property-to-rent/applicable-fees

Energy Efficiency Rating		Current	Potential
92-100	A		
81-91	B		
69-80	C	78	79
55-68	D		
39-54	E		
21-38	F		
1-20	G		

Not energy efficient - higher running costs

EU Directive 2002/91/EC

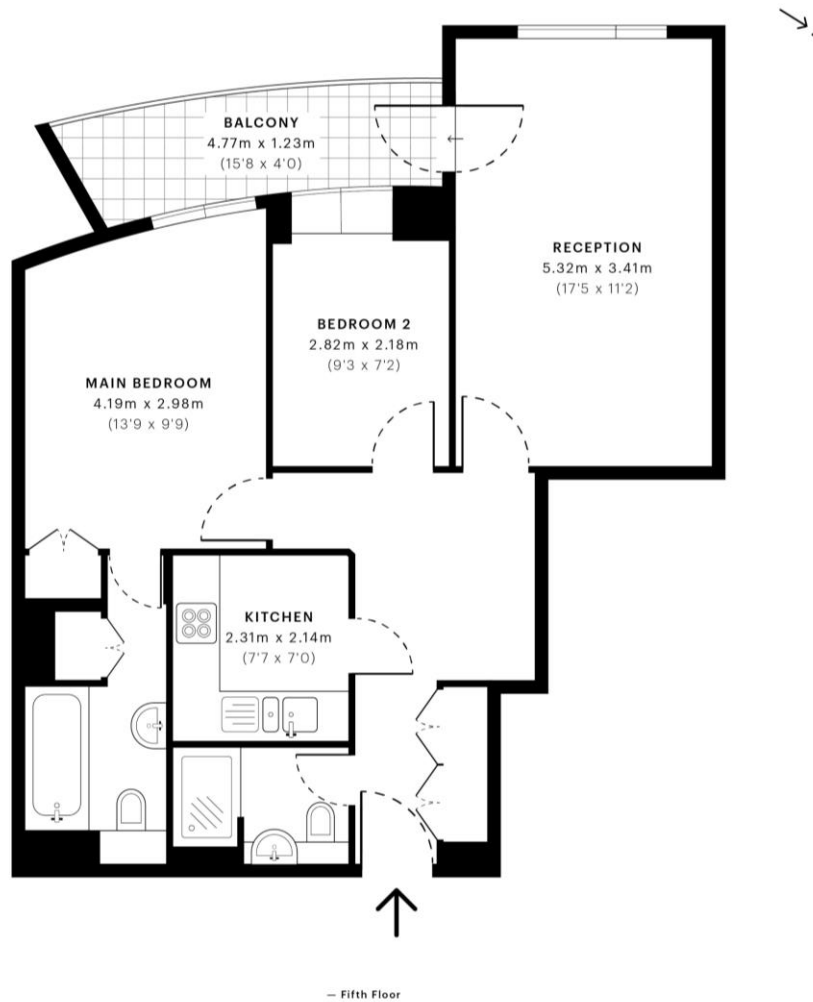
England, Scotland & Wales

Minimum Term: 6 months
Deposit Required: Five weeks
Local Authority: City of Westminster
Council Tax Band: D
EPC Rating: C
Furnished, Part Furnished

Chestertons Hyde Park & Marylebone Lettings

40 Connaught Street
 Hyde Park & Marylebone
 London
 W2 2AB

hydeparklettingsusers@chestertons.co.uk
 02072985950



Chesterton UK Services Limited trading as Chestertons for themselves and for the vendor of this property whose agents they are, give notice that (i) these particulars do not constitute any part of an offer or contract, (ii) all statements contained within these particulars are made without responsibility on the part of Chestertons or the vendor, (iii) whilst made in good faith, none of the statements contained within these particulars are to be relied upon as a statement or representation of fact, (iv) any intending purchasers must satisfy themselves by inspection or otherwise as to the correctness of each of the statements contained within these particulars, (v) the vendor does not make or give either Chestertons or any person in their employment any authority to make or give representation or warranty whatsoever in relation to this property. Wide angle lenses may be used. ©Copyright Chestertons | Chesterton Global Ltd | Registered Office 40 Connaught Street, Hyde Park, London W2 2AB Registered Company Number 05334580.

