



Weymouth Street
London, W1W

CHESTERTONS





A modern and well presented apartment in an award winning designed building which has a stunning brass-clad exterior to the rear. The beautiful wide open spaces of Regent's Park are also in the immediate vicinity. (photos are for style purposes only)

- Modern Lateral & Interior Designed Flat
- Reception, Kitchen, 3 Bedrooms, 2 Bath
- Benefits From Lift & On Site Day Porter
- Close To Marylebone High Street

£1,550 per week (£6,716.67 pcm)

Additional tenant charges apply (fees apply to non-AST tenancies only)

Tenancy Agreement Fee: £300

References per Tenant/Guarantor: £60

Inventory check (approx. £100 – £250 inc. VAT)

[chestertons.com/property-to-rent/applicable-fees](https://www.chestertons.com/property-to-rent/applicable-fees)

Energy Efficiency Rating		Current	Potential
100-90	A		
89-81	B		
80-65	C	78	81
55-48	D		
44-38	E		
35-29	F		
1-10	G		

Not energy efficient - higher running costs

England, Scotland & Wales EU Directive 2002/91/EC

Tenure: To be advised

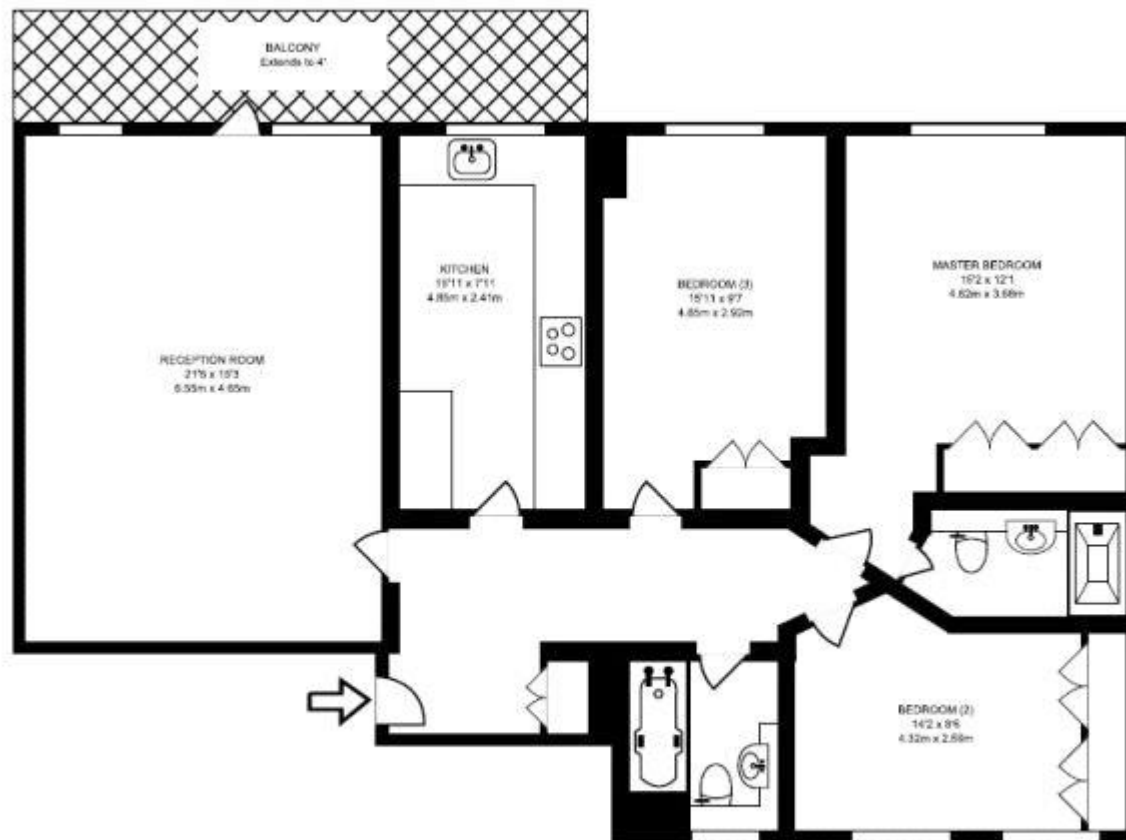
Furnished

Chestertons Hyde Park & Marylebone Lettings

40 Connaught Street
Hyde Park & Marylebone
London
W2 2AB

lettings.hydepark@chestertons.com

02072985950



THIRD FLOOR
1,201 SQ FT/111.67 SQ M

Chesterton Global Ltd trading as Chestertons for themselves and for the vendor of this property whose agents they are, give notice that (i) these particulars do not constitute any part of an offer or contract, (ii) all statements contained within these particulars are made without responsibility on the part of Chestertons or the vendor, (iii) whilst made in good faith, none of the statements contained within these particulars are to be relied upon as a statement or representation of fact, (iv) any intending purchasers must satisfy themselves by inspection or otherwise as to the correctness of each of the statements contained within these particulars, (v) the vendor does not make or give either Chestertons or any person in their employment any authority to make or give representation or warranty whatsoever in relation to this property. Wide angle lenses may be used. ©Copyright Chestertons | Chesterton Global Ltd | Registered Office 40 Connaught Street, Hyde Park, London W2 2AB Registered Company Number 05334580.