



Mortimer Street

London, W1W

£750 per week

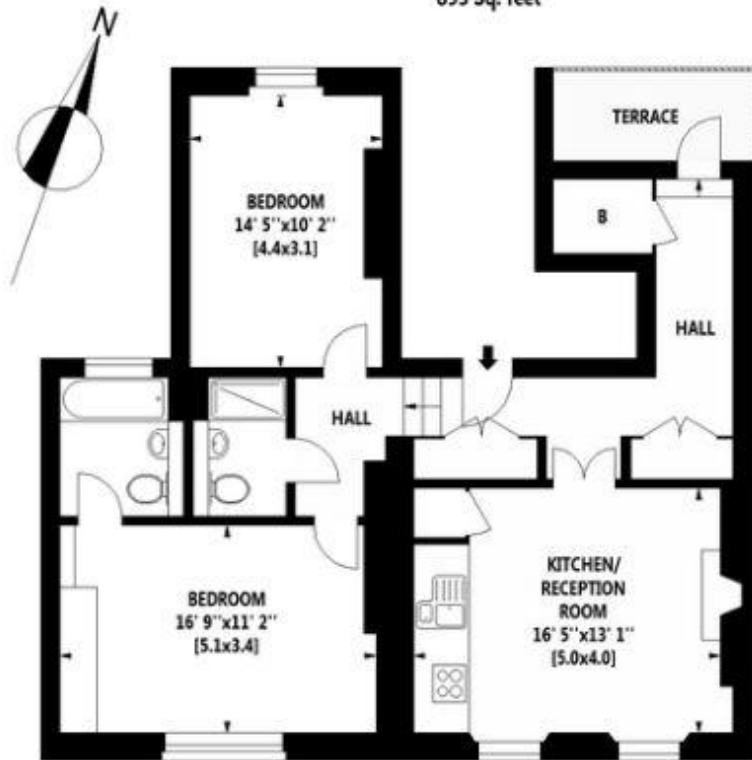
(£3,250 pcm)

A Bright third floor apartment finished to an excellent standard with access to a private balcony. The property comprises master bedroom with en suite shower room, second double bedroom, one shower room, reception room with open plan kitchen

CHESTERTONS

MORTIMER STREET, W1

Gross Internal Area: 83 Sq. metres
893 Sq. feet



THIRD FLOOR

Measurements taken from architects plans

Illustration for identification purposes only, not to scale.
All measurements and areas are approximate, and include wardrobes and window bays where appropriate.
This Floorplan has been prepared in accordance with the current edition of the RICS code of measuring practice.

Tenure: Long Let

Furnished

Additional tenant charges apply (fees apply to non-AST tenancies only)

Tenancy Agreement Fee: £300

References per Tenant/Guarantor: £60

Inventory check (approx. £100 – £250 inc. VAT)

chestertons.com/property-to-rent/applicable-fees

Energy Efficiency Rating		Current	Potential
Very energy efficient - lower running costs			
(92+)	A		
(81-91)	B		
(69-80)	C	81	81
(55-68)	D		
(38-54)	E		
(21-38)	F		
(1-20)	G		
Not energy efficient - higher running costs			
England, Scotland & Wales		EU Directive 2002/91/EC	

Chestertons Hyde Park Lettings

40 Connaught Street

Hyde Park & Marylebone

London

W2 2AB

lettings.hydepark@chestertons.com

02072985950

Chesterton Global Ltd trading as Chestertons for themselves and for the vendor of this property whose agents they are, give notice that (i) these particulars do not constitute any part of an offer or contract, (ii) all statements contained within these particulars are made without responsibility on the part of Chestertons or the vendor, (iii) whilst made in good faith, none of the statements contained within these particulars are to be relied upon as a statement or representation of fact, (iv) any intending purchasers must satisfy themselves by inspection or otherwise as to the correctness of each of the statements contained within these particulars, (v) the vendor does not make or give either Chestertons or any person in their employment any authority to make or give representation or warranty whatsoever in relation to this property. Wide angle lenses may be used. ©Copyright Chestertons | Chesterton Global Ltd | Registered Office 40 Connaught Street, Hyde Park, London W2 2AB Registered Company Number 05334580.



This paper is 100% recyclable