



Devonport, Southwick Street,
Hyde Park, W2

CHESTERTONS





Light and well-presented one-bedroom one-bathroom flat located in a popular new build block in central Hyde Park with porter and lift. The flat is neutral throughout, has laminate flooring and very good storage.

- Spacious one bedroom apartment
- Separate kitchen
- 24 hour porter
- Communal gardens
- Close to Marble Arch and Paddington stations

£2,500 pcm

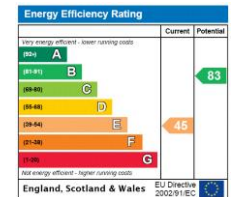
Additional tenant charges apply (fees apply to non-AST tenancies only)

Tenancy Agreement Fee: £300

References per Tenant/Guarantor: £60

Inventory check (approx. £100 – £250 inc. VAT)

chestertons.co.uk/property-to-rent/applicable-fees



Minimum Term: 12 months
Deposit Required: 5 weeks
Local Authority: Westminster
Council Tax Band: E
EPC Rating: E
Furnished

Chestertons Hyde Park & Marylebone Lettings

40 Connaught Street
 Hyde Park & Marylebone
 London
 W2 2AB

hydepark@chestertons.co.uk

02072985950

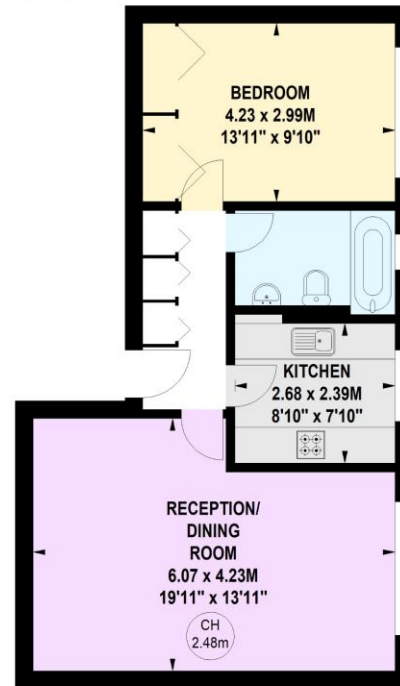
chestertons.co.uk

**Devonport,
Southwick Street,
Hyde Park, W2**

Approximate gross internal area

54.16 sq m / 583 sq ft

Key :
CH - Ceiling Height



Third Floor

Not to scale, for guidance only and must not be relied upon as a statement of fact.
All measurements and areas are approximate only

Chesterton Global Ltd trading as Chestertons for themselves and for the vendor of this property whose agents they are, give notice that (i) these particulars do not constitute any part of an offer or contract, (ii) all statements contained within these particulars are made without responsibility on the part of Chestertons or the vendor, (iii) whilst made in good faith, none of the statements contained within these particulars are to be relied upon as a statement or representation of fact, (iv) any intending purchasers must satisfy themselves by inspection or otherwise as to the correctness of each of the statements contained within these particulars, (v) the vendor does not make or give either Chestertons or any person in their employment any authority to make or give representation or warranty whatsoever in relation to this property. Wide angle lenses may be used. ©Copyright Chestertons | Chesterton Global Ltd | Registered Office 40 Connaught Street, Hyde Park, London W2 2AB Registered Company Number 05334580.



This paper is
100% recyclable