



# Portsea Hall

Portsea Place, W2

£3,000 per month  
(£692.31 per week)

Finished to a high standard is this 1st floor 2 bed apartment within a 24 hour portered building convenient for Marble Arch tube. Comprising reception, separate kitchen, 2 double bedrooms, shower room, wooden flooring and good storage.





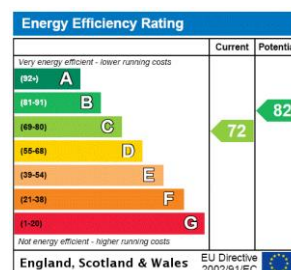
**Portsea Hall**  
Portsea Place, W2





Finished to a high standard is this 1st floor 2 bed apartment within a 24 hour portered building convenient for Marble Arch tube. Comprising reception, separate kitchen, 2 double bedrooms, shower room, wooden flooring and good storage.

**Minimum Term:** 12 months  
**Deposit Required:** £3,461.54  
**Local Authority:** City of Westminster  
**Council Tax Band:** D  
**EPC Rating:** C  
**Furnished, Part Furnished**



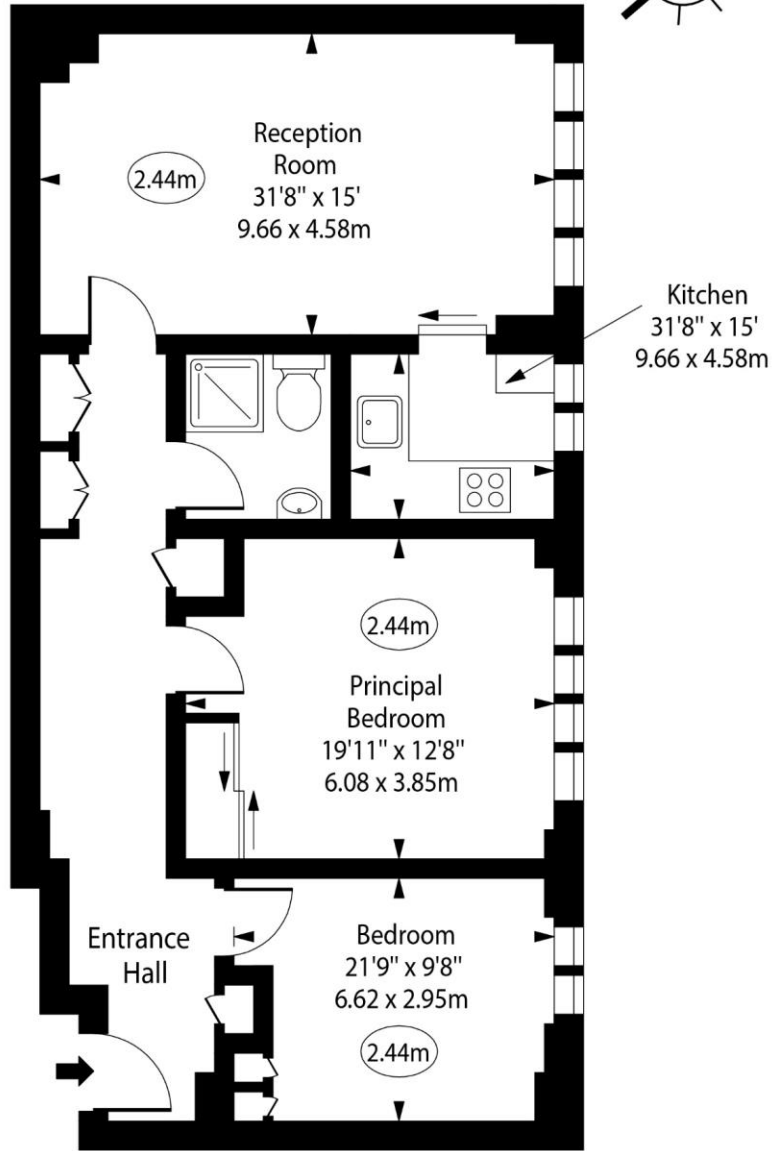
### *Chestertons Hyde Park & Marylebone Lettings*

40 Connaught Street  
 Hyde Park & Marylebone  
 London  
 W2 2AB  
 hydepark@chestertons.co.uk  
 02072985950  
 chestertons.co.uk

Additional tenant charges apply (fees apply to non-AST tenancies only)  
 Tenancy Agreement Fee: £300  
 References per Tenant/Guarantor: £60  
 Inventory check (approx. £100 – £250 inc. VAT)  
 chestertons.co.uk/property-to-rent/applicable-fees

# Portsea Hall, Portsea Place, W2

○ - Ceiling Height



First Floor

Approx Gross Internal Area      622 Sq Ft - 57.78 Sq M

For Illustration Purposes Only - Not To Scale

[www.goldlens.co.uk](http://www.goldlens.co.uk)

Ref. No. 017904R

