



Gloucester Square  
Hyde Park W2

CHESTERTONS





## SHORT LET

A beautifully presented two bedroom apartment arranged on the raised ground floor of this well-kept period conversion.

The property retains many period features throughout and comprises a spacious reception room benefiting from high ceilings and fireplace feature, fully integrated kitchen fitted with AEG appliances, master bedroom benefiting from an en-suite bathroom and mezzanine sleeping area, further double bedroom fitted with wardrobes and en-suite shower room and guest WC.

- Grand Raised Ground Floor Apartment
- Two-Bedrooms, Two-Bathrooms, Reception, Fitted Kitchen
- Period Features Throughout, Communal Gardens, Guest WC
- Desirable Location in Hyde Park

### £7,000 pcm

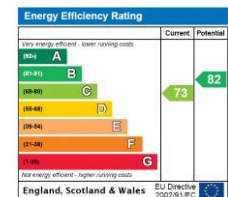
Additional tenant charges apply (fees apply to non-AST tenancies only)

Tenancy Agreement Fee: £300

References per Tenant/Guarantor: £60

Inventory check (approx. £100 – £250 inc. VAT)

[chestertons.co.uk/property-to-rent/applicable-fees](http://chestertons.co.uk/property-to-rent/applicable-fees)



**Minimum Term:** months  
**Deposit Required:** months  
**Local Authority:** Westminster  
**Council Tax Band:** G  
**EPC Rating:** C  
**Part Furnished**

### Chestertons Hyde Park & Marylebone Lettings

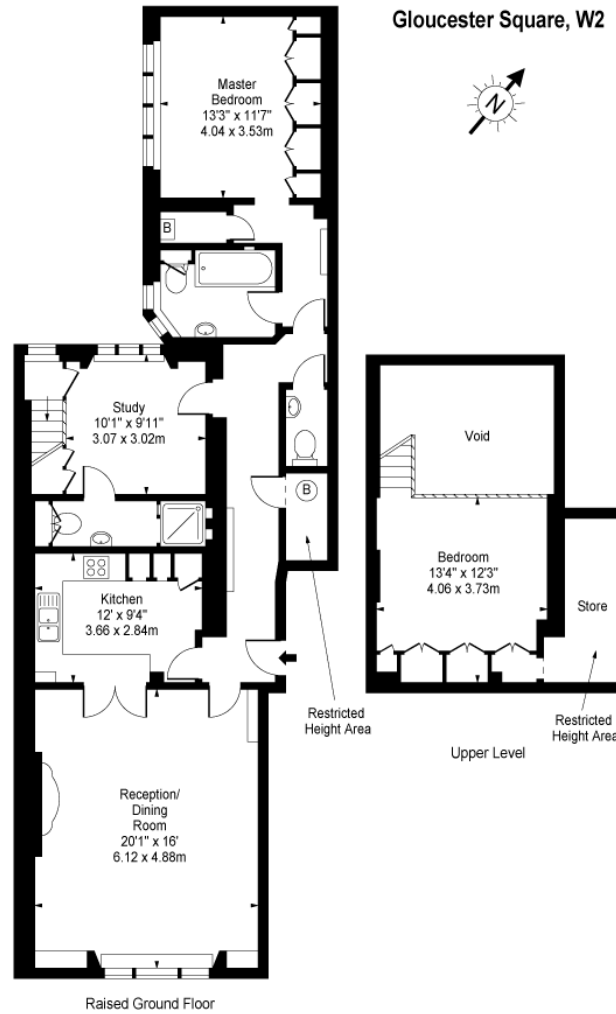
40 Connaught Street  
 Hyde Park & Marylebone  
 London  
 W2 2AB

[hydepark@chestertons.co.uk](mailto:hydepark@chestertons.co.uk)

02072985950

[chestertons.co.uk](http://chestertons.co.uk)

Gloucester Square, W2



Approx Gross Internal Area 1300 Sq Ft - 120.77 Sq M  
(Including Restricted Height Area)

For Illustration Purposes Only - Not To Scale  
www.goldlens.co.uk  
Ref. No. 002715

Chesterton Global Ltd trading as Chestertons for themselves and for the vendor of this property whose agents they are, give notice that (i) these particulars do not constitute any part of an offer or contract, (ii) all statements contained within these particulars are made without responsibility on the part of Chestertons or the vendor, (iii) whilst made in good faith, none of the statements contained within these particulars are to be relied upon as a statement or representation of fact, (iv) any intending purchasers must satisfy themselves by inspection or otherwise as to the correctness of each of the statements contained within these particulars, (v) the vendor does not make or give either Chestertons or any person in their employment any authority to make or give representation or warranty whatsoever in relation to this property. Wide angle lenses may be used. ©Copyright Chestertons | Chesterton Global Ltd | Registered Office 40 Connaught Street, Hyde Park, London W2 2AB Registered Company Number 05334580.



This paper is  
100% recyclable