



Hyde Park Street
London, W2

CHESTERTONS





A exquisite family home to rent situated in a sought after location near Hyde Park and Connaught Village. The property benefits from a double garage, ample storage and beautiful cornicing.

The accommodation is arranged over four floors and comprises lower ground: double bedroom with fitted wardrobes, modern shower room, double garage for two cars and plenty of built-in storage. Ground floor: grand hallway with cloakroom, front reception leading onto a fully integrated kitchen with Siemens appliances and guest w/c. First floor: master bedroom with fitted wardrobes and en-suite bathroom and a formal reception with access onto a small balcony. Second floor: three further double bedrooms and stylish shower room.

- An Immaculate Modern Townhouse
- 5 Bedrooms, 3 Bathrooms, 2 Receptions, Modern Fitted Kitchen
- Wood Floors, Double Garage, Guest w/c, Storage
- Sought After Location in Hyde Park & Connaught Village

£12,000 pcm

Additional tenant charges apply (fees apply to non-AST tenancies only)

Tenancy Agreement Fee: £360

References per Tenant/Guarantor: £60

Inventory check (approx. £100 – £250 inc. VAT)

chestertons.co.uk/property-to-rent/applicable-fees

Energy Efficiency Rating		
Energy efficiency class (lower is better)	Current	Potential
92-100 A		
81-91 B		
69-80 C		
55-68 D		
49-54 E		
45-48 F		
35-39 G		
Not energy efficient - higher running costs		
EU Directive 2002/91/EC		
England, Scotland & Wales		

Minimum Term: 6 months
Deposit Required: £16,615.38
Local Authority: City Of Westminster
Council Tax Band: H
EPC Rating: D
Unfurnished

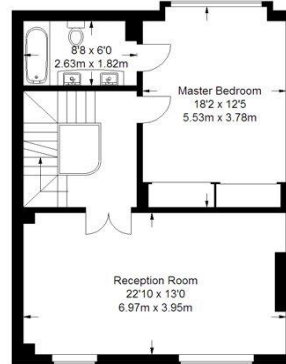
Chestertons Hyde Park & Marylebone Lettings

40 Connaught Street
 Hyde Park & Marylebone
 London
 W2 2AB

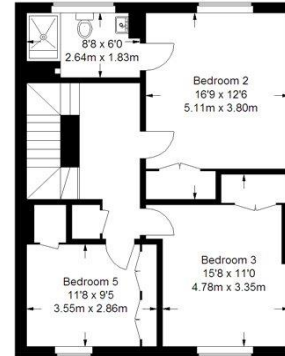
hydepark@chestertons.co.uk
 02072985950

Hyde Park Street

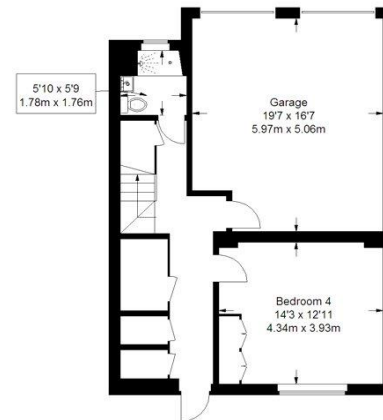
Approximate Gross Internal Area
2837 sq ft / 263.6 sq m



First Floor = 707 sq ft / 65.7 sq m



Second Floor = 695 sq ft / 64.6 sq m



Lower Ground Floor
(Including Garage)
746 sq ft / 69.3 sq m



Raised Ground Floor
689 sq ft / 64 sq m

Illustration for identification purposes only, measurements are approximate, not to scale.

Chesterton Global Ltd trading as Chestertons for themselves and for the vendor of this property whose agents they are, give notice that (i) these particulars do not constitute any part of an offer or contract, (ii) all statements contained within these particulars are made without responsibility on the part of Chestertons or the vendor, (iii) whilst made in good faith, none of the statements contained within these particulars are to be relied upon as a statement or representation of fact, (iv) any intending purchasers must satisfy themselves by inspection or otherwise as to the correctness of each of the statements contained within these particulars, (v) the vendor does not make or give either Chestertons or any person in their employment any authority to make or give representation or warranty whatsoever in relation to this property. Wide angle lenses may be used. ©Copyright Chestertons | Chesterton Global Ltd | Registered Office 40 Connaught Street, Hyde Park, London W2 2AB Registered Company Number 05334580.



This paper is
100% recyclable