

White & Brooks

BOGNOR REGIS

£330,000

Meaden Way • Felpham • West Sussex

“Mid-Terraced Town House”



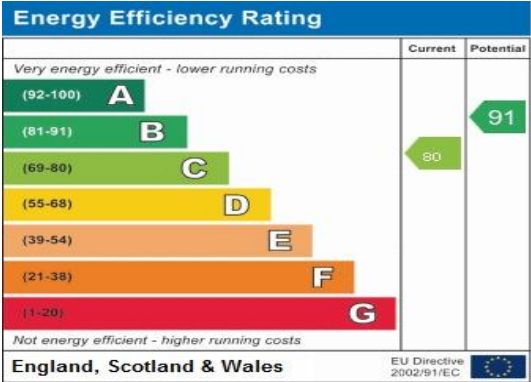
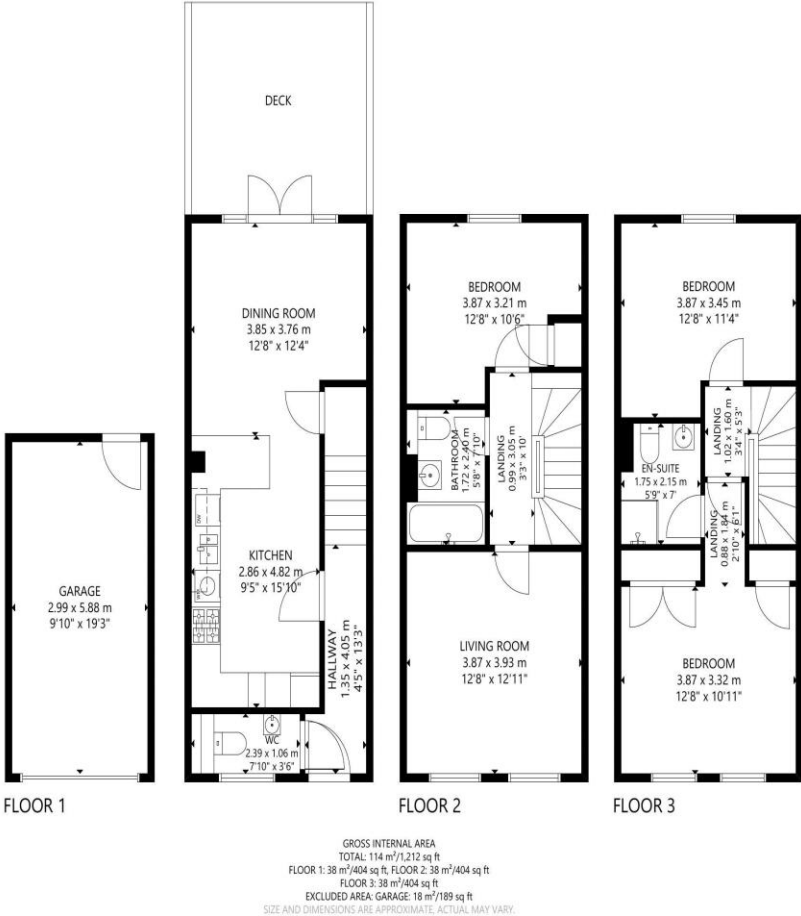
- ❖ Well Presented
- ❖ Situated In The Sought After Area Of Felpham
- ❖ 3 Double Bedrooms
- ❖ Lounge With 2 Juliet Balconies
- ❖ Spacious Kitchen/Diner
- ❖ En-Suite Shower Room To Primary Bedroom
- ❖ Family Bathroom
- ❖ Enclosed Rear Garden With Decking Area
- ❖ Garage

About The Property

White & Brooks are delighted to offer for sale, this Immaculately presented, mid-terraced town house, situated in the sought after area of Felpham, close to local shops, schools, parks and amenities. The accommodation briefly comprises to the ground floor, Entrance Hall, spacious Kitchen/Diner and Cloakroom. To the first floor is the Lounge to the front of the property with two Juliet Balconies, a double Bedroom and family Bathroom and to the second floor are a further two double Bedrooms with an En-Suite Shower Room to the Primary Bedroom. The property further benefits from an enclosed rear garden with decking area, garage and double glazing throughout. An internal viewing is highly recommended to appreciate all the property has to offer.



Floorplan and EPC



White & Brooks

BOGNOR REGIS

Room Details

Entrance Hall

Cloakroom 7' 10" x 3' 6" (2.39m x 1.07m)

Kitchen 9' 5" x 15' 10" (2.87m x 4.82m)

Dining Room 12' 8" x 12' 4" (3.86m x 3.76m)

Stairs To:-

First Floor Landing

Living Room 12' 8" x 12' 11" (3.86m x 3.93m)

Family Bathroom 5' 8" x 7' 10" (1.73m x 2.39m)

Bedroom 3 12' 8" x 10' 6" (3.86m x 3.20m)

Stairs To:-

Second Floor Landing

Bedroom 1 12' 8" x 10' 11" (3.86m x 3.32m)

En-Suite Shower Room 5' 9" x 7' 0" (1.75m x 2.13m)

Bedroom 2 12' 8" x 11' 4" (3.86m x 3.45m)

Garage 9' 10" x 19' 3" (2.99m x 5.86m)

Enclosed Rear Garden

