

# AVENS

The perfect home for modern living, the Avens is a compact, two-bedroom, two-storey home.

73 sq m (786 sq ft)

CHILMINGTON

RISE

KENT

ASHFORD KENT TN23 3DN

[www.chilmington-rise.co.uk](http://www.chilmington-rise.co.uk)

Connells

# AVENS

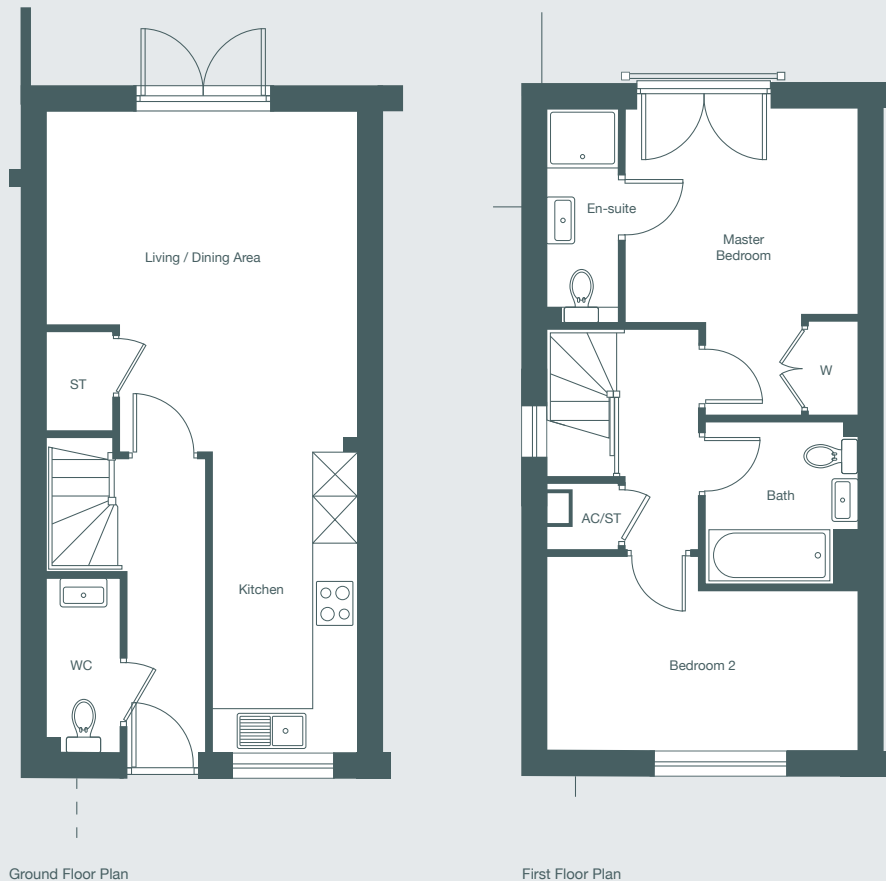
The perfect home for modern living, the Avens is a compact, two-bedroom, two-storey home.

Allocation of garages, carports and off-road parking differs from plot to plot. For more information, please speak to the sales team.

**73 sq m (786 sq ft)**

The ground floor hallway leads to the kitchen/living/dining area which occupies the whole of the ground floor. To the rear of the house double doors lead to the patio and garden.

The first floor features an impressive master bedroom with en-suite and two double doors opening up to a lovely Juliet balcony. Here you will also find the second bedroom and the family bathroom.



## GROUND FLOOR

### Living / Dining Area

4.58m max x 4.22m max 15'0" max x 13'0" max

### Kitchen

4.08m x 1.94m 13'5" x 6'4"

## FIRST FLOOR

### Master Bedroom with en-suite

3.11m x 2.87m 10'2" x 9'5"

### Bedroom 2

4.22m x 2.16m 13'10" x 7'1"

Each set of floor plans may be reproduced at a different scale to others within the brochure. Floor plans, dimensions and CGI illustrations are indicative only and can be liable to change during construction. Please check with the sales agent if you require further information.



## Sales Suite

Open Daily  
Monday to Sunday 10am-5pm

## Telephone

01233 622 206  
01233 502 020

**AVENS**  
Plot 53, 54.