

for sale

guide price **£500,000**



## Bluebell Close Kingsnorth Ashford TN23 3NG

A beautifully extended four bedroom family home in Kingsnorth's popular Park Farm development. Finished to show-home standards, this property boasts a stunning kitchen/diner with bi-fold doors, landscaped garden, utility room, and stylish bath suite ideal for modern family living.





# Bluebell Close Kingsnorth Ashford TN23 3NG

## Cloakroom

## Lounge

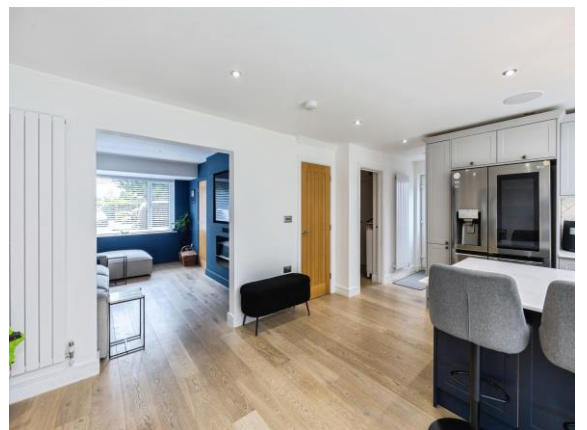
14' 4" x 10' 2" ( 4.37m x 3.10m )

## Kitchen/Diner

22' 10" x 18' 10" ( 6.96m x 5.74m )

## Utility Room

6' 7" x 6' ( 2.01m x 1.83m )



## First Floor

### Bedroom 1

12' 3" x 11' 2" ( 3.73m x 3.40m )

### En-Suite

### Bedroom 2

12' 3" x 8' 8" ( 3.73m x 2.64m )

### Bedroom 3

8' 9" x 7' 9" ( 2.67m x 2.36m )

### Bedroom 4

8' 9" x 6' 3" ( 2.67m x 1.91m )

### Bathroom

## Outside

### Driveway

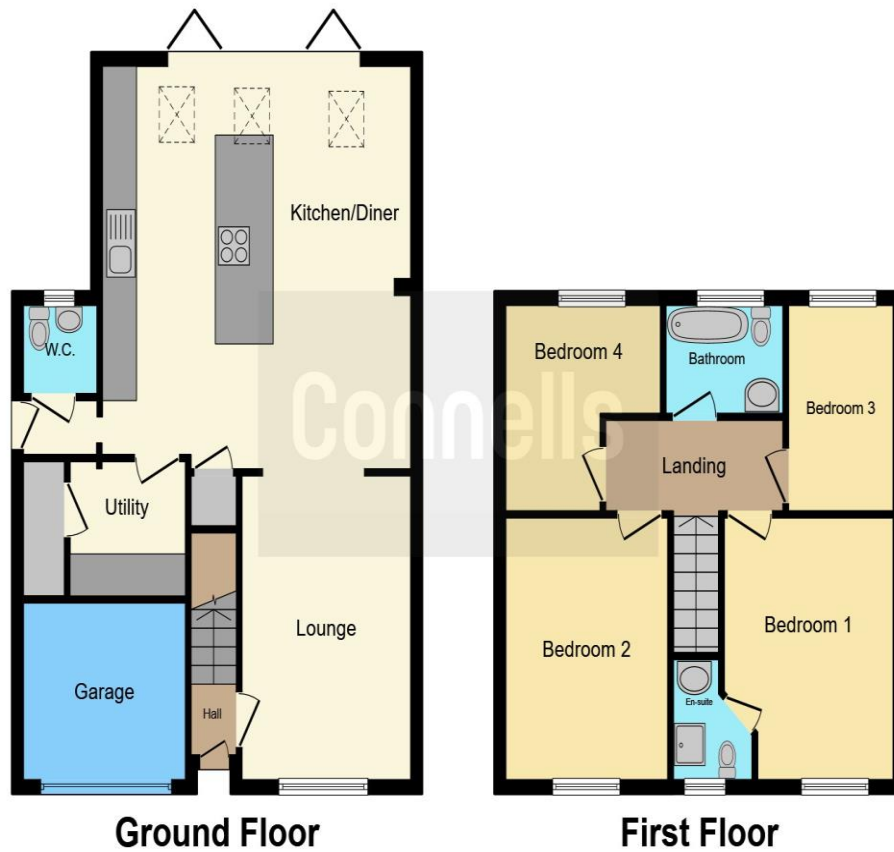
### Rear Garden

### Agents Note

'We have been advised by the Vendor that planning permission and Building Regulation Certification was obtained for the rear extension and garage conversion'







This floor plan is for illustrative purposes only. It is not drawn to scale. Any measurements, floor areas (including any total floor area), openings and orientation are approximate. No details are guaranteed, they cannot be relied upon for any purpose and they do not form part of any agreement. No liability is taken for any error, omission or misstatement. A party must rely upon its own inspection(s). Powered by [www.focalagent.com](http://www.focalagent.com)

To view this property please contact Connells on

**T 01233 502020**  
**E [parkfarm@connells.co.uk](mailto:parkfarm@connells.co.uk)**

Unit 3 Moatfield Meadow Kingsnorth  
 ASHFORD TN23 3LU

Property Ref: PFM406294 - 0004

Tenure: Freehold EPC Rating: C

Council Tax Band: E

**view this property online [connells.co.uk/Property/PFM406294](http://connells.co.uk/Property/PFM406294)**



1. MONEY LAUNDERING REGULATIONS Intending purchasers will be asked to produce identification documentation at a later stage and we would ask for your co-operation in order that there will be no delay in agreeing the sale. 2. These particulars do not constitute part or all of an offer or contract. 3. The measurements indicated are supplied for guidance only and as such must be considered incorrect. Potential buyers are advised to recheck measurements before committing to any expense. 4. We have not tested any apparatus, equipment, fixtures, fittings or services and it is in the buyers interest to check the working condition of any appliances.

Connells Residential is registered in England and Wales under company number 1489613, Registered Office is Cumbria House, 16-20 Hockliffe Street, Leighton Buzzard, Bedfordshire, LU7 1GN. VAT Registration Number is 500 2481 05.

see all our properties at [www.connells.co.uk](http://www.connells.co.uk) | [www.rightmove.co.uk](http://www.rightmove.co.uk) | [www.zoopla.co.uk](http://www.zoopla.co.uk)