

for sale

offers in excess of **£525,000**



The Old Stables Roman Road Aldington Ashford TN25 7DS

Three Bedroom Detached House -
Stunning Views Across the Kent
Countryside - A Wealth of Period Features
including Log Burner - Recently Fitted
Kitchen - Driveway & Detached Garage -
Well Presented Throughout - Located in the
Sought After Village Aldington - Close to
Primary School, Park & Local Shop



The Old Stables Roman Road Aldington Ashford TN25 7DS

Agents Note

'There is a easement on the title, please enquire with the Branch'

Agents Note

'Heating to the property is served by LPG bottled gas. Please contact the Branch for more details'

Agents Note

'The property is a non-standard construction - Timber Framed, please speak with your conveyancer'

Entrance Hall

Lounge

12' x 13' 7" (3.66m x 4.14m)

Kitchen/Diner

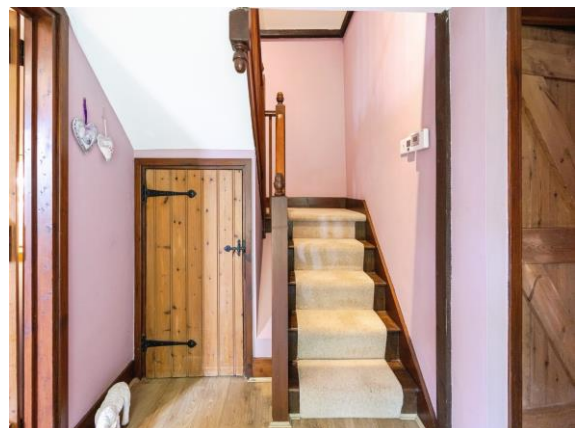
7' 9" x 13' 4" (2.36m x 4.06m)

Bedroom 3 / Dining Room

8' 9" x 13' 9" (2.67m x 4.19m)

En-Suite

Bathroom



First Floor

Landing

Bedroom 1
19' 8" x 12' 6" (5.99m x 3.81m)

Bedroom 2
14' 2" x 12' 4" (4.32m x 3.76m)

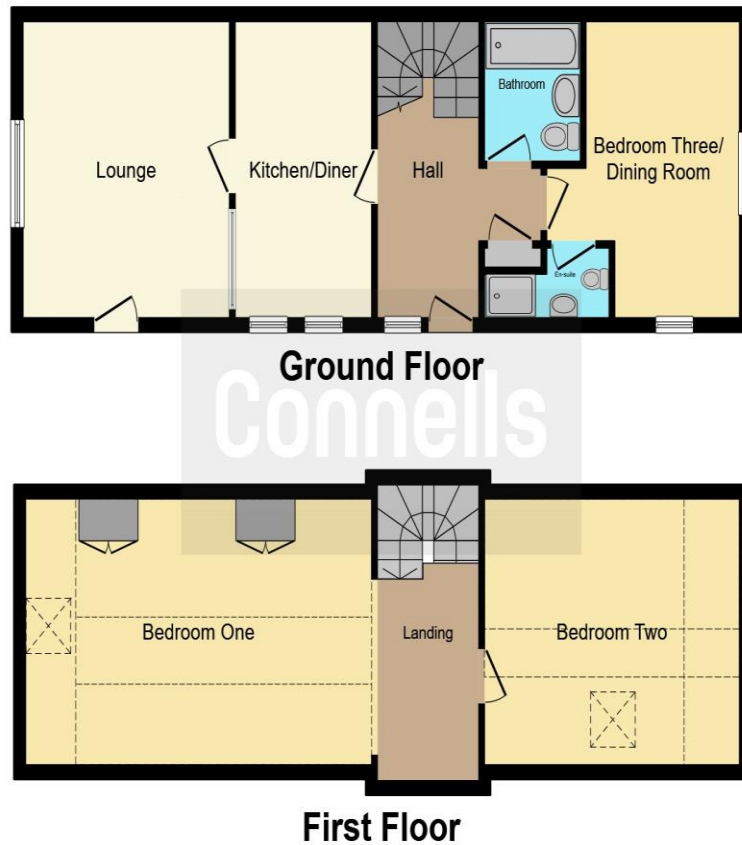
Outside

Driveway

Detached Garage

Rear Garden





This floor plan is for illustrative purposes only. It is not drawn to scale. Any measurements, floor areas (including any total floor area), openings and orientation are approximate. No details are guaranteed, they cannot be relied upon for any purpose and they do not form part of any agreement. No liability is taken for any error, omission or misstatement. A party must rely upon its own inspection(s). Powered by www.focalagent.com

To view this property please contact Connells on

T 01233 502020
E parkfarm@connells.co.uk

Unit 3 Moatfield Meadow Kingsnorth
 ASHFORD TN23 3LU

Property Ref: PFM406166 - 0007

Tenure: Freehold EPC Rating: Awaited

Council Tax Band: E

view this property online connells.co.uk/Property/PFM406166



1. MONEY LAUNDERING REGULATIONS Intending purchasers will be asked to produce identification documentation at a later stage and we would ask for your co-operation in order that there will be no delay in agreeing the sale. 2. These particulars do not constitute part or all of an offer or contract. 3. The measurements indicated are supplied for guidance only and as such must be considered incorrect. Potential buyers are advised to recheck measurements before committing to any expense. 4. We have not tested any apparatus, equipment, fixtures, fittings or services and it is in the buyers interest to check the working condition of any appliances.

Connells Residential is registered in England and Wales under company number 1489613, Registered Office is Cumbria House, 16-20 Hockliffe Street, Leighton Buzzard, Bedfordshire, LU7 1GN. VAT Registration Number is 500 2481 05.

see all our properties at www.connells.co.uk | www.rightmove.co.uk | www.zoopla.co.uk