

MULLEIN

An exceptional family home featuring a classic combination of pale grey weatherboarding and brick, the Mullein is a five-bedroom, three-storey property.

234 sq m (2,519 sq ft)

CHILMINGTON
RISE
KENT

ASHFORD KENT TN23 3DN

www.chilmington-rise.co.uk



Connells

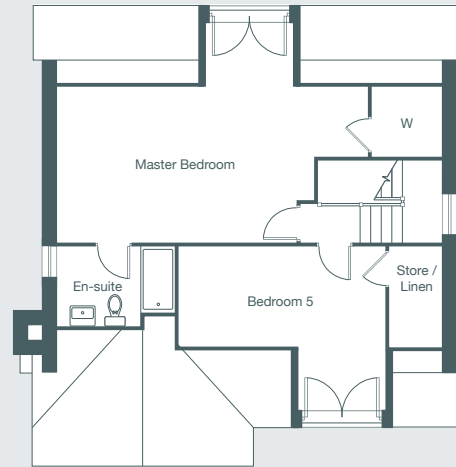
MULLEIN

An exceptional family home featuring a classic combination of pale grey weatherboarding and brick, the Mullein is a five-bedroom, three-storey property.

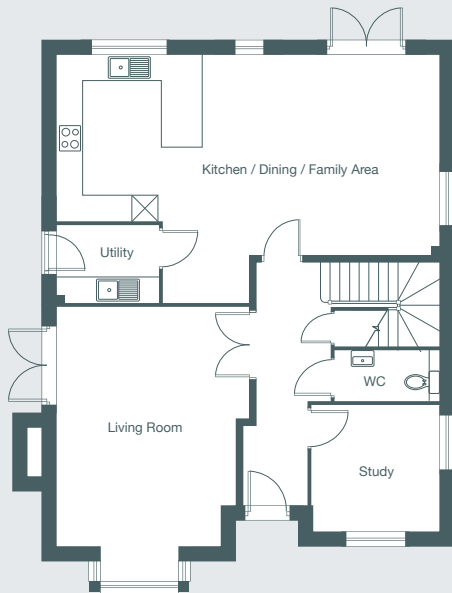
Allocation of garages, carports and off-road parking differs from plot to plot. For more information, please speak to the sales team.

234 sq m (2,519 sq ft)

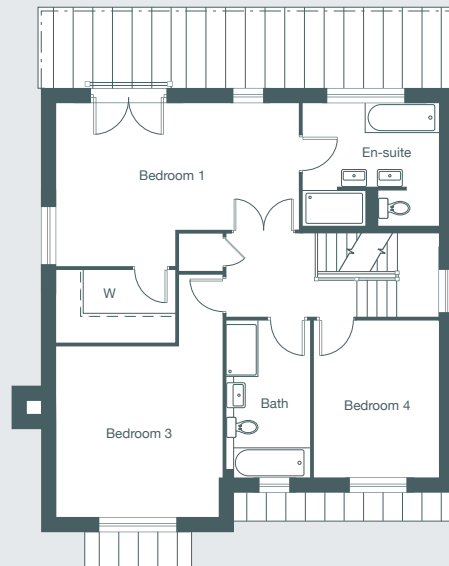
An unusually large property, this lovely family home is packed with impressive features including a ground floor utility room and two bedrooms each with an en-suite bathroom.



Second Floor Plan



Ground Floor Plan



First Floor Plan

GROUND FLOOR

Kitchen / Dining / Family Area

8.85m x 4.65m 29'0" x 15'3"

Living Room

5.51m x 4.17m 18'1" x 13'8"

Study

2.90m x 2.89m 9'6" x 9'6"

Utility

2.38m x 1.78m 7'10" x 5'10"

FIRST FLOOR

Bedroom 1 with en-suite

5.63m x 2.94m 18'6" x 9'8"

Bedroom 3

3.96m x 3.85m 13'0" x 12'8"

Bedroom 4

3.62m x 2.88m 11'11" x 9'5"

SECOND FLOOR

Master Bedroom with en-suite

5.92m x 3.66m 19'5" x 12'0"

Bedroom 5

4.76m x 2.32m 15'7" x 7'7"

Each set of floor plans may be reproduced at a different scale to others within the brochure. Floor plans, dimensions and CGI illustrations are indicative only and can be liable to change during construction. Please check with the sales agent if you require further information.



Sales Suite

Open Daily
Monday to Sunday 10am-5pm

Telephone

01233 622 206
01233 502 020

MULLEIN
Plot 70.