

VERVAIN

A beautifully proportioned home, the Vervain is a lovely, two-bedroom, two-storey property.

79 sq m (853 sq ft)

CHILMINGTON RISE KENT

ASHFORD KENT TN23 3DN

www.chilmington-rise.co.uk



Connells

VERVAIN

A beautifully proportioned home, the Vervain is a lovely, two-bedroom, two-storey property.

Allocation of garages, carports and off-road parking differs from plot to plot. For more information, please speak to the sales team.

79 sq m (853 sq ft)

The ground floor is effectively the day-to-day family area with double doors opening up to the patio and garden. In addition to the cloakroom (complete with WC and sink) there are two good size storage cupboards.

The first floor features an en-suite bedroom complete with a lovely little Juliet balcony to the large rear window. There is a second bedroom, a family bathroom and another storage cupboard.

GROUND FLOOR

Living Area

4.63m x 2.77m 15'2" x 9'1"

Dining Area

3.62m x 1.97m 11'11" x 6'6"

Kitchen

3.72m x 2.35m 12'2" x 7'9"

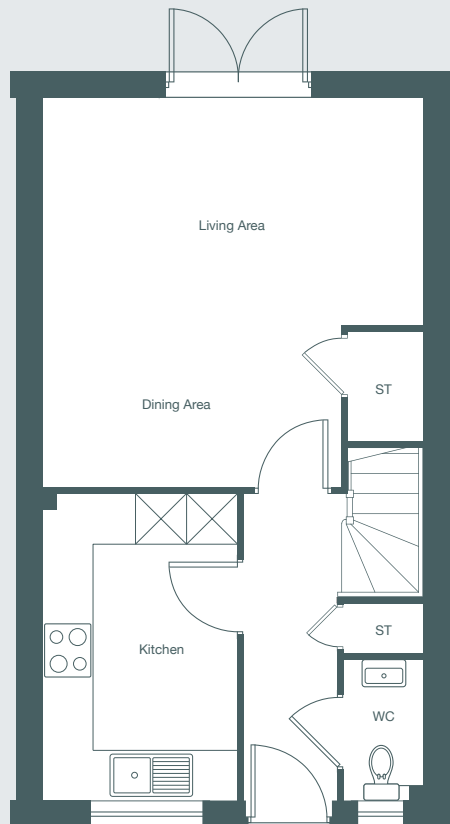
FIRST FLOOR

Master Bedroom with en-suite

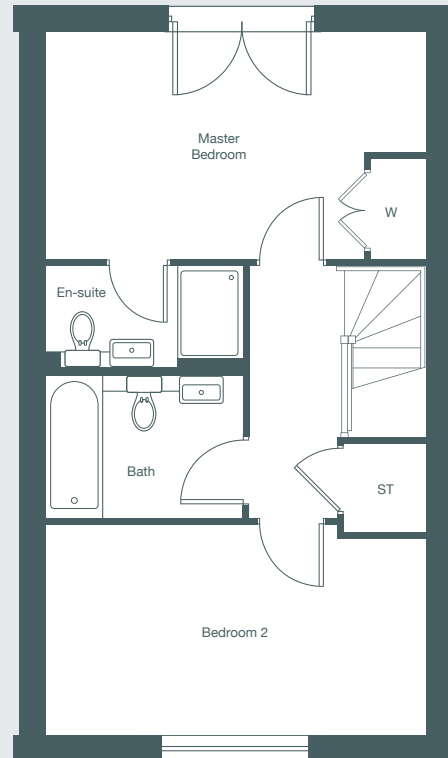
4.63m x 2.79m 15'2" x 9'0"

Bedroom 2

4.63m x 2.55m 15'2" x 8'4"



Ground Floor Plan



First Floor Plan

Each set of floor plans may be reproduced at a different scale to others within the brochure. Floor plans, dimensions and CGI illustrations are indicative only and can be liable to change during construction. Please check with the sales agent if you require further information.



Sales Suite

Open Daily
Monday to Sunday 10am-5pm

Telephone

01233 622 206
01233 502 020

VERVAIN
Plot 79.