



BURNET

A lovely detached family home designed around two distinct wings, the Burnet is an impressive three-bedroom, two-storey property.

104 sq m (1,120 sq ft)

CHILMINGTON
RISE
KENT

ASHFORD KENT TN23 3DN

Connells

www.chilmington-rise.co.uk

BURNET

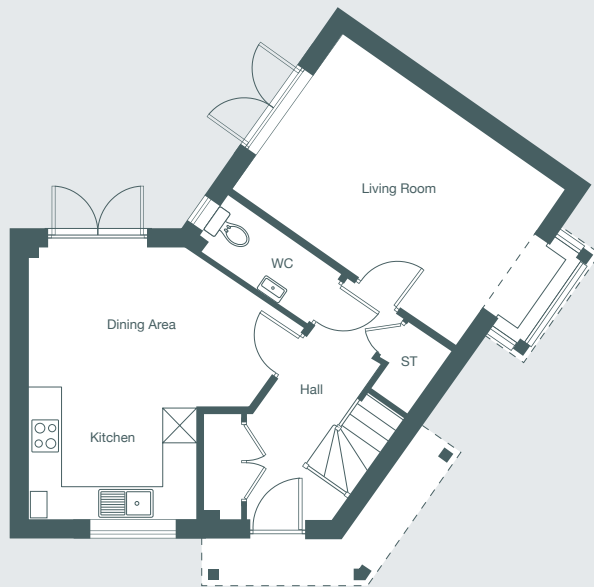
A lovely detached family home designed around two distinct wings, the Burnet is an impressive three-bedroom, two-storey property with a single carport and off-road parking for one car.

104 sq m (1,120 sq ft)

In keeping with other properties on the development, the Burnet features an attractive combination of brick and weatherboarding to all elevations.

On the ground floor you'll discover an impressive hallway complete with cloakroom which leads into the two wings. The kitchen and dining room on one side - the lounge on the other.

The first floor features a master bedroom with an en-suite, two further bedrooms and a family bathroom.



Ground Floor Plan



First Floor Plan

GROUND FLOOR

Living Room

4.96m x 3.46m 16'3" x 11'4"

Kitchen

3.05m x 2.10m 10'0" x 6'11"

Dining Area

4.05m x 2.86m 13'3" x 9'5"

FIRST FLOOR

Master Bedroom with en-suite

3.20m x 3.16m 10'6" x 10'4"

Bedroom 2

4.61m x 2.66m 15'1" x 8'9"

Bedroom 3

3.55m x 2.20m 11'8" x 7'3"

Each set of floor plans may be reproduced at a different scale to others within the brochure. Floor plans, dimensions and CGI illustrations are indicative only and can be liable to change during construction. Please check with the sales agent if you require further information.

Connells

Sales Suite

Open Daily
Monday to Sunday 10am-5pm

Telephone

01233 622 206
01233 502 020

BURNET
Plot 212.