

BRYONY

Available in two styles, all brick and weatherboard cladding, the Bryony is an attractive, three-bedroom, three-storey property.

108 sq m (1,163 sq ft)

CHILMINGTON RISE KENT

ASHFORD KENT TN23 3DN

www.chilmington-rise.co.uk



Connells

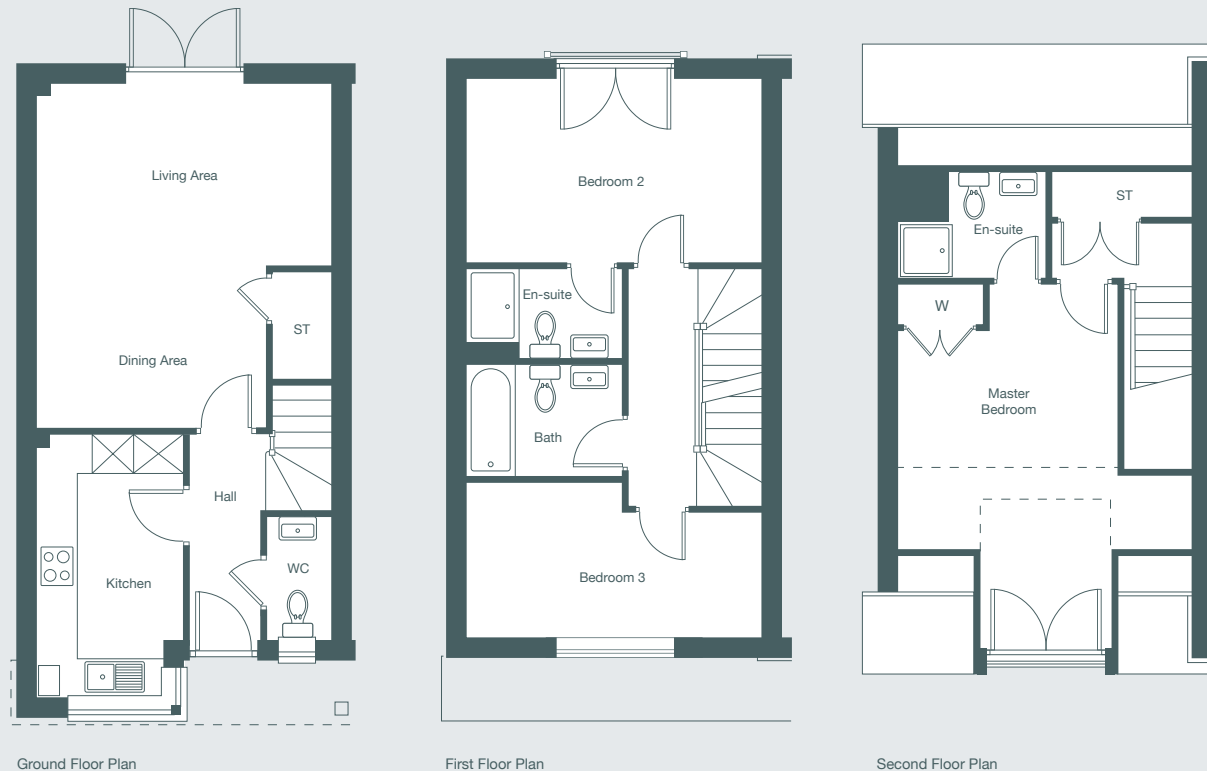
BRYONY

Available in two styles, all brick and weatherboard cladding, the Bryony is an attractive, three-bedroom, three-storey property.

Allocation of garages, carports and off-road parking differs from plot to plot. For more information, please speak to the sales team.

108 sq m (1,163 sq ft)

Traditional with a twist, the Bryony features a distinctly modern aesthetic. The ground floor is designed for family life and entertaining with French doors opening out into the garden from the living room. The first floor has two generous size bedroom, one en-suite and with a Juliet balcony overlooking the garden. The second, top floor, features the stunning en-suite master bedroom with plenty of wardrobe and storage space.



GROUND FLOOR

Living Area

4.50m x 2.79m 14'9" x 9'2"

Dining Area

3.49m x 2.50m 11'6" x 8'3"

Kitchen

4.06m x 2.22m 13'4" x 7'3"

FIRST FLOOR

Bedroom 2 with en-suite

4.50m x 2.80m 14'9" x 9'2"

Bedroom 3

4.50m x 2.36m 14'9" x 7'9"

SECOND FLOOR

Master Bedroom with en-suite

4.07m x 3.34m 13'4" x 10'11"

Each set of floor plans may be reproduced at a different scale to others within the brochure. Floor plans, dimensions and CGI illustrations are indicative only and can be liable to change during construction. Please check with the sales agent if you require further information.

Connells

Sales Suite

Open Daily
Monday to Sunday 10am-5pm

Telephone

01233 622 206
01233 502 020

BRYONY

Plots 75, 76, 205, 208, 214, 215, 223, 228.