

TEASEL

A lovely family home with a number of interesting architectural features, the Teasel is an impressive, three-bedroom, three-storey property.

121 sq m (1,302 sq ft)

CHILMINGTON RISE KENT

ASHFORD KENT TN23 3DN

www.chilmington-rise.co.uk

Connells

TEASEL

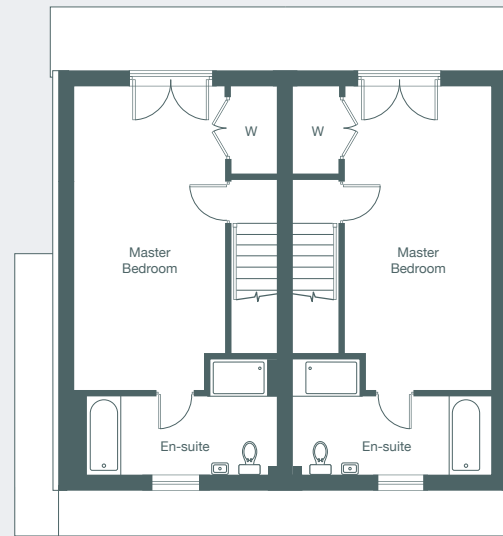
A lovely family home with a number of interesting architectural features, the Teasel is an impressive, three-bedroom, three-storey property.

Allocation of garages, carports and off-road parking differs from plot to plot. For more information, please speak to the sales team.

121 sq m (1,302 sq ft)

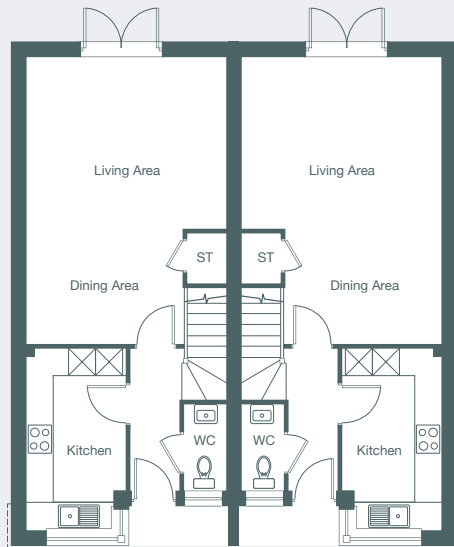
The entrance leads straight into the ground floor hallway. To the left is the kitchen and straight ahead is the generous living/dining area with double doors which open to the patio and garden.

On the first floor you'll find two good sized bedrooms and a family bathroom. The second floor is dedicated to the generous master bedroom and en-suite.



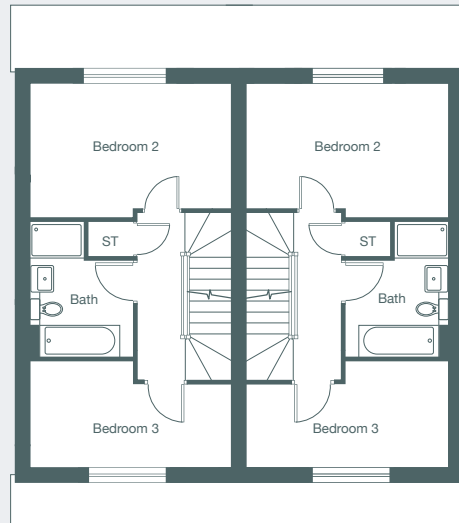
Second Floor Plan Left

Second Floor Plan Right



Ground Floor Plan Left

Ground Floor Plan Right



First Floor Plan Left

First Floor Plan Right

GROUND FLOOR

Living Area

4.50m x 3.94m 14'9" x 12'11"

Dining Area

3.49m x 2.48m 11'6" x 8'2"

Kitchen

4.06m x 2.22m 13'4" x 7'3"

FIRST FLOOR

Bedroom 2

4.50m x 2.98m 14'9" x 9'9"

Bedroom 3

4.50m x 2.36m 14'9" x 7'9"

SECOND FLOOR

Master Bedroom with en-suite

6.75m x 3.34m 22'2" x 10'11"

Each set of floor plans may be reproduced at a different scale to others within the brochure. Floor plans, dimensions and CGI illustrations are indicative only and can be liable to change during construction. Please check with the sales agent if you require further information.



Sales Suite

Open Daily

Monday to Sunday 10am-5pm

Telephone

01233 622 206

01233 502 020

TEASEL

Plots 140, 141, 142, 143, 144, 145, 220, 221.