

for sale

£550,000



Caesar Avenue Kingsnorth Ashford TN23 3PZ

Four Double Bedroom Detached House -
Garage & Driveway - High Specification
Kitchen - Large Lounge with Entertainment
System - Landscaped Rear Garden with
Hot Tub - Fitted Wardrobes to all Bedrooms
- Downstairs WC & Utility Room - En-suite
Shower Room & Bathroom with
Freestanding Bath & Shower



Caesar Avenue Kingsnorth Ashford TN23 3PZ

Entrance Hallway

House has professionally installed / central station monitored security alarm system with CCTV (2 external cameras, 2 internal cameras)

Lounge

13' 7" x 18' 9" (4.14m x 5.71m)

Patio doors leading to garden. In built entertainment system including television, TV unit, two in built ceiling speakers and four wall mounted speakers. Smart lighting

Dining Room

12' 4" x 13' 7" (3.76m x 4.14m)

Bay window, smart lighting

Kitchen

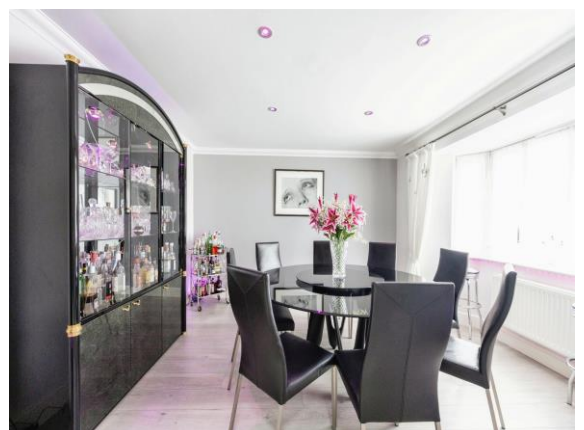
14' 2" x 12' 8" (4.32m x 3.86m)

Recently fitted modern kitchen with Quartz worktops, upstands and flooring. Island with Miele induction hob and downdraft extractor fan with CDA double built under wine cooler. Tower units with 3 Neff ovens (combi-steam, combi microwave, traditional), 2 X Neff Plate warming drawers and Miele coffee machine. Quooker boiling water tap, Harvery's water softener and American fridge freezer. Smart lighting

Utility Room

5' 7" x 6' 9" (1.70m x 2.06m)

Downstairs Wc



First Floor Landing

Bedroom One

16' 7" x 10' 8" (5.05m x 3.25m)

Fitted wardrobes and dressing table, smart lighting

En-Suite Shower Room

Double digital shower, underfloor heating

Bedroom Two

13' 6" x 12' 4" (4.11m x 3.76m)

Fitted wardrobes and bedside units. Smart Lighting

Bedroom Three

18' 8" x 10' 4" (5.69m x 3.15m)

Two fitted wardrobes. Smart lighting

Bedroom Four

10' 8" x 8' 3" (3.25m x 2.51m)

Fitted wardrobes, smart lighting

Bathroom

Freestanding bath, walk in double shower

External

Garage

Driveway

Parking for multiple vehicles

Rear Garden

Landscaped with patio area and artificial grass, Hotspring hot tub, lighting, shed, movement detector lighting





Ground Floor

First Floor

This floor plan is for illustrative purposes only. It is not drawn to scale. Any measurements, floor areas (including any total floor area), openings and orientation are approximate. No details are guaranteed, they cannot be relied upon for any purpose and they do not form part of any agreement. No liability is taken for any error, omission or misstatement. A party must rely upon its own inspection(s). Powered by www.focalagent.com

To view this property please contact Connells on

T 01233 502020
E parkfarm@connells.co.uk

Unit 3 Moatfield Meadow Kingsnorth
 ASHFORD TN23 3LU

Property Ref: PFM405467 - 0005

Tenure: Freehold

EPC Rating: C

view this property online connells.co.uk/Property/PFM405467



1. MONEY LAUNDERING REGULATIONS Intending purchasers will be asked to produce identification documentation at a later stage and we would ask for your co-operation in order that there will be no delay in agreeing the sale. 2. These particulars do not constitute part or all of an offer or contract. 3. The measurements indicated are supplied for guidance only and as such must be considered incorrect. Potential buyers are advised to recheck measurements before committing to any expense. 4. We have not tested any apparatus, equipment, fixtures, fittings or services and it is in the buyers interest to check the working condition of any appliances.

Connells Residential is registered in England and Wales under company number 1489613, Registered Office is Cumbria House, 16-20 Hockliffe Street, Leighton Buzzard, Bedfordshire, LU7 1GN. VAT Registration Number is 500 2481 05.

see all our properties at www.connells.co.uk | www.rightmove.co.uk | www.zoopla.co.uk