

for sale

guide price **£385,000**



Discovery Drive Kingsnorth Ashford TN23 3TR

Guide Price £385,000 - £400,000 - Three Bedroom Detached Town House - No Onward Chain - Balcony off Lounge - Large Kitchen/Diner - Study & Downstairs WC - Views Over Looking Open Fields - Landscaped Rear Garden



Discovery Drive Kingsnorth Ashford TN23 3TR

Ground Floor

Entrance Hall

Study

Cloakroom

Kitchen /Diner



First Floor

Landing

Lounge

12' 9" x 11' 10" (3.89m x 3.61m)

Balcony

Bathroom

Bedroom 2

12' 10" x 9' 5" (3.91m x 2.87m)

Second Floor

Landing

Bedroom 1

15' 6" x 12' 10" (4.72m x 3.91m)

En-Suite

Bedroom 3

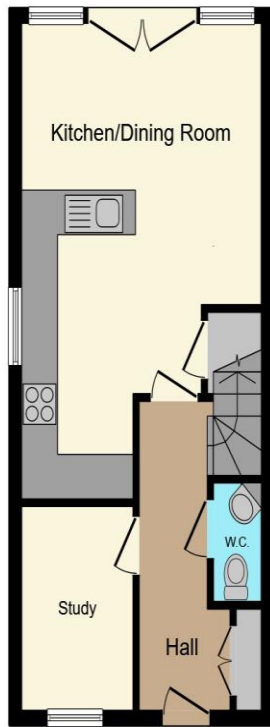
12' 10" x 9' 5" (3.91m x 2.87m)

Outside

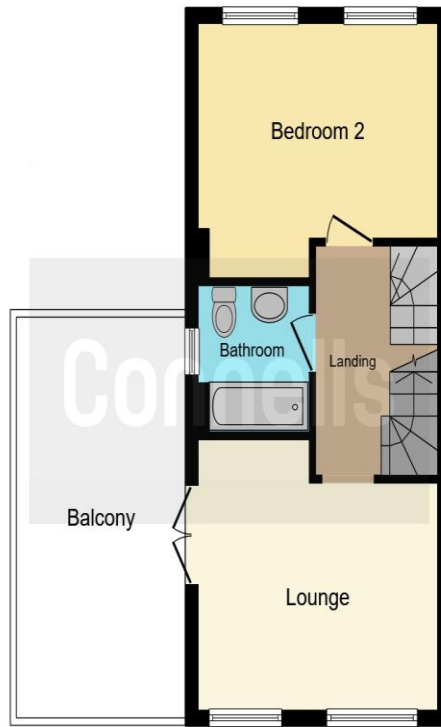
Landscaped Rear Garden

Carport & Driveway

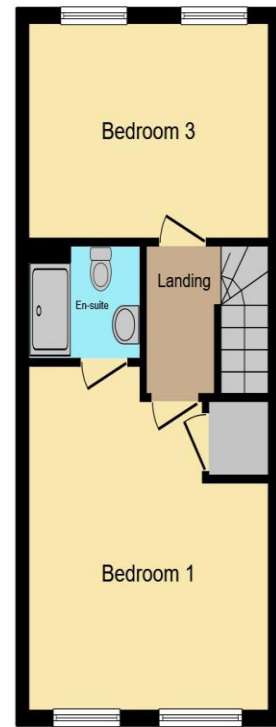




Ground Floor



First Floor



Second Floor

This floor plan is for illustrative purposes only. It is not drawn to scale. Any measurements, floor areas (including any total floor area), openings and orientation are approximate. No details are guaranteed, they cannot be relied upon for any purpose and they do not form part of any agreement. No liability is taken for any error, omission or misstatement. A party must rely upon its own inspection(s). Powered by www.focalagent.com

To view this property please contact Connells on

T 01233 502020
E parkfarm@connells.co.uk

Unit 3 Moatfield Meadow Kingsnorth
 ASHFORD TN23 3LU

Property Ref: PFM405376 - 0002

Tenure: Freehold

EPC Rating: B

view this property online connells.co.uk/Property/PFM405376



1. MONEY LAUNDERING REGULATIONS Intending purchasers will be asked to produce identification documentation at a later stage and we would ask for your co-operation in order that there will be no delay in agreeing the sale. 2. These particulars do not constitute part or all of an offer or contract. 3. The measurements indicated are supplied for guidance only and as such must be considered incorrect. Potential buyers are advised to recheck measurements before committing to any expense. 4. We have not tested any apparatus, equipment, fixtures, fittings or services and it is in the buyers interest to check the working condition of any appliances.

Connells Residential is registered in England and Wales under company number 1489613, Registered Office is Cumbria House, 16-20 Hockliffe Street, Leighton Buzzard, Bedfordshire, LU7 1GN. VAT Registration Number is 500 2481 05.

see all our properties at www.connells.co.uk | www.rightmove.co.uk | www.zoopla.co.uk